



**Build windows faster,  
with more features, for less money.**

Setting our customers apart from their competition.

09.13.2021 Product Catalog



# BUILD WITH THE LEADER

Leading the fenestration industry with over 60 registered patents and a product line with over 4000 window and door hardware parts and accessories, Vision Hardware is quickly becoming the supplier of choice for leading window and door manufacturers worldwide. Headquartered in New York, Vision Hardware has nearly 20 years of experience in product development, manufacturing and quality control. A highly skilled team of in-house engineers can design or duplicate existing parts and also provides custom designs and solutions to meet the OEM needs their customers may have.

Vision Hardware produces the most comprehensive line of high quality window and door operating hardware at competitive prices in a fast and reliable manner, while providing superior customer service and support.

There's more at [www.visionhardware.com](http://www.visionhardware.com)

- Live customer support
- Full featured searchable part inventory
- Product variations and comparisons
- Download CAD drawings
- View your inventoried supply lists
- Create custom brochures and part lists

# VISION PRECISION

Vision's engineers welcome a challenge; they are designing and fabricating parts that the industry wants. It doesn't matter what kind of manufacturing process you use, our levels of quality and productivity, plus a total commitment to innovative solutions are unparalleled in the industry.

- Vision Hardware will custom design components to meet your performance and operation specifications
- Expansive offering of color and plating options
- Proven Vision quality and consistently reliable parts are used by leading manufacturers nationwide



## BALANCE HARDWARE

A complete line of tilt and side load balance systems featuring patented components and accessories. ....5



## MISCELLANEOUS

Vision manufactures well over a thousand hardware components, many are used for special applications, are a common component used in various parts, or were custom designed and engineered for a customer. .... 29



## SCREEN HARDWARE

Vision inventories hundreds of screen components and accessories which include a huge assortment of corners, springs, clips, rollers, and latches. ....43



### CASEMENT HARDWARE

Vision manufactures a complete line of casement hardware. The proven reliability of our patented components and accessories ensuring smooth operation for the life of the window. ...7



### JAMB ADJUSTER

High strength nylon Jamb adjusters are used to adjust and square a double-hung windows.....10



### LOCK KEEPER

Vision manufactures keepers for virtually any window design. Keepers are available for face mount, surface mount, auto locking, hoppers, internal and recessed applications. ....11



### LOCK HARDWARE

Cam and sweep locks are available in standard and forced entry resistant. Locks are available in composite, zinc or hybrid designs with natural or powder coated finishes. ....20



### PATIO DOOR HARDWARE

Patio door components are tested to ensure a lifetime of consistent and reliable use. Ergonomic handles and quality locking components are available in a variety of styles, colors and finishes. ....34



### PIVOT BARS

Pivot Bars (pins) Are a component on the bottom corner of an operable sash in a single or double hung window that allows the sash to be tilted in. ....38



### PULL HANDLES

Pull handles or sash lifters are available in variety of styles, materials, and finishes. ....40



### ROLLERS

Tandem and single roller models with brass and stainless steel components .....41



### TILT LATCHES

Tested to perform consistently and reliably and designed by Vision's in-house product development team. Tilt Latches come in a wide array of styles, finishes and designs that will perfectly complement any window. ....48



### VENT STOPS

Vent Stops restrict the upward movement of the bottom sash while adding a level of security to hung windows.....52



### WEEP HOLE COVERS

Weep hole covers are made of plastics, nylon or superior strength composite material for vinyl or aluminum windows. ....53



### WOCD

Single and Dual Action Window Opening Control Device for before and aftermarket applications. (WOCD) .....55





# It's Nice to Have Options.

## VISION PATIO DOOR HARDWARE

Available in dozens of styles, finishes and configurations  
for any sliding patio door design.

**Our handles can be custom kitted  
and configured to suit your individual  
manufacturing and system requirements.**

Vision offers dozens of single and dual mortise locks with multi-point and anti-slam options, rollers, and patio door accessories in a spectrum of color and plated finishes. And of course we stock to your needs for just in time delivery.

- Classic and contemporary styles
- Available in plated and painted finishes
- Uncompromised strength and security
- Available in die cast zinc, aluminum and composite
- Patented self-adjusting mortise lock available

Visit [www.visionhardware.com](http://www.visionhardware.com) for our complete line of patio door hardware and accessories.



(800) 220-4756 • [WWW.VISIONHARDWARE.COM](http://WWW.VISIONHARDWARE.COM)

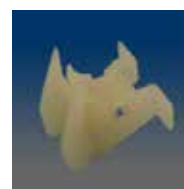
PATENT PENDING ©2019



**MODEL:50621**  
Bottom guide, plastic



**MODEL:50616**  
BOTTOM GUIDE



**MODEL:50615**  
BOTTOM GUIDE



**MODEL:50714**  
BOTTOM GUIDE



**MODEL:50620**  
Bottom guide, plastic



**MODEL:50611**  
Bottom guide, plastic



**MODEL:50721**  
TOP GUIDE



**MODEL:50617**  
BOTTOM GUIDE



**MODEL:50718**  
BOTTOM GUIDE



**MODEL:50613**  
Bottom guide, plastic

**MODEL:TB11-1**  
11-10 TILT BALANCE



**MODEL:2995**  
Spring holder, nylon



**MODEL:2985**  
Balance shoe, for 5/8" channel, rack-in



**MODEL:2982**  
Balance shoe, for 5/8" channel, steel tooth block



**MODEL:2971**  
Balance shoe, for 5/8" channel



**MODEL:2931**  
Balance shoe, for 5/8" channel, green pusher



**MODEL:2970**  
Balance shoe, for 3/8" channel



**MODEL:2986A**  
Balance shoe, for 5/8" channel, drop-in and lock, stretch block is POM



**MODEL:2986C**  
Balance shoe, for 5/8" channel, stretch block is PA6 + fiberglass



**MODEL:2921**  
Balance shoe, for 5/8" channel, blue pusher



**MODEL:2911**  
Balance shoe, for 5/8" channel, red pusher

# Balances



**MODEL:50401**

Tilt balance spacer, TB component, plastic



**MODEL:50210**

Sash cam, plastic



**MODEL:50205**

Sash cam, plastic



**MODEL:50522**

Take-out clip, metal



**MODEL:50552**

Die cast moving pulley system, metal housing+plastic wheel



**MODEL:2999**

Balance shoe, for 5/8" channel, short



**MODEL:2922**

Balance shoe, A for 5/8" channel, red brake pad, squared hole in cam, matched w/ SS bar 6937



**MODEL:50204**

Sash cam, plastic



**MODEL:2988**

Balance shoe, A for 5/8" channel, drop-in and lock



**MODEL:2989**

Balance shoe, for 5/8" channel



**MODEL:29931**

Balance shoe, inverted, for 5/8" channel, metal brake pad



**MODEL:29932**

Balance shoe, inverted, for 5/8" channel, plastic brake pad



**MODEL:50208**

Sash cam, plastic



**MODEL:50603A**

Top guide, plastic



**MODEL:50609**

Bottom guide, plastic



**MODEL:50720A**

Top guide, plastic



**MODEL:60601**

Inverted balance terminal clip, "L"-shaped, metal



**MODEL:60602**

Inverted balance terminal clip, "S"-shaped, metal



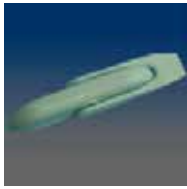
**MODEL:2998**

Balance shoe, for 5/8" channel, long



**MODEL:2980\_B**

Coil Spring Carrier



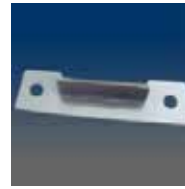
**MODEL:1685**

(# 12-7594R) CASEMENT HANDLE, MULTI POINT LOCK WITH INSTALLATION SCREWS, RIGHT (L-BLUE WHITE)



**MODEL:1698**

Aluminum hinge reinforcement in lengths 11"  $\phi$ , 15"  $\phi$ , 21"  $\phi$ , 27"  $\phi$ , 39"  $\phi$ , 51"  $\phi$  and 57"  $\phi$



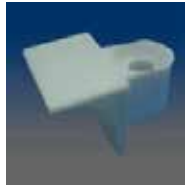
**MODEL:1663**

Snubber, stainless steel



**MODEL:1670**

Operating handle, casement, folding, match with 1641/1642



**MODEL:1611**

L Post, nylon, #12 with Screw



**MODEL:1699**

Aluminum hinge reinforcement, for 1690SL, 14" long



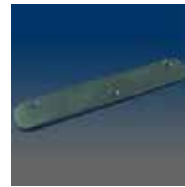
**MODEL:1420**

Zinc handle, for casement



**MODEL:1689**

Cam for locking bar, casement



**MODEL:16913**

Back plate, for door heavy duty hinge, carbon alloy, black E-coat



**MODEL:1665**

Snubber, stainless steel



**MODEL:1664**

Snubber, stainless steel



**MODEL:1614**

Cup washer, steel, white zinc-plated



**MODEL:1613**

Sill cleat, plastic



**MODEL:1687**

Lock slide housing, casement



**MODEL:20132**

Lock handle support plate, steel, powder-coating



**MODEL:1612**

Casement sash snubber, plastic, #8 Screw hole



**MODEL:T1600SS**

Hinge, 10" length, left handed, for standard casement window, stainless steel.



**MODEL:T1603**

Hinge, SS track with powdered arms, 13" length, left or right handed, for standard casement window, mild steel.



**MODEL:T1603SS**

Hinge, 13" length, left or right handed, for standard casement window, stainless steel.



**MODEL:T1619**

Shim for casement locking handle



**MODEL:T16210**

Stud bracket, left or right, casement

# Casement



**MODEL:T16213**

Stud bracket, left or right, casement



**MODEL:T16310SS**

Operator track, casement, stainless steel version also comes in plain 16310 version



**MODEL:T16420**

Traditional dual operator, left or right, with square plastic slider attached



**MODEL:T16431**

Traditional dyad operator, left or right, with round nylon glide shoe attached



**MODEL:T16520**

Folding dual operator base, left or right, with square plastic slider attached; match with folded cover



**MODEL:T16531**

Folding dual operator base, left or right, with round nylon glide shoe attached; match with folded cover, with 45° opening



**MODEL:T16531A**

Folding dual operator base, left or right, with round nylon glide shoe attached; match with folded cover, with 60° opening



**MODEL:T16540**

Folding awning operator base, with square plastic slider attached; match with folded cover



**MODEL:T16540-001**

Operator Shim, works with T16540



**MODEL:T16541**

Folding awning operator base, with round nylon glide shoe attached; match with folded cover



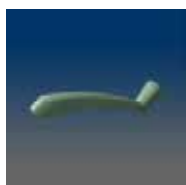
**MODEL:T1663**

Snubber, stainless steel



**MODEL:T1666**

Tie bar hook, left or right handed



**MODEL:T1670**

Operating handle, casement, can not fold



**MODEL:T1675**

Operating handle, casement, can fold



**MODEL:T1677229**

Multi point locking bar, 22.9°, two locking points, non handed



**MODEL:T1677269**

Multi point locking bar, 26.9°, two locking points, non handed



**MODEL:T1677309**

Multi point locking bar, 30.9°, two locking points, non handed



**MODEL:T1677349**

Multi point locking bar, 34.9°, two locking points, non handed



**MODEL:T1677389**

Multi point locking bar, 38.9°, two locking points, non handed



**MODEL:T1677429**

Multi point locking bar, 42.9°, two locking points, non handed



**MODEL:T1677469**

Multi point locking bar, 46.9°, two locking points, non handed





**MODEL:T1677509**

Multi point locking bar, 50.9", two locking points, non handed



**MODEL:T1677549**

Multi point locking bar, 54.9", two locking points, non handed



**MODEL:T1677589**

Multi point locking bar, 58.9", two locking points, non handed



**MODEL:T1680**

Box handle, casement, locking, multi-point, left or right



**MODEL:T1685-86**

Locking handle, casement, multi-point, left or right



**MODEL:T1688A**

Locking handle, casement, multi-point



**MODEL:T1688B**

Locking handle, awning single point



**MODEL:T1688C**

Locking handle, casement, multi-point



**MODEL:T1688D**

Locking handle, casement, multi-point



**MODEL:T1688E**

Locking handle, casement, multi-point



**MODEL:T1693**

Tie bar keeper, casement



**MODEL:T1820**

Limit stop, casement



**MODEL:T8193**

Awning keeper, stainless steel



**MODEL:T1677149**

Multi point locking bar, 14.9", two locking points, non handed



**MODEL:1600SL**

10" adjustable casement hinge, left/right hand; Stainless steel track, heavy gauge mild steel arms and powdered coated, adjustable stainless steel screw to help adjust the sash, 1/2" stack height.



**MODEL:T16014**

Hinge, 14" length, left or right handed, for standard awning window, mild steel.



**MODEL:T1618**

Spline Cap, Protective white plastic spline cap.



**MODEL:1682**

Single-point locking handle assembly



**MODEL:1683**

Single-point Keeper



**MODEL:1610**

Ramp Block



**MODEL:1681-03**

Casement Tie Bar Guide

# Casement



**MODEL:16313SS**

Scissor operator track for awning, stainless steel also comes in plain 16313 version



**MODEL:1600**

Hinge, 10" length, .437" standard thickness, adjustable, left and right handed, for standard casement window



**MODEL:16013W-L**

13" washability casement hinge with SS430 powder coated arm and SS304 track



**MODEL:16013W-R**

13" washability casement hinge with SS430 powder coated arm and SS304 track



**MODEL:16014-L**

14" awning hinge with SS430 powder coated arm and SS304 track



**MODEL:16014-R**

14" awning hinge with SS430 powder coated arm and SS304 track



**MODEL:16440-07**

Connecting plate for operator base

**MODEL:Lin1811**

Lineal

# Jamb Adjusters



**MODEL:1040S**

Nut, ShimTech, plastic, 3/8-16 x .408"



**MODEL:1049**

Nut, ShimTech, 3/8-16 x .408", with flexible barbs, plastic



**MODEL:1041B**

Screw, ShimTech, plastic, 3/8-16 x .75"



**MODEL:1040**

Nut, ShimTech, plastic, 3/8-16 x .59"



**MODEL:1040-41B**

Jamb adjuster, assembly of 1040 & 1041B



**MODEL:8420**

Keeper, sash, surface mount and #8 screw, 2.205" C/L, closed back, material: zinc alloy



**MODEL:8214**

Keeper, sash, face mount, #8 screw, 1" C/L, material: zinc alloy



**MODEL:9350**

Keeper, sash, recessed surface mount, for 600 series hooded lock, #8 screw, 2.079" C/L, material: zinc alloy



**MODEL:8561**

Keeper, sash, surface mount, 2.062" C/L, open back, material: zinc alloy



**MODEL:8183**

Keeper, sash, face mount, #6 screw, 2.062" C/L, slotted holes, match with 3161 lock, material: zinc alloy



**MODEL:9313**

Keeper, sash, surface mount, #6 screw, 2.062" C/L, closed back, match with 9721 sash lock, material: zinc alloy



**MODEL:9357**

Keeper, sash, surface mount, for 600 series hooded lock, #6 screw, 2.062" C/L, closed back, material: zinc alloy



**MODEL:9351**

Keeper, sash, surface mount, "seasure", for 600 series non-hooded lock, #8 screw, 2.062" C/L, material: zinc alloy and Mn



**MODEL:9318**

Keeper, sash, face mount, #6 screw, 1" C/L, material: zinc alloy



**MODEL:9360**

Keeper, sash, surface mount, based on 9353, but with closed back and round holes, 2.062" C/L, material: zinc alloy



**MODEL:8422**

Keeper, sash, surface mount, #6 screw, 2.22" C/L, open back, material: zinc alloy



**MODEL:8227**

Keeper, sash, surface mount, #6 screw, 2.062" C/L, open back, material: zinc alloy



**MODEL:8226**

Keeper, sash, surface mount, #6 screw, 2.175" C/L, open back, match with 3226 / 3286 / 3296 locks, material: zinc alloy



**MODEL:4530**

Composite keeper, 2.062" C/L, rounded holes, surface mount, match with 4310, 4320 locks



**MODEL:9381**

Top Mount Keeper, 2.25" C/L



**MODEL:9385**

Keeper, sash, surface mount, #5 screw, 2.126" C/L, closed back, material: zinc alloy, pronged



**MODEL:8421**

Keeper, sash, face mount, #6 screw, 1" C/L, material: zinc alloy



**MODEL:8261**

Face mount keeper, 2.062" C/L, match with 3261L&R, 3215 locks



**MODEL:9339**

Keeper, sash, face mount, 1.000" C/L, match with 3622, zinc, strength version of 9337, zinc alloy



**MODEL:9354**

Keeper, sash, face mount, for 600 series non-hooded lock, #8 screw, 1" C/L, material: zinc alloy



**MODEL:9370**

Keeper, sash, recessed surface mount, #6 screw, 1.625" C/L, material: zinc alloy

# Keepers



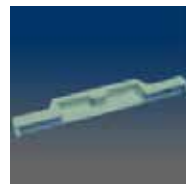
**MODEL:9371**

"Keeper, sash, surface mount, #6 screw, 2.062" C/L, closed back, material: zinc alloy match with locks 9420 and 3420"



**MODEL:9383**

Keeper, sash, surface mount, #5 screw, 2.22" C/L, closed back, material: zinc alloy, pronged



**MODEL:9384**

Keeper, sash, surface mount, #6 screw, 2.25" C/L, closed back, material: zinc alloy, pronged, match with 690 series



**MODEL:9352**

Keeper, sash, recessed surface mount, for 600 series hooded lock, 2.062" C/L, # 6 screw-base and #4 screw-head, material: zinc alloy



**MODEL:9358**

Keeper, sash, surface mount, for 600 series hooded lock, #6 screw, 2.029" C/L, closed back, material: zinc alloy



**MODEL:9334**

Keeper, sash, face mount, two sets of screw holes, match with 9730, material: zinc alloy



**MODEL:9333**

Keeper, sash, face mount, two sets of screw holes, match with 9227, material: zinc alloy



**MODEL:9331**

Keeper, sash, face mount, #8 screw, 1" C/L, match with 611, material: zinc alloy



**MODEL:9321**

Keeper, sash, face mount, #6 screw, 1" C/L, material: zinc alloy



**MODEL:9392**



**MODEL:9388**

Keeper, sash, surface mount, #6 screw, 2.062" C/L, closed back, material: zinc alloy



**MODEL:8427**

Keeper, sash, surface mount



**MODEL:8424**

Keeper, sash, face mount, #5 screw, .433" C/L, material: zinc alloy



**MODEL:8410**

Keeper, sash, surface mount, #6 screw, 2.062" C/L, closed back, material: zinc alloy



**MODEL:8380**

Keeper, sash, surface mount, #6 screw, 2.25" C/L, open back, material: zinc alloy



**MODEL:8296**

Keeper, sash, surface mount, #6 screw, 2.25" C/L, open back, material: zinc alloy



**MODEL:8289**

Keeper, sash, face mount, #5 screw, .77" C/L, material: zinc alloy



**MODEL:8287**

Keeper, sash, surface mount, #6 screw, 2.25" C/L, open back, material: zinc alloy



**MODEL:8224**

Keeper, sash, surface mount, #6 screw, 2.062" C/L, match with 3621



**MODEL:8222**

Keeper, sash, face mount, #6 screw, 1" C/L, match with 3621, material: zinc alloy



**MODEL:8221**

Keeper, sash, face mount, #6 screw, 1" C/L, match with 3621, material: zinc alloy





**MODEL:8216**

Keeper, sash, surface mount, #6 screw, 2.062" C/L, closed back, material: zinc alloy



**MODEL:9316**

Keeper, sash, face mount, #8 screw, 1" C/L, material: zinc alloy



**MODEL:9319**

Keeper, sash, surface mount, 2.062" C/L, open back, match with 9706 sash lock, material: zinc alloy



**MODEL:9314**

Keeper, sash, face mount, #6 screw, 1" C/L, match with 9820 sash lock, material: zinc alloy



**MODEL:9310**

Keeper, sash, surface mount, #8 screw, 2" C/L, closed back, match with 9205 sash lock, material: zinc alloy



**MODEL:8500**

Keeper, sash, surface mount, #5 screw, 2.062" C/L, closed back, material: zinc alloy



**MODEL:8503**

Keeper, sash, surface mount, #6 screw, 2.062" C/L, open back, material: zinc alloy



**MODEL:81811**

Composite sash keeper, surface mount, 2.25" C/L, rounded holes, match with 31811 lock



**MODEL:8206**

Keeper, sash, surface mount, #6 screw, 2.062" C/L, closed back, similar to 8201, material: zinc alloy



**MODEL:8205**

Keeper, sash, surface mount, #6 screw, 2.062" C/L, open back, material: zinc alloy



**MODEL:8212**

Keeper, sash, surface mount, #8 screw, 2.091" C/L, open back, material: zinc alloy



**MODEL:8213**

Keeper, sash, surface mount, #5 screw, 2.062" C/L, open back, material: zinc alloy



**MODEL:8208**

Keeper, sash, face mount, #6 screw, .744" C/L, keep bottom pair of holes of 8202, material: zinc alloy



**MODEL:8423**

Keeper, sash, surface mount, #8 screw, 2.25" C/L, closed back, material: zinc alloy



**MODEL:8425**

Keeper, sash, surface mount, #6 screw, 2.181" C/L, closed back, material: zinc alloy



**MODEL:8426**

Keeper, sash, surface mount, #6 screw, .744" C/L, closed back, material: zinc alloy, match with 3424



**MODEL:8299**

Keeper, sash, face mount, #5 screw, .77" C/L, material: zinc alloy



**MODEL:8381**

Keeper, sash, surface mount, #8 screw, 2.25" C/L, closed back, material: zinc alloy



**MODEL:8226SL**

Keeper, sash, surface mount, 2.169" C/L, open back, material: zinc alloy



**MODEL:8292**

Keeper, sash, face mount, #8 screw, .866" C/L, material: zinc alloy



**MODEL:8291**

Keeper, sash, surface mount, #5 screw, 2.22" C/L, open back, material: zinc alloy

# Keepers



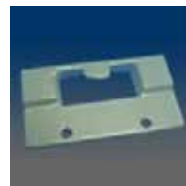
**MODEL:9353**

Keeper, sash, surface mount, for 600 series non-hooded lock, #6 screw, 2.126" C/L, open back, material: zinc alloy



**MODEL:8219**

Keeper, sash, surface mount, #6 screw, 2.062" C/L, open back, material: zinc alloy



**MODEL:8295**

Keeper, sash, face mount, #4 screw, 1" C/L, material: zinc alloy



**MODEL:8293**

SASH KEEPER,FACE MOUNT,1.00" C/L,#6 SCREW(EURO WHITE)



**MODEL:8565**

Keeper, sash, surface mount, #8 screw, 2.062" C/L, closed back, material: zinc alloy



**MODEL:8564**

Keeper, sash, surface mount, #6 screw, 2.062" C/L, open back, material: zinc alloy



**MODEL:8587**

Keeper, sash, face mount, .866" C/L, material: zinc alloy



**MODEL:8563**

Keeper, sash, surface mount, 2.062" C/L, match with 3222S sash lock, material: zinc alloy



**MODEL:8384**

Keeper, sash, surface mount, #6 screw, elongated screw hole based on 8380, open back, match with 3390GK, material: zinc alloy,C/L 2.311"



**MODEL:8526**

Keeper, sash, face mount, #10 screw, .44" C/L, material: zinc alloy



**MODEL:8562**

Keeper, sash, surface mount, #6 screw, 2.062" C/L, open back, material: zinc alloy



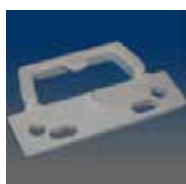
**MODEL:8521**

Keeper, sash, face mount, #6 screw, 1" C/L, material: zinc alloy



**MODEL:8504**

Keeper, sash, surface mount, #6 screw, 2.062" C/L, open back, material: zinc alloy



**MODEL:8525**

Keeper, sash, face mount, 1" C/L, material: zinc alloy



**MODEL:8524**

Keeper, sash, face mount, #10 screw, .43" C/L, material: zinc alloy



**MODEL:8522**

Keeper, sash, face mount, #10 screw, .88" C/L, material: zinc alloy



**MODEL:9322**

Keeper, sash, face mount, #5 screw, 1.87" C/L, material: zinc alloy



**MODEL:9323**

Keeper, sash, face mount, #6 screw, 1.65" C/L, open back, material: zinc alloy



**MODEL:9325**

Keeper, sash, face mount, #5 screw, 1.681" C/L, material: zinc alloy



**MODEL:9335**

Keeper, sash, face mount, match with 9227, material: zinc alloy



**MODEL:9315**

Keeper, sash, face mount, #6 screw, 1" C/L, material: zinc alloy



**MODEL:9311**

Keeper, sash, surface mount, #6 screw, 2.062" C/L, closed back, material: zinc alloy



**MODEL:9312**

Keeper, sash, face mount, #6 screw, 1" C/L, match 9710, material: zinc alloy



**MODEL:8202**

Keeper, sash, face mount, #6 screw, 1" C/L, material: zinc alloy



**MODEL:9327**

Keeper, sash, recessed mount, #8 screw, 1.655" C/L, material: zinc alloy



**MODEL:8187**

Keeper, face mount, 2.244" C/L, match with 9812, material: zinc alloy



**MODEL:9382**

Keeper, sash, surface mount, #6 screw, 2.25" C/L, closed back, material: zinc alloy, match with 9280 lock



**MODEL:9356**

Keeper, sash, surface mount, for non-hooded 600 series hooded lock, #6 screw, 2.062" C/L, closed back, material: zinc alloy



**MODEL:9328**

Keeper, sash, face mount, #5 screw, 1.598" C/L, material: zinc alloy



**MODEL:9326**

Keeper, sash, face mount, #5 screw, 1.556" C/L, material: zinc alloy



**MODEL:4220**

Composite keeper, 2.062" C/L, rounded holes, surface mount, match with 4210



**MODEL:8201**

Keeper, sash, surface mount, #6 screw, 2.062" C/L, match with 3212 lock, closed back, material: zinc alloy



**MODEL:8203**

Keeper, sash, surface mount, #6 screw, 2.062" C/L, closed back, material: zinc alloy



**MODEL:8211**

Keeper, sash, surface mount, #6 screw, 2.062" C/L, open back, material: zinc alloy



**MODEL:8280**

Keeper, sash, surface mount, #6 screw, 2.25" C/L, open back, material: zinc alloy



**MODEL:8262**

Keeper, sash, surface mount, #10 screw, 2.232" C/L, material: zinc alloy



**MODEL:8229**

Keeper, sash, surface mount, #6 screw, 2.11" C/L, closed back, material: zinc alloy



**MODEL:8288**

Keeper, sash, surface mount, #6 screw, 2.25" C/L, with pegs at the bottom, open back, material: zinc alloy



**MODEL:8285**

Keeper, sash, surface mount, #6 screw, 2.25" C/L, open back, material: zinc alloy



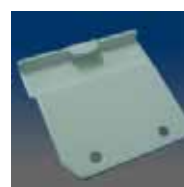
**MODEL:8284**

Keeper, sash, surface mount, #6 screw, 2.25" C/L, closed back, material: zinc alloy



**MODEL:8220**

Keeper, sash, surface mount, #8 screw, 2.213" C/L, open back, material: zinc alloy



**MODEL:8185**

Keeper, face mount, .85" C/L, rounded holes, material SS304

# Keepers



**MODEL:9389**

Keeper, sash, surface mount, #6 screw, 2.25" C/L, open back, material: zinc alloy



**MODEL:8290**

SASH KEEPER,FACE MOUNT,1" C/L,#4 SCREW



**MODEL:9386**

Keeper, sash, surface mount, #6 screw, 2.062" C/L, closed back, pronged, material: zinc alloy, match with 9721 lock



**MODEL:8207**

Keeper, sash, face mount, #6 screw, 1" C/L, taller than 8202, and has different hole position, material: zinc alloy



**MODEL:8209**

Keeper, sash, face mount, #6 screw, .744" C/L, increased the thickness of 8208, material: zinc alloy



**MODEL:8186**

Keeper, sash, face mount, #6 screw, 2.000" C/L, with same appearance as 8183 but has round holes, material: zinc alloy



**MODEL:9337**

Keeper, sash, face mount, 1" C/L, similar with 9336, match with 3620, material: zinc alloy



**MODEL:8223**

Keeper, sash, face mount, #6 screw, 1" C/L, match with 3621, material: zinc alloy



**MODEL:8382**

Keeper, sash, surface mount, #8 screw, 2.25" C/L, closed back, beveled bottom, material: zinc alloy



**MODEL:8283**

Recessed keeper, 2.040" C/L



**MODEL:9359**

Keeper, sash, surface mount, #6 screw, 2.126" C/L, open back, material: zinc alloy, match with both 611SL (non-hooded)



**MODEL:8184**

Keeper, face mount, .846" C/L, rounded holes, material SS304



**MODEL:8200**

Keeper, face mount, .85" C/L



**MODEL:13013**

Keeper of automatic lock 12013, surface mount, 2.062" C/L, #6 screw



**MODEL:9340**

Keeper, sash, surface mount, 2.000" C/L, closed back, #8 screw, similar to 9310, match with lock 4420, zinc alloy



**MODEL:10040**

SCREW



**MODEL:8188**

Keeper, face mount, 1.000" C/L, wall thickness of 0.06", stainless steel, powder coated, similar with 8184, match with 9220S lock



**MODEL:9317**

Face mount keeper, 1" C/L



**MODEL:8210**

Recessed Keeper 1.624" CL



**MODEL:8238**

Top Mount Open Back Keeper, 2.205" C/L



**MODEL:8239**

Top Mount Keeper, 2.185" C/L





**MODEL:8243**

Face Mount Impact Keeper,  
1.575" C/L



**MODEL:8250**

Top Mount Keeper, 1.811" C/L



**MODEL:8253**

Keeper, sash, face mount,  
zinc, match with 3253A-L&R  
lock



**MODEL:8266**

Face Mount Keeper, 0.75" C/L



**MODEL:8267**

Face Mount Keeper, 1.181"  
C/L



**MODEL:8268**

Face Mount Keeper, 2.055"  
C/L



**MODEL:8275**

Recessed Keeper, 2.205" C/L



**MODEL:8277**

Face Mount Keeper, 1.378â€  
C/L



**MODEL:8411**

Closed Back Face Mount  
Keeper, 2.062" C/L



**MODEL:9315A**

Face Mount Keeper  
with slotted hole, 0.749" C/L



**MODEL:9344**

Face Mount Keeper,  
1.15â€C/L



**MODEL:9364**

Face Mount Keeper, 1.418"  
C/L



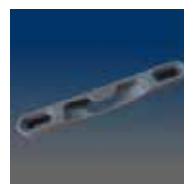
**MODEL:9386A**

Top Mount Keeper, 2.062" C/L



**MODEL:82731**

Top mount keeper, 2.25" C/L,  
0.285" thickness, closed back,



**MODEL:82831**

Recessed Composite Keeper,  
2.141" C/L



**MODEL:8195**

Top mount keeper, 2.062"  
C/L, closed back, slotted holes  
& pronged, match with 617  
lock



**MODEL:8196**

Top mount keeper, 2.250"  
C/L, closed back, slotted holes  
match with 3207, 3208 locks



**MODEL:8197**

Keeper, sash, recessed,  
2.062" C/L, match with 3207,  
3207PRM, 3207SMT, 3208,  
3208PRM, 3208SMT



**MODEL:8198**

Recessed mounted keeper,  
2.250" C/L, match with 3207,  
3208 locks



**MODEL:8217**

Top mount keeper, 2.062" C/L,  
open back



**MODEL:8231**

Top mount keeper, 1.000" C/L

# Keepers



**MODEL:8251**

Top mount keeper, 1.875" C/L, zinc, match with 3252L&R lock



**MODEL:8252**

Face mount keeper, .750" C/L, zinc, match with 3253L&R lock



**MODEL:8263**

Face mount keeper, 0.750" C/L, match with 3262L&R lock



**MODEL:8264**

Face mount keeper, 0.750" C/L, match with 3263L&R lock



**MODEL:8271**

Face mount keeper, 1.375" C/L



**MODEL:8279**



**MODEL:8281**

Face mount keeper, #6 screw used



**MODEL:8286**

Face mount keeper, 2.25" C/L



**MODEL:8527**

Face mount keeper, 1" C/L, match 3226SL



**MODEL:9330**

Top mount keeper, 2.25" C/L, closed back, match with 9730 lock



**MODEL:9338**

Face mount keeper, 1" C/L, similar to 9321



**MODEL:9341**

Face mount keeper, 1.15" C/L, match with 4430 lock



**MODEL:9324A**

Face mount keeper, 1.614" C/L, match with 9820 lock



**MODEL:9342**

Face mount keeper, 0.750" C/L, match with 9720 lock



**MODEL:9362**

Top mount keeper, 2.126" C/L, closed back, elongated hole, match with 600 series lock



**MODEL:9373**

Recessed mounted keeper, 1.622" C/L, match with 9825 lock



**MODEL:9387**

Top mount keeper, 2.25" C/L, open back



**MODEL:9395**

Top mount keeper, 2.062" C/L, open back, match with 9706 lock



**MODEL:82741**

Top mount keeper, 2.25" C/L, 0.375" thickness, closed back



**MODEL:8194**

Top mount keeper, 2.062" C/L, closed back & slotted holes match with 616 lock



**MODEL:81801**

Face mount keeper, 1.004" C/L, round holes, match with 92271A and 9229



**MODEL:9313B**

Keeper with angled screw holes



**MODEL:8232**

Keeper with open back



**MODEL:9345**

Keeper, match with 619 lock



**MODEL:8272**

Keeper with closed back



**MODEL:8255**

Keeper, surface mount, C/L 2.062, #6 screw used, matches with 3253A-L&R



**MODEL:8297**

Keeper with open back and with hook legs



**MODEL:13032**

Keeper that works automatic lock 12032



**MODEL:8256**

Recessed facemount keeper that matches with 3271-L&R or 3273



**MODEL:8254**

Top mounted keeper that is a match with 3252-L&R



**MODEL:13033**



**MODEL:1511**

NYLON KEEPER SKIRT



**MODEL:9313ABG**

Keeper with angled screw holes



**MODEL:9315BG**

Face Mount Keeper with slotted hole, 0.749" C/L



**MODEL:9328DB**

Keeper, sash, face mount, #5 screw, 1.598" C/L, material: zinc alloy



**MODEL:9381VBG**

Top Mount Keeper, 2.25" C/L



**MODEL:9383BW**

Keeper, sash, surface mount, #5 screw, 2.22" C/L, closed back, material: zinc alloy, pronged



**MODEL:9388DBW**

Keeper, sash, surface mount, #6 screw, 2.062" C/L, closed back, material: zinc alloy



**MODEL:9313A**

Sash Keeper



**MODEL:28153**

Impact Tilt Latch Keeper (L/R)



**MODEL:4520\_B**



**MODEL:4524\_B**

# Locks

## Locks



**MODEL:620**

Sash lock, surface mount, 2.062" C/L, .688" set back, #8 screw, hooded, FER compliant, 600 series, FER= Forced Entry Resistance



**MODEL:3390**

Sash lock, surface mount, 2.156" C/L, .72" setback, #10 screw, straight nib, flat handle design



**MODEL:31821**

Composite sweep lock, 2.25" C/L, .47" throw, .43" setback, extended tongue, with glossy finish, round housing



**MODEL:9722**

Sash lock, surface mount



**MODEL:3196**

Sweep lock, 2.25" C/L, .49" throw, #8 screw, .40" setback



**MODEL:606**

Sash lock, surface mount, 1.875" C/L, .688" set back, #8 screw, non-hooded, FER compliant, 600 series, FER= Forced Entry Resistance



**MODEL:31721**

Composite sweep lock, 2.25" C/L, .41" beveled throw, #8 screw, .39" setback, round housing, tongue without nibs, with glossy finish



**MODEL:9218**

Sash lock, surface mount, 2.062" C/L, .438" set back, #6 screw, extended reach cam



**MODEL:3227**

Sash lock, surface mount, 2.062" C/L, .688" setback, #6 screw



**MODEL:3512**

Sash lock, surface mount, 2.062" C/L, .438 setback, #6 screw, straight nib, marked with LOCKED indicator



**MODEL:9817S**

Sash lock, flush mount, 1.63" C/L, .39" setback, #8 screw, with small cam



**MODEL:9706**

Sash lock, surface mount, 1.875" C/L, .688" set back, hooded, low profile, match with 9319 & 9395



**MODEL:3221S**

Sash lock, surface mount, 2.062" C/L, .688" setback, #6 screw, flat handle design, small cam of FS202



**MODEL:3622**

Sash lock, surface mount, 2.062" C/L, .688" set back, #8 screw, regular cam, hooded, match with 9339, strength version of 3620



**MODEL:3261**

Sash Lock for Lock/Latch Combo, works with 7100 tilt latch and 8261 keeper for vinyl window



**MODEL:31911**

Composite sweep lock, round housing, match with 4540, with glossy finish



**MODEL:9730**

Sash lock, surface mount, 2.25" C/L, .39" set back, #6 screw, match with 9330



**MODEL:9820**

Sash lock, flush mount, 1.68" C/L, .575" set back, #8 screw, different lever from 9821



**MODEL:9821**

Sash lock, flush mount, 1.68" C/L, .575" set back, #8 screw, recessed



**MODEL:9721**

Sash lock, surface mount, 2.062" C/L, .688" set back, #6 screw, low profile, non hooded, straight handle, match with 9313



**MODEL:9420**

Sash lock, surface mount, 2.062" C/L, .688" set back, #6 screw, nesting nib





**MODEL:9418**

Sash lock, surface mount, 2.062" C/L, .438" set back, #6 screw, nesting nib, extended reach cam



**MODEL:9485**

Sash lock, surface mount, 1.875" C/L, .688" set back, #6 screw, nesting nib



**MODEL:9410**

Sash lock, surface mount, 2.062" C/L, .438" set back, #6 screw, nesting nib



**MODEL:9210**

Sash lock, surface mount, 2.062" C/L, .438" set back, #6 screw, match with 9381 keeper



**MODEL:9220**

Sash lock, surface mount, 2.062" C/L, .688" set back, #8 screw, match with 9381 keeper



**MODEL:9205R**

Sash lock, surface mount, 1.88" C/L, .688" set back, #8 screw, half round housing



**MODEL:9825**

Sash lock, flush mount, 1.68" C/L, .575" set back, #6 screw, similar to 9821 but without the lip protruding portion of housing



**MODEL:3162**

Sweep lock, 2.25" C/L, .38" beveled throw, #6 screw, .39" setback



**MODEL:3163JD**

Sweep lock, 2.25" C/L, .38" throw, #10 screw, .38" setback, with molded logo "Jordan"



**MODEL:3001**

Small sash lock, .94" C/L, plated with white zinc



**MODEL:3143**

Sweep lock, 1.87" C/L, .28" throw, #8 screw, .31" setback



**MODEL:3151**

Sweep lock, 2.25" C/L, .26" throw, #8 screw, .39" setback, tongue height .055"



**MODEL:3170GK**

Sweep lock, 2.244" C/L, .50" throw, #8 screw, .39" setback, with pad logo "GALKOS"



**MODEL:3210S**

Sash lock, surface mount, 2.062" C/L, .438" setback, .197" throw, #6 screw, flat handle design, small cam



**MODEL:3226SL**

Sash lock, surface mount, 2.062" C/L, .688" setback, #8 screw



**MODEL:3199**

Sweep lock, 2.25" C/L, .46" throw, #6 screw, .39" setback



**MODEL:3206SK**

Sash lock, surface mount, 1.875" C/L, .688" setback, #6 screw, step on housing



**MODEL:3488**

Sash lock, surface mount, 2.25" C/L, .39" setback, #8 screw, nesting nib, flat handle design, extended reach cam



**MODEL:3505**

Sash lock, surface mount, 1.875" C/L, .688" setback, #6 screw, straight nib, marked with LOCKED indicator



**MODEL:605**

Sash lock, surface mount, 1.875" C/L, .688" set back, #8 screw, hooded, FER compliant, 600 series, FER= Forced Entry Resistance



**MODEL:610**

Sash lock, surface mount, 2.062" C/L, .438" set back, #8 screw, hooded, FER compliant, 600 series, FER= Forced Entry Resistance

# Locks



## MODEL:3380

Sash lock, surface mount, 2.25" C/L, .39" setback, #8 screw, straight nib, flat handle design



## MODEL:3391

Sash lock, surface mount, 2.156" C/L, .72" setback, #10 screw. Operating instructions casted in embossed letters on handle.



## MODEL:611

Sash lock, surface mount, 2.062" C/L, .438" set back, #8 screw, non-hooded, FER compliant, 600 series, FER= Forced Entry Resistance



## MODEL:3410

Sash lock, surface mount, 2.062" C/L, .438" setback, #6 screw, nesting nib, flat handle design



## MODEL:680

Sash lock, surface mount, 2.25" C/L, .39" set back, #8 screw, hooded, FER compliant, 600 series, FER= Forced Entry Resistance



## MODEL:3420

Sash lock, surface mount, 2.062" C/L, .688" setback, #6 screw, nesting nib, flat handle design



## MODEL:3424

Sash lock, surface mount, 1.875" C/L, .688" setback, #6 screw, nesting nib



## MODEL:681

Sash lock, surface mount, 2.25" C/L, .39" set back, #8 screw, non-hooded, FER compliant, 600 series, FER= Forced Entry Resistance



## MODEL:683

Sash lock, surface mount, 2.25" C/L, .39" set back, #8 screw, non-hooded, FER compliant, 600 series, FER= Forced Entry Resistance



## MODEL:3480

Sash lock, surface mount, 2.25" C/L, .396" setback, #8 screw, nesting nib, flat handle design



## MODEL:690

Sash lock, surface mount, 2.25" C/L, .838" set back, #6 screw, FER= Forced Entry Resistance



## MODEL:3288

Sash lock, surface mount, 2.25" C/L, .39" setback, #8 screw, extended reach cam



## MODEL:3287

SASH LOCK,SURFACE MOUNT,2.250" C/L,0.438" SET BACK,#8 SCREW,SMALL CAM(EURO WHITE)



## MODEL:690SMT

Sash lock, engraved logo "Simonton", surface mount, 2.25" C/L, .838" set back, #6 screw, FER= Forced Entry Resistance



## MODEL:3290

Sash lock, surface mount, 2.157" C/L, .72" setback, #10 screw, easy-to-read engraved OPEN and LOCK labels



## MODEL:3296

Sash lock, surface mount, 2.043" C/L, .688" setback, #8 screw



## MODEL:3289

Sash lock, surface mount, 2.25" C/L, .39" setback, #8 screw, extended reach cam



## MODEL:3225

Sash lock, surface mount, 1.875" C/L, .688" setback, #6 screw, snap-back lock, unique spring design eliminates exposing the cam in the partially open position



## MODEL:3222

Sash lock, surface mount, 2.062" C/L, .688" setback, #6 screw



## MODEL:3222SK

Sash lock, surface mount, 2.062" C/L, .688" setback, #6 screw, flat handle design



## MODEL:3226

Sash lock, surface mount, 2.062" C/L, .688" setback, #6 screw, match with 8226 keeper



## MODEL:3280

SASH LOCK,SURFACE MOUNT,2.220" C/L,0.390" SET BACK,#10 SCREW(BLUE WHITE)



## MODEL:3213

Sash lock, surface mount, 2.062" C/L, .438" setback, #6 screw, marked with LOCKED indicator



## MODEL:3214

Sash lock, surface mount, 2" C/L, .465" setback, #8 screw, match with 8526 sash keeper



## MODEL:3211

Sash lock, surface mount, 2.062" C/L, .438" setback, #8 screw, snap-back lock, unique spring design eliminates exposing the cam in the partially open position



## MODEL:3220

Sash lock, surface mount, 2.062" C/L, .688" setback, #6 screw



## MODEL:3515TW

Sash lock, surface mount, 2.062" C/L, .438" setback, #6 screw, metal push button handle release like 9205, with logo of "TAYLORS WINDOW"



## MODEL:3512UVW

Sash lock, surface mount, 2.062" C/L, .438 set back, #6 screw, straight nib, marked with LOCKED indicator, 3512 with pad two-color logo "ULTRA-VIEW WINDOWS"



## MODEL:3512HV

Sash lock, surface mount, 2.062" C/L, .438 set back, #6 screw, straight nib, marked with LOCKED indicator, 3512 with pad logo "Home Visions"



## MODEL:3198

Sweep lock, 2.25" C/L, .37" throw, #6 screw, .39" setback



## MODEL:3198TR

Sweep lock, 3198 with pad marking "Traco"



## MODEL:3621

Sash lock, surface mount, 2.062" C/L, .688" set back, #8 screw, regular cam, same appearance as 621



## MODEL:3170

Sweep lock, 2.244" C/L, .50" throw, #8 screw, .39" setback



## MODEL:3164

Sweep lock, 2.244" C/L, .34" beveled throw, #8 screw, .39" setback



## MODEL:4310WV

Composite sash lock, surface mount, round housing, 2.062" C/L, .438" set back, #6 screw, same as 4310 but with WV pad logo



## MODEL:4320

Composite sash lock, surface mount, round housing, 2.062" C/L, .688" set back, #6 screw



## MODEL:32263

Composite Sash Lock, plastic version of 3226SL, 2.062" C/L, .688" setback, housing, handle and cam are made of plastic, match with 8226SL



## MODEL:9828

Sash lock, flush mount, 1.68" C/L, 0.575 set back, #8 screw, w/ beveled cam



## MODEL:9205SB

Sash lock, surface mount, 1.88" C/L, .688" set back, #6 screw, square housing, metal push button handle release



## MODEL:9286

Sash lock, surface mount, 2.25" C/L, .438" set back, #6 screw, match with 9387 keeper



## MODEL:9280

Sash lock, surface mount, 2.25" C/L, .438 set back, #6 screw, marked with LOCKED and UNLOCKED indicator



## MODEL:9228

Sash lock, surface mount, 2.062" C/L, .688" set back, #6 screw, extended reach cam

# Locks



**MODEL:9227**

Sash lock, surface mount, 2.062" C/L, .688" set back, #8 screw used



**MODEL:9217**

Sash lock, surface mount, 2.062" C/L, .438" set back, #8 screw



**MODEL:4210**

Composite Sash Lock, square housing, 2.062" \* 0.438"



**MODEL:31621**

Composite sweep lock, 2.25" C/L, .31" beveled throw, #6 screw, .43" setback, round housing, tongue without nibs, with glossy finish



**MODEL:3522**

Sash lock, surface mount, 2.062" C/L, .688" setback, #6 screw, straight nib, marked with LOCKED indicator



**MODEL:9826**

Sash lock, flush mount, 1.68" C/L, .575" set back, #8 screw, recessed, with straight handle



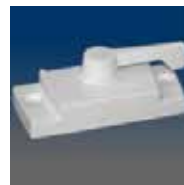
**MODEL:3513**

Sash lock, surface mount, 2.062" C/L, .438 setback, #6 screw, straight nib, marked with LOCKED indicator



**MODEL:3514**

Sash lock, surface mount, 2.062" C/L, .438" setback, #8 screw



**MODEL:3514S**

Sash lock, surface mount, 2.062" C/L, .438" setback, #8 screw, small cam



**MODEL:3522S**

Sash lock, surface mount, 2.062" C/L, .688" set back, #6 screw, 3 degree nib, marked with LOCKED indicator, with small cam



**MODEL:1551**

Sweep lock spacer, steel, yellow chromated



**MODEL:9812**

Sash lock, flush mount, 1.63" C/L, .630" setback, #8 screw, match w/ 8187 keeper



**MODEL:621**

SASH LOCK,SURFACE MOUNT,2.062" C/L,0.688" SET BACK,#8 SCREW, NON-HOODED, FER COMPLIANT,600 SERIES



**MODEL:4310**

Composite Sash Lock, round housing, 2.062" \* 0.438"(941014)



**MODEL:3390GK**

Sash lock, surface mount, 2.156" C/L, .72" setback, #10 screw, straight nib, flat handle design, with engraved logo "Gilkey" on 3390



**MODEL:31774**

Composite sweep lock, 2.25" C/L, .45" throw, #10 screw, .43" setback, round housing, tongue with nibs, with glossy finish



**MODEL:9485SMT**

Sash lock, engraved logo "Simonton", surface mount, 1.875" C/L, .688" set back, #6 screw, nesting nib



**MODEL:9810**

Sash lock, flush mount, 1.75" C/L front hole, #6 screw



**MODEL:9710**

Sash lock, surface mount, 2.062" C/L, .438" set back, #6 screw, low profile, hooded



**MODEL:3418**

Sash lock, 2.062" C/L, .438" setback, #8 screw, nesting nib, flat handle design, extended reach cam



**MODEL:9822**

Sash lock, flush mount, 1.68" C/L, .575" set back, #8 screw



**MODEL:9823**

Sash lock, flush mount, 1.68" C/L, .575" set back, #10 screw



**MODEL:9824**

Sash lock, face mount, 2.17" C/L, #8 screw



**MODEL:31601**

Composite sweep lock, 2.25" C/L, .34" throw, #8 screw, .43" setback, round housing, tongue without nibs, with glossy finish



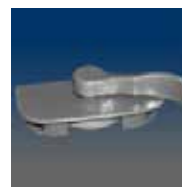
**MODEL:3172HM**

Sweep lock, 2.25" C/L, .47" beveled throw, #8 screw, .39" setback, with engraved logo



**MODEL:31771**

Composite sweep lock, 2.25" C/L, .48" throw, #10 screw, .39" setback, round housing, tongue without nibs, with glossy finish



**MODEL:9811**

Sash lock, flush mount, 1.73" C/L front hole, #8 screw



**MODEL:31806**

Composite sweep lock, 2.25" C/L, .41" throw, .43" setback, thicker squared housing, with glossy finish



**MODEL:3193**

Sweep lock, 2.25" C/L, .37" throw, #10 screw, .40" setback



**MODEL:31624BF**

Composite sweep lock, 2.25" C/L, .31" beveled throw, #6 screw, .43" setback, round housing with "BFS" logo, tongue with nibs, with glossy finish



**MODEL:31811**

Composite sweep lock, 2.25" C/L, .39" throw, .37" setback, special narrow housing, with glossy finish



**MODEL:3205**

SASH LOCK, SURFACE MOUNT, 1.875" C/L, 0.688" SET BACK, #6 SCREW WITH INDICATOR



**MODEL:3620**

Sash lock, surface mount, 2.062" C/L, .688" set back, #8 screw, regular cam, match with 9337, same appearance as 620, hooded



**MODEL:32981**

Composite sash lock, 2.188" C/L, .73" setback, #12 screw, with glossy finish



**MODEL:3218**

Sash lock, surface mount, 2.062" C/L, .438" setback, #6 screw, flat handle design, extended reach cam



**MODEL:3228**

Sash lock, surface mount, 2.062" C/L, .688" setback, #6 screw, flat handle design, extended reach cam



**MODEL:3161**

Sweep lock, 2.25" C/L, .4" throw, #8 screw, .39" setback



**MODEL:4220**

Composite sash lock, surface mount, square housing, 2.062" C/L, .688" set back, #6 screw



**MODEL:9206SB**

SASH LOCK, SURFACE MOUNT, 1.88 C/L, .688 set back, push button handle release



**MODEL:9817**

Sash lock, flush mount, 1.63" C/L, .39" setback, #8 screw, regular cam 9810-03



**MODEL:3159**

Sweep lock, 2.25" C/L, .26" throw, #8 screw, .39" setback, tongue height -0.423"



**MODEL:9485LH**

Sash lock, left, surface mount, 1.875" C/L, .688" set back, #6 screw, nesting nib



# Locks



**MODEL:4420**

Sash lock, surface mount, round housing, 1.875" C/L, .688" set back, #8 screw, zinc, match with 9340



**MODEL:9205RB-REY**

Sash lock, surface mount, 1.88" C/L, .688" set back, #6 screw, half round housing, metal push button handle release, with engraved logo of "REYNOLDS"



**MODEL:9206R.WH.BLU E**

Keeper



**MODEL:619**

Impact Top Mount Lock, FER compliant, 2.062" C/L 0.911"setback



**MODEL:3169**

Sweep lock, 2.244" C/L, .395"setback



**MODEL:3219**

Sash Lock, GT shape, standard version of 3263A, 2.062" C/L, .53" setback



**MODEL:4321**

Composite Top Mount Lock, 2.25" C/L, .600" set back



**MODEL:4430**

Top Mount Lock, round housing, base plate installation



**MODEL:4622**

Composite Top Mount FER sweep lock, 2.062" C/L, .688" set back



**MODEL:9818-L**

Flush Mount Lock, 1.875" C/L, .571" setback



**MODEL:9830**

Flush Mount Lock, 1.875" C/L, .575" set back



**MODEL:9831**

Face Mount Lock, 2.17" C/L



**MODEL:92271**

Composite Lock, 2.25" C/L, .428" setback



**MODEL:3237**

Sash Lock, work with 8253 keeper



**MODEL:3252**

Sash Lock for Lock/Latch Combo, works with 7110 tilt latch and 8251 for wood windows



**MODEL:3253**

Sash Lock for Lock/Latch Combo, works with 7101 tilt latch for vinyl windows



**MODEL:3253A**

Sash Lock for Lock/Latch Combo, works with 7110 tilt latch and 8251 keeper for wood windows



**MODEL:31616**

Composite sweep lock, .35" throw, squared housing, tongue with nibs, with glossy finish



**MODEL:3229**

Sash lock, surface mount



**MODEL:671**

Sash lock, FER compliant, 600 series, FER= Forced Entry Resistance



**MODEL:3262**

Sash Lock for Lock/Latch Combo, egg shape, match with 7101 tilt latch for vinyl windows



**MODEL:3263A**

Sash Lock for Lock/Latch Combo, GT shape, same as 3263 but with 3240-04L lever, works with 7120 tilt latch for vinyl windows



**MODEL:3263**

Sash Lock for Lock/Latch Combo, GT shape, works with 7101 tilt latch for vinyl windows



**MODEL:3271**

Sash Lock for Lock/Latch Combo, recessed



**MODEL:670B**

Sash lock, surface mount, housing with locator pins, FER= Forced Entry Resistance compliant



**MODEL:36702B**

Hybrid recessed GT sash lock



**MODEL:98181B**

Hybrid sash lock, flush mount



**MODEL:670C**

Hybrid sash lock



**MODEL:32801**

Composite sash lock, zinc cam, non-powder coated version



**MODEL:3160**

Sweep lock, 2.25" C/L, .38" throw, .39" setback, tongue length .38", #8 screw used



**MODEL:3310A**

Sash Lock that works with 8253 keeper and is LPC,C/L is 2.055



**MODEL:3192PGT**

Sweep lock



**MODEL:12012**



**MODEL:12013**



**MODEL:12016**



**MODEL:12017**



**MODEL:12021**



**MODEL:12023**



**MODEL:12025**



**MODEL:12029**



**MODEL:12032**



**MODEL:Lin2036**

# Locks



**MODEL:Lin2259**



**MODEL:12040**

Easy access lock, face mount, based on 12017 w/ bigger handle, added string and pull button, .005 pull tab color



**MODEL:12040A**

Easy access lock, face mount, based on 12017 w/ bigger handle, added string and pull button, matching keepers, w/ .605 pull tab color



**MODEL:3212**

Sash Lock



**MODEL:9720**

Sash Lock



**MODEL:3285-1**



**MODEL:3206CRD**

Sash lock, surface mount, 1.875" C/L, .688" setback, #6 screw, step on housing



**MODEL:3225DB**

Sash lock, surface mount, 1.875" C/L, .688" setback, #6 screw, snap-back lock, unique spring design eliminates exposing the cam in the partially open position



**MODEL:3280BG**

SASH LOCK,SURFACE MOUNT,2.220" C/L,0.390" SET BACK,#10 SCREW(BLUE WHITE)



**MODEL:3505IW-L**

Sash lock, surface mount, 1.875" C/L, .688" setback, #6 screw, straight rib, marked with LOCKED indicator



**MODEL:606ET-BG**

Sash lock, surface mount, 1.875" C/L, .688" setback, #8 screw, non-hooded, FER compliant, 600 series, FER= Forced Entry Resistance



**MODEL:680AWA-MEW**

Sash lock, surface mount, 2.25" C/L, .39" setback, #8 screw, hooded, FER compliant, 600 series, FER= Forced Entry Resistance



**MODEL:9210AWV-BG**

Sash lock, surface mount, 2.062" C/L, .438" setback, #6 screw, match with 9381 keeper



**MODEL:9210MEW**

Sash lock, surface mount, 2.062" C/L, .438" setback, #6 screw, match with 9381 keeper



**MODEL:9218MEW**

Sash lock, surface mount, 2.062" C/L, .438" setback, #6 screw, extended reach cam



**MODEL:9280TR**

Sash lock, surface mount, 2.25" C/L, .438 setback, #6 screw, marked with LOCKED and UNLOCKED indicator



**MODEL:9420LM**

Sash lock, surface mount, 2.062" C/L, .688" setback, #6 screw, nesting nib



**MODEL:3239**

Sash Lock, surface mount, 2.248"C/L, 0.386"setback. Match with 8239 keeper



**MODEL:3261A**

Sash Lock for Lock/Latch Combo, 2.062" C/L, .755" setback, left, work with 7120A-L and 8267-1 to consist of Lock/Latch Combo, vinyl window, use 0.80" screw 10108x2pcs, with HOMESPIRE logo On the housing.



**MODEL:3261B**

Sash Lock for Lock/Latch Combo, 2.062" C/L, .755" setback, left, based on 3261A-L by being added a hook to the lever, work with 7100D-L and 8266-1 to consist of Lock/Latch Combo, vinyl window, use 0.75" screw 10135



**MODEL:3215HS**

Sash lock, 3215 with pad logo "HOMESPIRE" Sash lock, 3215 with pad logo "HOMESPIRE"

## MODEL:3215SS

Sash lock, 3215 with pad logo "SAFE SEAL"



## MODEL:3215ST

Sash lock, 3215 with pad logo "STORM TIGHT"



## MODEL:3238

Sash Lock, surface mount, 2.062" C/L, 0.433" setback. Match with 8238 keeper



## MODEL:618

Sash Lock



## MODEL:9818-R

Flush Mount Lock, 1.875" C/L, .571" setback



## MODEL:31901

Sweep Sash Lock



## MODEL:606NDX

Sash lock, surface mount, 1.875" C/L, .688" set back, #8 screw, non-hooded, FER compliant, 600 series, FER= Forced Entry Resistance, 606 with logo "NORANDEX"



## MODEL:611

Sash lock, surface mount, 2.062" C/L, .438" set back, #8 screw, non-hooded, FER compliant, 600 series, FER= Forced Entry Resistance



## MODEL:611SL

Sash lock, surface mount, 2.062" C/L, .438" set back, #8 screw, non-hooded, FER compliant, with an open in housing back that can show lock or open position, 600 series, FER= Forced Entry Resistance



## MODEL:621LH

Sash lock, surface mount, 2.062" C/L, .688" set back, #8 screw, non-hooded, FER compliant, 600 series, left-handed of 621, FER= Forced Entry Resistance



## MODEL:660

Plastic FER loc



## MODEL:672

Sash lock, surface mount, w/ slim handle, 2.062" C/L, .562" set back, Housing material: PA6+30%GF Hybrid FER compliant, 600 series, FER= Forced Entry Resistance



## MODEL:680DJ

680 with pad logo "Danjo", FER= Forced Entry Resistance



## MODEL:680LH

Sash lock, left hand, surface mount, 2.25" C/L, .39" set back, #8 screw, hooded, FER compliant, 600 series, FER= Forced Entry Resistance



## MODEL:690LH

Sash lock, left, surface mount, 2.25" C/L, .838" set back, #6 screw, FER= Forced Entry Resistance



## MODEL:690SMT-LH

Sash lock, left, engraved logo "Simonton", surface mount, 2.25" C/L, .838" set back, #6 screw, FER= Forced Entry Resistance



## MODEL:3266A-LR

## MODEL:3269-L

Sash Lock for Lock/Latch Combo, GT style lock, 2.062" C/L, .500" setback, zinc, left, match with 7104-L tilt latch / 8224 keeper to consist of lock tilt combo for vinyl windows, for vinyl profile, the standard lock is 3292.



## MODEL:3272-LR

Sash Lock for Lock/Latch Combo, recessed, 1.875" C/L, .387" setback, #6 screw 10018\*2pcs, zinc, left, can be used on wood windows, match with 7111-1 tilt latch and 8277-1 keeper



## MODEL:3310A-LR

Sash Lock for Lock/Latch Combo, LPC shape, 2.062" C/L, .688" setback, #8 screw 10137x2pcs, zinc, right, match with 7106-L tilt latch and 8332-1 keeper to consist of lock tilt combo for vinyl windows, for low profile



## MODEL:3310-LR

Sash Lock for Lock/Latch Combo, LPC shape, 2.062" C/L, .688" setback, #8 screw 10137x2pcs, zinc, right, match with 7100HL tilt latch and 8330-1 keeper to consist of lock tilt combo for vinyl windows, for low profile

# Locks



**MODEL:3340-LR**

Sash Lock for Lock/Latch Combo, GT style, 2.062" C/L, .63" setback, zinc, left, match with 7121-L tilt latch and 9356A keeper for vinyl window.



**MODEL:3253B-L**

Sash Lock for Lock/Latch Combo, retro shape, 2.062" C/L, .53" setback, zinc, left, work with 7100H-L and 8331-1 to consist of Lock/Latch Combo for vinyl windows



**MODEL:3261NW-L**

Sash Lock for Lock/Latch Combo, with printing logo, 2.062" C/L, .755" setback, zinc, left, works with 7100L and 8261-1 to consist of Lock/Latch Combo, vinyl window, use screw 10108



**MODEL:3269-R**

Sash Lock for Lock/Latch Combo, GT style lock, 2.062" C/L, .500" setback, zinc, right, t, match with 7104-R tilt latch / 8224 keeper to consist of lock tilt combo for vinyl windows, for a vinyl profile, the standard lock is 3292.



**MODEL:3261-LR**

Sash Lock for Lock/Latch Combo, 2.062" C/L, .755" setback, zinc, left, work with 7100L and 8261-1 to consist of Lock/Latch Combo, vinyl window, use screw 10108



**MODEL:3263B-LR**

Sash Lock for Lock/Latch Combo, GT shape, same as 3263 but with a longer lever but shorter than 3263A lever, 2.062" C/L, .53" setback, #6 screw 10137 2pcs, zinc, left, match with 7100L tilt latch to consist of Lock/Latch Combo for vinyl windows, the matched keeper is 9353.



## Miscellaneous



**MODEL:1514**

Shipping clip for light weight window



**MODEL:1954**

HOLE PLUG



**MODEL:2991E**

Dead lite anchor, nylon, screw #10107 included



**MODEL:5200**

RED CLIP



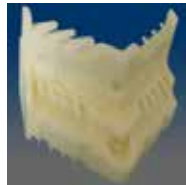
**MODEL:1126**

Corner, used on sash, double hung/ double sliding window, apply on CT 606 profile



**MODEL:1122**

Corner, casement/ awning picture window, apply on CT22 profile



**MODEL:1121**

Corner, used on sash, casement/ awning window, apply on CT21 profile



**MODEL:1119**

Corner, used on sash, apply on sash SV104 of 1100 series window



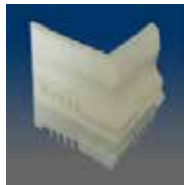
**MODEL:1116**

Corner, used on sash, double hung/ double sliding window, apply on CT06 profile



**MODEL:1114**

Corner, double hung/ picture window, apply on CT504 profile



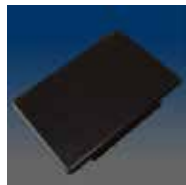
**MODEL:1115**

Corner, double sliding window, apply on CT505 profiles



**MODEL:1113**

Corner, apply on frame SV100 of 1100 series window



**MODEL:24084**

LARGE STAKE POCKET



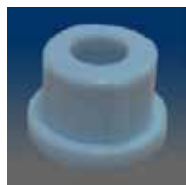
**MODEL:1962**

DECRA-LITE GRID CLIP 5/8



**MODEL:1961**

DECRA-LITE GRID CLIP 3/8



**MODEL:1960**

BUSHING WITH 0.250" THRU HOLE



**MODEL:19541**

Hole plug, plastic, with extended ribs



**MODEL:1424**

Air seal block, PVC



**MODEL:1530**

Fixed panel bracket, steel, powder-coating, with screws included



**MODEL:1615SS**

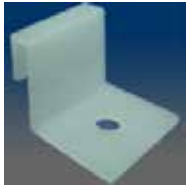
Cup washer, material is 300 series stainless steel



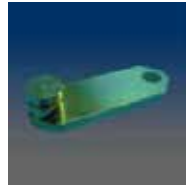
**MODEL:1SS**

SINGLE SKEWERS

# Miscellaneous



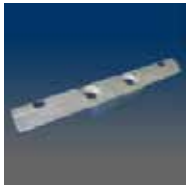
**MODEL:1957**  
Screw-in sash guide, nylon



**MODEL:1419**  
Steel connect plate, yellow chromated, for RV window



**MODEL:1413**  
Pass through clip, zinc, mill finish



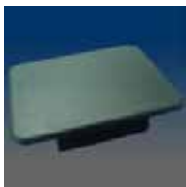
**MODEL:1410**  
Meeting rail anchor, zinc die-cast



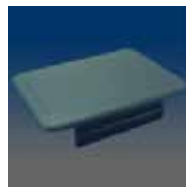
**MODEL:14101**  
Meeting rail anchor, zinc, mill finish



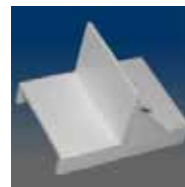
**MODEL:14102**  
Keeper rail adapter, zinc, mill finish



**MODEL:24082**  
MEDIUM STAKE POCKET



**MODEL:24083**  
SMALL STAKE POCKET



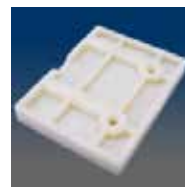
**MODEL:2991**  
Dead lite anchor, nylon



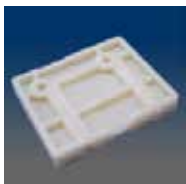
**MODEL:2992**  
TAB GUIDE



**MODEL:2S5**  
DOUBLE SKEWERS



**MODEL:5105**  
SCREW BLOCKS, 2.6"



**MODEL:5104**  
SCREW BLOCKS, 2.4"



**MODEL:5209**  
END CAP, GALVANIZED (44PUR117)



**MODEL:5211**  
GUSSETT PLATE FOR COBALT



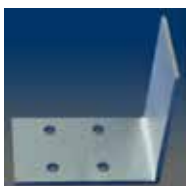
**MODEL:5213**  
INSIDE SILL GUSSET PLATE (07-1270A)



**MODEL:5214**  
OUTSIDE SILL GUSSET PLATE (07-1271A)



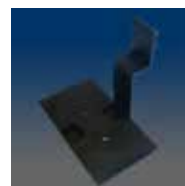
**MODEL:5215**  
Steel plate, .032" thick, galvanized steel



**MODEL:5216**  
(3015005216) PATIO DOOR SHIPPING CLIP



**MODEL:7705**  
Awning clip, with screw installed



**MODEL:1541**  
Fixed panel top bracket, plastic, similar to 1539

# Miscellaneous



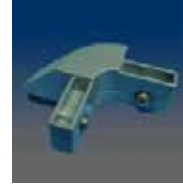
**MODEL:1539**

Fixed panel top bracket,  
plastic



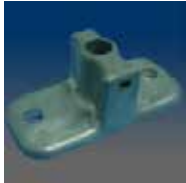
**MODEL:14103**

Mullion connector, width .515",  
zinc, powder-coating, similar  
to 14102



**MODEL:5120**

POWDER COATED CORNER



**MODEL:5100**

ZINC DIE CAST PIN  
HOUSING



**MODEL:5122**

EXTERIOR CORNER FOR  
HARDCOVER



**MODEL:5201**

RED CLIP



**MODEL:1964**

DECRA-LITE GRID CLIP 1"



**MODEL:2502**

Cab clamp assembly, plastic  
boby assembled with bolt  
parts



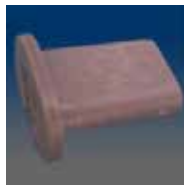
**MODEL:1082**

Pin with screw, aluminum pin  
assembled with SS screw



**MODEL:1018**

Plug, intermediate jamb,  
plastic



**MODEL:1017**

Plug, intermediate jamb,  
plastic



**MODEL:2991B**

Dead lite anchor, nylon



**MODEL:2991C**

Dead lite anchor, nylon



**MODEL:19591**

Meeting rail clip, zinc,  
powdered, left/right



**MODEL:1952**

Installation hole plug, plastic



**MODEL:5106**

Strike plate, stainless steel



**MODEL:1438**

Glazing packer corner, flat,  
width 30mm, thickness 3mm



**MODEL:1437**

Glazing packer corner, flat,  
width 30mm, thickness 5mm



**MODEL:1436**

Glazing packer corner, flat,  
width 30mm, thickness 4mm



**MODEL:2500**

Long rear spring clamp  
assembly, plastic boby  
assembled with bolt parts



**MODEL:5108**

shear block(604-BLACK)

# Patio Door



**MODEL:PD2110**

Handle set, patio door, zinc C loop handle with keyless lock and lever, others are same as PD2010



**MODEL:PD1630**

Secondary mortise lock, with mounting screw 2pcs 10035, installed clip and installed instruction sheet in the kit



**MODEL:PM530**

Keeper, adjusted slot holes, .75" high, yellow dichromate or powdered coating, for PM523, PM524, PM525 and PM526



**MODEL:PD1600**

Handle set, patio door, for US western market, zinc loop handles, locked in middle location, with cylinder and lever



**MODEL:PD3000**

Olympus handle set, patio door, zinc loop handles with keyed lock and lever



**MODEL:PD3020**

Olympus handle set, patio door, zinc loop handles, without keyed lock and lever, dummy set of PD3000 series



**MODEL:PD2020**

Legacy handle set, patio door, zinc C loop handles without keyed lock and lever, dummy set of PD2000 series



**MODEL:PM530A**

Keeper, PM530A with 2pcs H spacers PM532 attached, for PM523, PM524, PM525 and PM526



**MODEL:PD1530**

Handle set, patio door, aluminum, exterior wing and interior loop handles



**MODEL:PD1005**

Keeper, zinc die-casting, powder coated, cast mounting slots, .66" high



**MODEL:PR616C**

Tandem roller, patio door, end-adjustable, yellow dichromate, 1.25" wheel diameter, with aluminum spacer added on PR610C



**MODEL:PM524A**

Mortise, double point, yellow dichromate, with long top plate, 10.992" hole space, side hole



**MODEL:PD2010**

Legacy handle set, patio door, zinc C loop handles with keyless lock and lever



**MODEL:PM400**

Keeper, zinc, yellow dichromate, .685" high



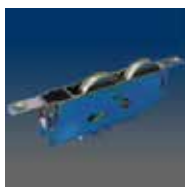
**MODEL:PD1520**

Handle set, patio door, aluminum, exterior wing and interior D loop handles



**MODEL:PM543**

Mortise, double point, narrow width, and square notch.



**MODEL:PR615D**

improved PR616C



**MODEL:PD1510**

Patio door aluminum handle, exterior wing and interior D loop handles with keyless lock



**MODEL:PD1100**

Handle set, patio door, interior wood bar and exterior zinc wing handles with keyless lock



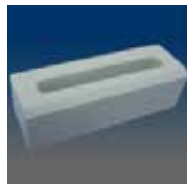
**MODEL:PD2000**

Legacy handle set, patio door, zinc C loop handles with keyed lock and lever



**MODEL:PC011C**

Keyset, similarly keyed, bright chromed cylinder head, total length without finished head is 2.2795", used for PD2000



**MODEL:PB011**

Bumper, rubber, molded rectangular, 3.5" long



**MODEL:PM463**

Keeper, aluminum, extruded, .675" high, for double point mortise



**MODEL:PR612C**

Tandem roller, patio door, end-adjustable, yellow dichromate, 1.25" wheel diameter, .69" housing width, with support-foot and support-top plate



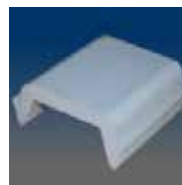
**MODEL:PR611C**

Tandem roller, patio door, end-adjustable, yellow dichromate, 1.25" wheel diameter, 1.375" washer



**MODEL:PM540**

Mortise, double point, narrow width, square notch, matching with PD1120 lever pin



**MODEL:PB001**

Bumper, rubber, 2" channel



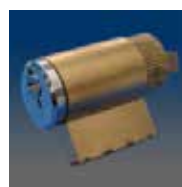
**MODEL:PB002**

Bumper, rubber, 4" channel



**MODEL:PC002C**

Keyset, differently keyed, brass cylinder head, total length without finished head is 2.2795", used for PD2000



**MODEL:PC001E**

Keyset, differently keyed, bright chromed cylinder head, total length without finished head is 1.4646", used for PD1320



**MODEL:PD1000**

Handle set, patio door, wood bar and zinc loop handles with keyless lock



**MODEL:PC011B**

Keyset, differently keyed, brass cylinder head, total length without finished head is 2.2795", used for PD2000



**MODEL:PM500A**

Mortise, single point, yellow dichromate, without faceplate, 3.681" hole space, #6-32 installation screw should be ordered separately



**MODEL:PM411**

Spacer, PE, for PM410 keeper, .09" thick



**MODEL:PM500**

Mortise, single point, yellow dichromate, with short top plate PM503 attached, 4.65" hole space



**MODEL:PM410**

Keeper, zinc yellow dichromate, .44" high



**MODEL:PM200**

Keeper, mill zinc hook



**MODEL:PR602A**

Tandem roller, patio door, end-adjustable, yellow dichromate, 1" wheel diameter



**MODEL:PR600C**

Tandem roller, patio door, side-adjustable, yellow dichromate, 1.25" wheel diameter, .72" housing width



**MODEL:PR500**

**MODEL:PM550**

Keeper, zinc die-cast, .63" high, with plastic bumper attached, for PM540



**MODEL:PM500C**

Mortise, single point, yellow dichromate, with zinc pocket PM501 attached, 5.244" hole space



# Patio Door



**MODEL:PR606C**

Tandem roller, patio door, end-adjustable, yellow dichromate, 1.25" wheel diameter, with installation screw 10065 unattached



**MODEL:PM523D**

Mortise, double point, yellow dichromate, with short top plate, 9.87" hole space, middle hole



**MODEL:PR610C**

Tandem roller, patio door, end-adjustable, yellow dichromate, 1.25" wheel diameter



**MODEL:PR601C**

Tandem roller, patio door, side-adjustable, yellow dichromate, plastic wheel, 1.25" wheel diameter, .72" housing width, new bearing



**MODEL:PR602B**

Tandem roller, patio door, end-adjustable, yellow dichromate, 1.125" wheel diameter, improved wheel groove



**MODEL:PR602C**

Tandem roller, patio door, end-adjustable, yellow dichromate, 1.25" wheel diameter



**MODEL:PR602D**

Tandem roller, patio door, end-adjustable, yellow dichromate, 1.5" wheel diameter



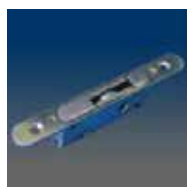
**MODEL:PR604B**

Tandem roller, patio door, end-adjustable, yellow dichromate, 1.125" wheel diameter, side mount only, .69" housing width



**MODEL:PR604C**

Tandem roller, patio door, end-adjustable, yellow dichromate, 1.25" wheel diameter, .69" housing width



**MODEL:PM510**

Mortise, Single Point, yellow dichromate, with short top plate (from PM500), 4.65 inch hole space, pin slot .90 inch from face plate



**MODEL:SR100**

Roller, screen door, single wheel 1.37", zinc plated



**MODEL:PB020**

Bumper, rubber, 2.63" high



**MODEL:PM471**

Keeper, aluminum, .68" high, for single point mortise



**MODEL:PD1120**

Handle set, patio door, interior zinc loop and exterior wing handles with keyed lock



**MODEL:PB100**

Lock, flush, patio door, with rod PB101



**MODEL:PD1300**

Handle set, patio door, molded plastic exterior wing, and extruded aluminum interior handle without lock



**MODEL:PM462**

Keeper, aluminum, extruded, .55" high, for double point mortise



**MODEL:PM473**

Keeper, aluminum, .55" height, 2" length based on PM462 extrusion, for single point mortise



**MODEL:PR2001**

SASHCAP/ROLLER HOUSING BK



**MODEL:PM431SS**

Keeper, stainless steel, formed mounting slots, .669" high



**MODEL:PR613D**

Tandem roller, patio door, end-adjustable, yellow dichromate, 1.5" wheel diameter, with dimples at side body



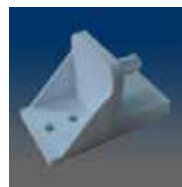
**MODEL:PM460**

Keeper, aluminum, .6" high, for single point mortise



**MODEL:1549**

Patio door footlock



**MODEL:5126**

Patio door clip



**MODEL:PM515**

Mortise, single point, yellow dichromate, w/o top plate,



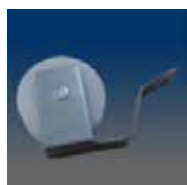
**MODEL:SR103**

Roller,screen door, single wheel, SS410 housing, metal wheel



**MODEL:SR104**

Roller,screen door, single wheel, SS410 housing,plastic wheel



**MODEL:SR105**

Roller,screen door, single wheel,with housing SR103-01, wheel SR104-02 and axle SR105-01



**MODEL:S504A**

Patio door screen lock, composite housing, with short hook (white zinc plated)



**MODEL:PM430**

Keeper, yellow dichromate, .461" high



**MODEL:PM440**

Keeper, yellow dichromate, .118" high



**MODEL:PM450**

Keeper, zinc, .5" high



**MODEL:PM461**

Keeper, aluminum, extruded, .8" high, for double point mortise



**MODEL:PM466**

Keeper, aluminum, extruded, .675" high, for double point mortise



**MODEL:PM500B**

Mortise, single point, yellow dichromate, with long top plate PM502 attached, 5.374" hole space



**MODEL:PM510A**

Mortise, single point, yellow dichromate, without face plate, 3.681" hole space



**MODEL:PD1420**

Handle set, patio door, exterior zinc wing and interior zinc loop handles with lock



**MODEL:PD1700**

Handle set, patio door, for US western market, zinc loop handles, locked in upper location, with cylinder and lever



**MODEL:PD4000**

Handle set, patio door, zinc handles combination of exterior PD1103 and interior PD4020

# Pivot Bars



**MODEL:6941**

Pivot bar assembly, zinc die-cast, with 2820 housing as a bottom



**MODEL:6942**

Pivot bar assembly, zinc die-cast, with 2820 housing as a top



**MODEL:466015**

Sash pivot plate



**MODEL:466048**

Bracket-sash pivot



**MODEL:6943**

Pivot bar assembly, zinc die-cast, with 2820 housing as a top



**MODEL:6935**

Pivot bar, steel, zinc plated, slotted hole version



**MODEL:6980**

Pivot bar, zinc die-cast, slide-in



**MODEL:6970**

Pivot bar, zinc die-cast



**MODEL:6988**

Pivot bar, zinc die-cast, slide-in



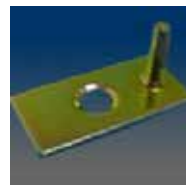
**MODEL:6998**

Pivot bar, zinc die-cast



**MODEL:466016**

Galvanized drive pivot



**MODEL:466032**

Sash pivot plate



**MODEL:6920**

Plain aluminum sash angle



**MODEL:6927**

Pivot bar, steel, zinc plated



**MODEL:6925**

Pivot bar, steel, zinc plated



**MODEL:6924**

Pivot bar, steel, zinc plated



**MODEL:6995**

Pivot bar, zinc die-cast, locking



**MODEL:6997**

Pivot bar, zinc die-cast



**MODEL:6972**

Pivot bar, zinc die-cast



**MODEL:6973**

Pivot bar, zinc die-cast



**MODEL:6974**

Pivot bar, "T"-shaped head, zinc die-cast

# Pivot Bars



**MODEL:6975**



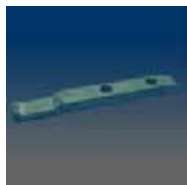
**MODEL:6976**

Pivot bar, "T"-shaped head,  
zinc die-cast



**MODEL:6978**

Pivot bar, "T"-shaped head,  
milled zinc



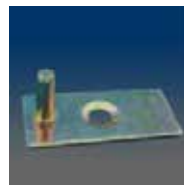
**MODEL:6930**

Pivot bar, zinc die-cast



**MODEL:6932**

Sash pivot plate, steel, yellow  
chromated



**MODEL:6933**

Sash pivot plate, steel, yellow  
chromated



**MODEL:6986**

Pivot bar, zinc die-cast



**MODEL:6985**

Pivot bar, zinc die-cast, slide-  
in



**MODEL:6994**

Pivot bar, zinc die-cast



**MODEL:6991**

Pivot bar, zinc die-cast,  
locking



**MODEL:6979**

Pivot bar, straight head, milled  
zinc



**MODEL:6982**

Pivot bar, zinc die-cast,  
locking



**MODEL:6981**

Pivot bar, zinc die-cast,  
locking



**MODEL:6983**

Pivot bar, zinc die-cast, slide-  
in



**MODEL:69841**

Pivot bar, zinc die-cast,  
locking



**MODEL:6984**

Pivot bar, zinc die-cast,  
locking



**MODEL:69843**

Pivot bar, zinc die-cast,  
locking, only different hole  
location from 6984



**MODEL:6928**

"L" shape bracket, steel,  
powder coating



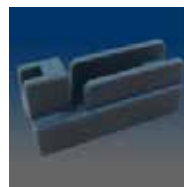
**MODEL:6913**

Pivot bar housing, plastic



**MODEL:6936**

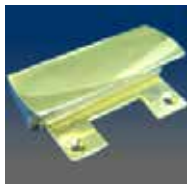
Sash pivot plate, steel, yellow  
chromated, similar to 6932



**MODEL:2825**

Pivot bar bracket

# Pull Handles



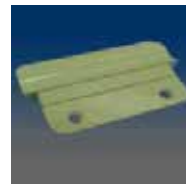
**MODEL:1411**

Sash lift handle, zinc handle with plastic washer



**MODEL:1418**

Sash lift handle, zinc die cast, powdered coat, face mounted



**MODEL:1415**

Handle, sash, flat zinc die-cast



**MODEL:1440**

Pull handle, zinc



**MODEL:14111**

Sash lift handle, plastic handle with plastic washer



**MODEL:1443**

Pull handle, zinc



**MODEL:1423**



**MODEL:1442**

Zinc sash lift handle



**MODEL:1444**

Zinc lift handle, zinc, with a gasket



**MODEL:1445**

Lift Handle

**MODEL:1446**

Lift handle, for patio door

**MODEL:1447**

Sash handle





**MODEL:1164**  
ROLLER,TANDEM,SS  
AXES,BRASS WHEELS



**MODEL:11541**  
Roller, tandem, brass wheel,  
stainless steel axle, shallowest  
notch, 1138-01 housing



**MODEL:1155**  
Roller, tandem, brass wheel,  
stainless steel axle, middle  
notch, 1138-01 housing



**MODEL:1158**  
ROLLER,TANDEM,BRASS  
WHEELS,SS AXEL



**MODEL:1161**  
SINGLE ROLLER/HOUSING  
ASSEMBLY



**MODEL:1141**  
Large roller, single, plastic  
housing, stainless steel  
bearing, radiused wheel,  
located at middle notch



**MODEL:11411**  
Roller housing of 1141, plastic



**MODEL:11382**  
Roller, tandem, stainless steel  
radiused wheel, stainless steel  
axle



**MODEL:11386**  
Roller, tandem, brass wheel,  
brass axle



**MODEL:1132C**  
Roller, tandem, plastic wheel,  
stainless steel axle, housing is  
the same as 1132



**MODEL:1130C**  
Roller, single, solid plastic  
wheel



**MODEL:1130**  
Roller, single, brass wheel,  
brass axle, located at deep  
notch



**MODEL:1136C**  
Roller, tandem, plastic wheel,  
stainless steel axle



**MODEL:1160**  
Roller, single, brass wheel,  
brass axle



**MODEL:11582**  
ROLLER TANDEM BRASS  
WHEELS WITH AXEL



**MODEL:1134**  
Roller, tandem, solid plastic  
wheel



**MODEL:11381**  
Roller, tandem, plastic wheel,  
stainless steel axle



**MODEL:1144**  
Roller, tandem, solid brass  
wheel



**MODEL:1145**  
Roller, tandem, brass wheel,  
stainless steel axle



**MODEL:11384**  
Roller, tandem, plastic wheel,  
stainless steel axle



**MODEL:11385**  
Sash Roller with a brass  
wheel

# Rollers



**MODEL:1147**

Roller, tandem, solid brass wheel



**MODEL:1146**

Roller, tandem, brass wheel, stainless steel axle



**MODEL:1152**

Roller, tandem, plastic wheel, stainless steel axle, middle notch, 1138-01 housing



**MODEL:1132**

Roller, tandem, solid brass wheel



**MODEL:1159**

Roller housing, plastic



**MODEL:11522**

Roller, tandem, plastic wheel, stainless steel axle, deepest notch, 1138-01 housing



**MODEL:1166**

Roller, tandem, plastic wheel 11381-02, stainless steel axle 11381-03, new housing having pegs to fit into 3/16" drilled holes



**MODEL:1165**

Roller, tandem, plastic wheel 11381-02, stainless steel axle 11381-03, housing 1165-01 which is taller than 1132 (same as 1132C except of the housing)



**MODEL:11387**

Sash Roller with a brass wheel



**MODEL:1154**

ROLLER, TANDEM, BRASS WHEEL, STAINLESS STEEL AXLE, MIDDLE NOTCH, 1138-01 HOUSING



**MODEL:1167**

Roller, tandem, plastic wheel 11381-02, stainless steel axle 11381-03, housing 1167-01, similar to 1165



**MODEL:1131C**

Roller, single, plastic wheel, stainless steel axle, single roller version of 1132C



**MODEL:1132D**

Roller, tandem, brass wheel, stainless steel axle



**MODEL:1178**

Roller, tandem, plastic housing, brass wheel, brass axle



**MODEL:1182**

Roller, tandem, brass wheel, plastic housing (PA6)



**MODEL:1183**

Roller, tandem, 11381 SS axle, 11381 POM wheel, 1178 plastic housing



**MODEL:11542**

Roller, tandem, brass wheel, stainless steel axle, deepest notch



**MODEL:1138**

Roller, tandem, plastic radiused wheel, stainless steel axle

# Screen Hardware



**MODEL:10354**

Screen corner, plastic, external, miter, stop, .315 x .535" leg, match 10344 yrdy



**MODEL:1021**

Knife latch, nylon



**MODEL:1029**

Knife latch, nylon, with wider tab than 1021



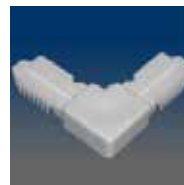
**MODEL:10341**

Screen corner, plastic, flanged, external, .35 x .51" leg



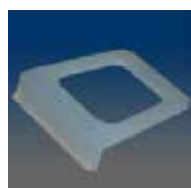
**MODEL:10382**

Screen corner, plastic, external, stop, .27 x .47" leg



**MODEL:10372**

Screen corner, plastic, external, .27 x .53" leg



**MODEL:1020**

Screen pull, nylon



**MODEL:10386**

Screen corner, plastic, external, miter, stop, .28 x .46" leg, match with 10376



**MODEL:10376**

Screen corner, plastic, external, miter, .28 x .32" leg, match with 10386



**MODEL:10374**

Screen corner, plastic, flanged, external, .31 x .49" leg



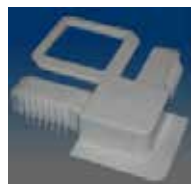
**MODEL:10385**

Screen corner, plastic, external, miter, stop, .22 x .46" leg, match with 10375



**MODEL:10375**

Screen corner, plastic, external, miter, .22 x .32" leg



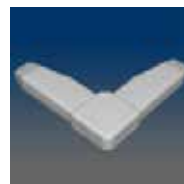
**MODEL:10391**

Screen corner, plastic, external, flanged, with pulling ring, match 10392L/R



**MODEL:1022**

Knife latch, nylon



**MODEL:10343**

Screen corner, plastic, external



**MODEL:1037**

Screen corner, plastic, external, flanged, no tab, .22 x .51" leg, match with 1038L/R



**MODEL:10398**

Screen corner, plastic, external, flanged



**MODEL:1075**

DOG & SPRING SCREEN TRIGGERS



**MODEL:1078**

CASEMENT SCREEN PLUNGER



**MODEL:1963**

END PIN FOR EXTRUDED SCREEN MULLION



**MODEL:0508-0000**

Muntin joiner 5/8"

# Screen Hardware



**MODEL:1070**  
EXPAND .A. SPRING



**MODEL:1068**  
Screen corner, zinc, with adjustable screw, mill finish



**MODEL:1060**  
Screen corner, zinc, internal, with spring attached on the head, mill finish



**MODEL:1057**  
Slide bolt, zinc



**MODEL:1056**  
Screen corner, zinc, internal, with dimples, mill finish



**MODEL:1054**  
Screen corner, zinc, internal, with dimples, mill finish



**MODEL:1043**  
Screen corner, plastic, external, flanged, 120 degree



**MODEL:1042**  
Screen corner, plastic, external, flanged, 60 degree



**MODEL:1316-0000**  
(6015000034)13/16", MUNTIN JOINER



**MODEL:10371**  
Screen corner, plastic, external, .22 x .53" leg



**MODEL:10373**  
Screen corner, plastic, flanged, external, .33 x .51" leg



**MODEL:1011**  
SCREEN CLIP



**MODEL:10383L**  
Screen corner, plastic, external, flanged, tab, left



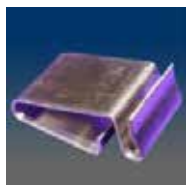
**MODEL:10383R**  
Screen corner, plastic, external, flanged, tab, right



**MODEL:10379**  
Screen corner, plastic, internal, .31 x .49" leg



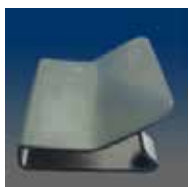
**MODEL:10381**  
Screen corner, plastic, external, stop, .22 x .47" leg



**MODEL:5218**  
Crossbar clip, stainless steel



**MODEL:5217**  
FLAT SPRING, SS



**MODEL:7703**  
Spring clip, stainless steel

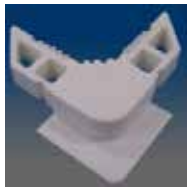


**MODEL:1025**  
Knife latch, reinforced nylon, thinner than 1021



**MODEL:1067**  
Coil spring, white zinc-plated

# Screen Hardware



**MODEL:10384**

Screen corner, plastic,  
external flanged



**MODEL:1019**

Knife Latch, nylon



**MODEL:1013**

Triangular plug, intermediate  
jamb, PVC



**MODEL:10377**

Screen corner, plastic,  
internal, .22 x .32" leg



**MODEL:1010**

Screen pointer/clip, nylon



**MODEL:1026**

Screen pull tab, nylon



**MODEL:1012**

Mark "X" Pin, 1.15" total length



**MODEL:1023**

Screen pull, nylon



**MODEL:1059**

Screen corner, plastic,  
adjustable screw, similar to  
1068



**MODEL:1032**

Screen corner, plastic, internal



**MODEL:1066**

Dog & Spring for screen  
trigger, plastic dog



**MODEL:1012A**

Mark "X" Pin, 1.303" total  
length



**MODEL:1059SS**

Screen corner, plastic,  
adjustable Stainless Steel  
screw, similar to 1068



**MODEL:10273**

Screen plunger lever  
assembly, with aluminum pole  
width .220" and length .962"



**MODEL:10304**

Plastic screen corner



**MODEL:10305**

Plastic screen corner with stop



**MODEL:10306**

Plastic screen corner with  
latch



**MODEL:10307**

Plastic screen corner with  
latch and stop



**MODEL:10351**

Plastic screen corner in left or  
right



**MODEL:1180**

Impact Roller, tandem, SS  
bearing, SS axle, plastic  
housing



**MODEL:1181**

Roller, tandem, brass wheel,  
plastic housing (PA6)





# The EVOLUTION

## OF WINDOW MANUFACTURING

### With the push of a button . . .

Over 8 months of R&D in 2017-2018 and leveraging advances in the award-winning Lock-Tilt Combo system design, Vision Hardware has developed a new system that allows manufacturers to use the same processing to fabricate 4 different variations of lock tilt functionality on a single line.

Build a Good, Better, Best and Impact window system on the same line with the same processing.

**GOOD:** Actually, very good because it is better than most other "Good" window hardware. This is because the processing maintains the integrity of the welded sash corner. Combine that with Vision's submarine style tilt latch, helps the window achieve a DP-50 rating.

**BETTER:** Uses the same processing and also utilizes the award-winning first generation lock tilt combo, an all-in-one lock, and tilt system.

**BEST:** Uses the third generation Lock-Tilt Combo all-in-one lock tilt system with Integral Vent Stop, and WOCD child safety compliance.

**IMPACT:** Meets stringent impact window codes with 4-point multi-point locking.

**The only lock-tilt system ever tested by a certified lab.**

We took the 4th Generation Lock-Tilt-Combo to Architectural Testing Labs in Pennsylvania. The lock was put through a series of cycling and stress tests and passed with flying colors! In fact, the results were so impressive, it greatly exceeded industry standards.



(800) 220-4756 • [WWW.VISIONHARDWARE.COM](http://WWW.VISIONHARDWARE.COM)

PATENT PENDING

# Screen Hardware



**MODEL:1038L**

Screen corner, plastic, flanged, tab, left, match with 1037



**MODEL:1038R**

Screen corner, plastic, flanged, tab, right, match with 1037



**MODEL:1027**

Screen Plunger



**MODEL:1021A**

Knife latch, the PC version of 1021



**MODEL:10274**

Screen plunger lever assembly, with aluminum pole dia. .219" and length 1.225", three components packed in separate bags and put in one carton



**MODEL:10308**

Screen corner, with L shape stop and pull tab



**MODEL:10310**

Screen corner, internal



**MODEL:10311**

Screen corner, internal



**MODEL:10312**

Screen corner, internal



**MODEL:1090A-L**

Latch, glass frame, left, mill finish, without logo



**MODEL:1090A-R**

Latch, glass frame, right, mill finish, without logo



**MODEL:1091A-L**

Latch, screen frame, left, mill finish, without logo



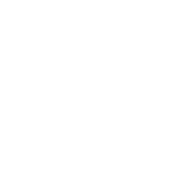
**MODEL:1091A-R**

Latch, screen frame, right, mill finish, without logo



**MODEL:10912-0104**

Pull tab/End cap, packed in same box w/ separate bags, matched with 10912



**MODEL:10913**

Screen latch, plastic plunger+spring+blocking dot assembly



**MODEL:11041**

3-way connector



**MODEL:1106**

Cornier key



**MODEL:1107**

Frame Corner



**MODEL:11091**

Casing corner, 3.5x6x6



**MODEL:1138-12**

1138 plastic wheel and SS axle



**MODEL:11552**

Roller, tandem, brass wheel, axle, middle notch, 1138-01 housing, 11552-01 wheel (smaller than 1155-01 wheel)

# Tilt Latches



**MODEL:2801**

Tilt latch, surface mount, 2.06" hole space, handed



**MODEL:2807**

Tilt latch, surface mount, 1.811" hole space, handed



**MODEL:2812**

Tilt latch, surface mount, 2" hole space, zinc housing, square end tongue



**MODEL:2818**

Tilt latch for heavy window, surface mount, 2.437" hole space, zinc die cast, with plastic knob



**MODEL:2822**

Tilt latch, recessed mount, handed



**MODEL:2819**

Tilt latch for heavy window, surface mount, 2.508" hole space, zinc die cast, with plastic knob



**MODEL:28171**

Keeper with no pin



**MODEL:2806**

Tilt latch, surface mount, 2.02" hole space, handed



**MODEL:2808**

Tilt latch, surface mount, 1.375" hole space, #6 screw, handed



**MODEL:2816**

Tilt latch for heavy window, surface mount, 2.504" hole space, zinc die cast



**MODEL:2821**

Pull button, nylon, for 2822



**MODEL:2800**

Tilt latch, surface mount, 2.33" hole space, handed



**MODEL:2804**

Tilt latch, surface mount, 2.01" hole space, handed



**MODEL:2868**

Tilt latch, surface mount, left or right, match with 2866L and 2867



**MODEL:2867**

Tilt latch cover, plastic, spring attached



**MODEL:2865**

Tilt latch, surface mount, zinc, left or right, match with 2866L and 2867



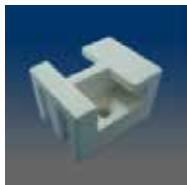
**MODEL:2817**

Keeper match for 2816



**MODEL:2876**

TILT LATCH, DIE CAST W/ SCREW (583138)



**MODEL:28152**

Keeper match for 28151



**MODEL:7120**

Tilt Latch for Lock/Latch Combo, works with 3263A-R/L, for vinyl window



**MODEL:2864**

Tilt latch, surface mount, with a plastic tongue cover, zinc, left or right, attached plastic cover 2867

# Tilt Latches



**MODEL:7382XX**

Tilt latch, flush mount, flat, raised, elliptical or sharkfin button types, has 4 types of tongue offsets A/ B/ C/ D, the multiple flexible tabs on the bottom housing can meet different setback



**MODEL:2797**

Tilt latch, flush mount, round ended housing



**MODEL:2826**

Tilt latch, recessed mount, 2820 housing and new tongue



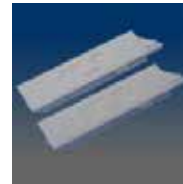
**MODEL:2790**

Tilt latch, flush mount, button styles shown, round ended housing



**MODEL:2791**

Tilt latch, flush mount, ask about button styles, round ended housing, self locking



**MODEL:2680**

Tilt latch, flush mount, square ended housing, inquire about various buttons and offsets



**MODEL:2860**

Tilt latch, flush mount, snap in, ask about button styles, round ended housing



**MODEL:2640**

Tilt latch, flush mount, raised button, inquire about offsets, bottom setback 1"



**MODEL:2694**

Tilt latch, flush mount, elliptical button, tongue offset "C", special round ended housing



**MODEL:2823**

Tilt latch, thin, flush mount



**MODEL:2829**

Tilt latch, flush mount



**MODEL:2886**

Tilt latch, flush mount, zinc housing, similar to 2861L but with elliptical button



**MODEL:7203**

Tilt latch, high button, flush mount



**MODEL:7301**

Tilt latch, flush mount, non-handed, round housing



**MODEL:7302**

Tilt latch, flush mount, non-handed



**MODEL:7381**

Tilt latch, flush mount, ask for button styles, square ended housing, self locking, has 4 types of tongue offsets A/ B/ C/ D; the multiple flexible tabs on the bottom housing can meet different setbacks request.



**MODEL:7382**

Tilt latch, flush mount, ask for button styles, square ended housing, self locking, has 4 types of tongue offsets A/ B/ C/ D; the multiple flexible tabs on the bottom housing can meet different setbacks request.



**MODEL:7391**

Tilt latch, flush mount, ask for button styles, round ended housing, self locking, has 4 types of tongue offsets A/ B/ C/ D; the multiple flexible tabs on the bottom housing can meet different setbacks request.



**MODEL:26931**

Tilt latch, flush mount, elliptical button, special round ended housing with screw locator, matte finish



**MODEL:26932**

Tilt latch, flush mount, elliptical button, special round ended housing with screw locator, powdered finish



**MODEL:28151**

Tilt latch for heavy window, surface mount, 2.244" hole space, zinc die cast

# Tilt Latches



**MODEL:2781**

Tilt latch, flush mount, ask about button styles, square ended housing, self locking



**MODEL:7104**

Tilt Latch for Lock/Latch Combo, works with 327L/R for vinyl window



**MODEL:7110**

Tilt Latch for Lock/Latch Combo, works with 3250L/R and 3252L/R for a wood window



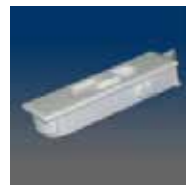
**MODEL:7100**

Tilt Latch for Lock/Latch Combo for vinyl window



**MODEL:2827**

Recessed tilt latch



**MODEL:2698**

Tilt latch, flush mount, square ended housing, left or right handed



**MODEL:7380**

Tilt latch, flush mount, flat, raised or sharkfin button, has 4 types of tongue offsets A/ B/ C/ D; square end and the multiple flexible tabs on the bottom housing can meet different setbacks request.



**MODEL:7390**

Tilt latch, flush mount, flat, raised or sharkfin button, has 4 types of tongue offsets A/ B/ C/ D; rounded end and the multiple flexible tabs on the bottom housing can meet different setbacks request.



**MODEL:2780**

Tilt latch, flush mount, square ended housing. Inquire about various buttons and offsets.



**MODEL:7220**

Tilt latch, raised button, flush mount, round tongue



**MODEL:7111**

Tilt Latch for Lock/Latch Combo, #6 screws used and work with 3272-1-L&R for wood window



**MODEL:2690RC1-R**

TILT LATCH



**MODEL:2693EB-TBA-L**

Tilt Latch



**MODEL:2693EB-TBA-R**

Tilt Latch, Round Housing



**MODEL:27942EB2**

Tilt Latch, Round Housing



**MODEL:2811EWB**

TILT LATCH, SQUARE HOUSING



**MODEL:2831**

Tilt Latch w/ Cam Button Surface Mount (L/R)



**MODEL:7106**

Integrated Lock Tilt (L/R)



**MODEL:7200-LR**

Tilt latch with raised button, flush-mount, left & right, with a square corner, with high design pressure ratings



**MODEL:7380EBS-LR**

Tilt latch, flush-mount, elliptical button, square-ended housing, right. PC housing; having 4 types of tongue offsets AS/ BS/ CS/ DS; scalloped shape tongue, the multiple flexible tabs on the bottom housing can meet different setbacks requests.



**MODEL:7380E-LR**

Tilt latch, flush-mount, elliptical button, square-ended housing, left PC housing; having 4 types of tongue offsets A/ B/ C/ D; the multiple flexible tabs on the bottom housing can meet different setbacks request.





**MODEL:7380FxS-LR**



**MODEL:7380RB-LR**



**MODEL:7380RxS-LR**



**MODEL:PC+PA6**



**MODEL:7380S-LR**



**MODEL:7381EB-LR**



**MODEL:7381EBS-LR**



**MODEL:7381FBS-LR**



**MODEL:7381RB-LR**



**MODEL:7381RBS-LR**



**MODEL:7381SB-LR**



**MODEL:7381SBS-LR**



**MODEL:7390EC-LR**



**MODEL:7390FxS-LR**



**MODEL:7390RBS-LR**



**MODEL:7390R-LR**



**MODEL:7390S-LR**



**MODEL:7390SxS-LR**

# Vent Stops



**MODEL:1760**

Vent stop, fitting slot .285" x 1.875", accommodate multiple vinyl wall thickness



**MODEL:1719**

Vent stop, fitting slot .313" x 1.563", fit 1.7mm to 2.1mm wall thickness.



**MODEL:1720**

Vent stop, fitting slot .189" x 1.063", fit 1.7mm to 2.1mm wall thickness.



**MODEL:1762**

Vent stop, fitting slot .285" x 1.898", accommodate multiple vinyl wall thickness, match extrusion of adjustable thickness



**MODEL:1753**

Vent stop, fitting slot .285" x 1.875", fit 1.7mm to 2.0mm wall thickness



**MODEL:1756**

Vent stop, fitting slot .307" x 2.047", fit 1.5mm to 1.8mm wall thickness



**MODEL:1759**

Vent stop, fitting slot .313" x 1.563", fit 1.7mm to 2.1mm wall thickness



**MODEL:1763**

Vent stop, fitting slot .285" x 1.875", accommodate multiple vinyl wall thickness, with a higher tongue projection



**MODEL:1712**

Vent stop, fitting slot .285" x 1.875", fit 1.7mm to 2.0mm wall thickness.



**MODEL:1718**

Vent stop, fitting slot .285" x 1.875", fit 1.7mm to 2.1mm wall thickness.



**MODEL:1721**

Vent stop, fitting slot .17" x 1.0433", fit 1.7mm to 2.1mm wall thickness.



**MODEL:1723**

Vent stop, fitting slot .17" x 1.063", fit 1.7mm to 2.1mm wall thickness.



**MODEL:1750**

Vent stop, fitting slot .307" x 2.047", fit 1.5mm to 1.8mm wall thickness



**MODEL:1716**

Vent stop, fitting slot .285" x 1.875", fit 1.7mm to 2.0mm wall thickness.



**MODEL:1713**

Vent stop, fitting slot .285" x 1.875", fit 1.7mm to 1.9mm wall thickness.



**MODEL:1714**

Vent stop, fitting slot .285" x 1.875", fit 1.7mm to 2.0mm wall thickness.



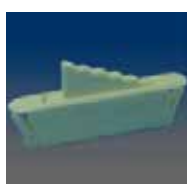
**MODEL:1715**

Vent stop, fitting slot .285" x 1.875", fit 1.3mm to 1.5mm wall thickness.



**MODEL:1730**

Vent stop, fitting slot .177" x 1.11"



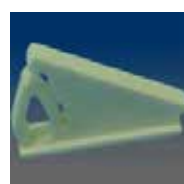
**MODEL:1711**

Vent stop, fitting slot .22" x 1.875", fit 1.7mm to 2.1mm wall thickness.



**MODEL:1754**

Vent stop, fitting slot .285" x 1.875", accommodate multiple vinyl wall thickness



**MODEL:1722**

Vent stop, fitting slot .201" x 1.063", fit 1.7mm to 2.1mm wall thickness.

# Weep Hole Covers



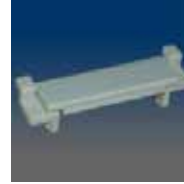
**MODEL:1235**

Weep hole cover, flap with the tab, fitting slot size 1" x .252"



**MODEL:1222**

Weep hole cover, flap, fitting slot size 1.512 x .276"



**MODEL:1227**

Weep hole cover, flap, fitting slot size 1.012" x .177"



**MODEL:1239**

Weep hole cover, flap with the tab, fitting slot size 1.000" x .251"



**MODEL:1224**

Weep hole cover, flap with the tab, fitting slot size 1.287" x .295"



**MODEL:1226**

Weep hole cover, flap, fitting slot size 1.28" x .295"



**MODEL:1241**

Weep hole cover



**MODEL:1237B**

Weep hole cover, flap with tab, fitting slot size 1.476" x .299"



**MODEL:1237**

Weep hole cover, fitting slot size 1.476" x .299"



**MODEL:1230**

Weep hole cover, flap with the tab, fitting slot size 1.024" x .252"



**MODEL:1231**

Weep hole cover, flap with the tab, fitting slot size 1.016" x .260"



**MODEL:1232**

Weep hole cover, flap with the tab, fitting slot size .984" x .252"



**MODEL:1210**

Weep hole cover, flap, works with a slot size 1.181" x .256" but also has posts that center line is 1.882



**MODEL:1220**

Weep hole cover, flap, fitting slot size 1.476" x .252"



**MODEL:1221**

Weep hole cover, flap, fitting slot size 1.122" x .197"



**MODEL:1211**

Weep hole cover, flap, fitting slot size 1.614" x .276" but also has posts that the center line is 2.185



**MODEL:1234**

Weep hole cover, flap with the tab, 1230 body and 1233 tabs, fitting slot size 1.024" x .252"



**MODEL:1238**

Weep hole cover, flap with the tab, fitting slot size 1.016" x .260"



**MODEL:1225**

Weep hole cover, flap, fitting slot size .764" x .252"



**MODEL:1243**

Weep hole cover, simple version, fitting punched slot size 1.713" x .187"



**MODEL:1244**

Weep hole cover, flap with the tab

# Build windows faster, with more features, for less money.



## Introducing the Vision Dual Auto-Lock WOCD Venting Tilt-Latch System A single window component that does it all; Dual Auto-locks, Dual WOCD, and Venting.

### Save Time and Money

Reduce process time and labor associated with standard lock and keeper systems because windows equipped with the Vision Auto-lock Tilt-Latch System do not require standard locks and keepers.

The sash locking mechanism is built into the tilt latch and concealed in the jamb. In fact, so is the WOCD and venting functionality! The Auto-Lock-Tilt-Latch System can be used in vinyl, composite, aluminum, or wood windows all without having to change your existing fabrication!

Compatible with block and tackle or constant force balance systems, the Auto-Lock-Tilt-Latch System installs quickly and easily whether you are using a routed, top mount, or submarine-style tilt latch.

Color-matched to your vinyl lineal, this uniquely simple design will give your customer a clean, very sleek looking window.

### Problem Solved

Adding venting and WOCD to Single-Hung windows normally presents some challenges because the usable surface area of the top fixed lite is limited. The Auto-Lock WOCD Venting Tilt-Latch System solves this problem by concealing the venting, locking and WOCD functionality in the tilt-latch an inside the jamb.

### See it in action

Call (800) 220-4756 and ask for your local sales representative or visit [www.visionhardware.com/autolock-tilt-latch](http://www.visionhardware.com/autolock-tilt-latch) to watch a demonstration or request more information.



**VISION**  
HARDWARE  
*Consistently Reliable*



(800) 220-4756 • [WWW.VISIONHARDWARE.COM](http://www.visionhardware.com)

© 2019 Vision Hardware - Patented and patent pending.





**MODEL:1766**

Window opening control device, zinc, in-slot mount, 2 screw holes, fit in thin slot .323" x 1.878", used in wood window



**MODEL:1773**

Window opening control device, in-slot mount, with a taller tongue than 1761, fit in thin slot .285" x 1.892", fit 1.3mm to 2.1mm wall thickness, used in vinyl window



**MODEL:1779FM**

Spacer, used for 1775FM/ 1775SM/ 1779FM/ 1779SM



**MODEL:1775FM**

Window opening control device for after-market usage, face mount, handed, split version



**MODEL:1761**

Window opening control device, in-slot mount, fit in thin slot .285" x 1.892", fit 1.3mm to 2.1mm wall thickness. used in vinyl window



**MODEL:1779SM**

Window opening control device for after-market usage, side mount, handed, dual action,



**MODEL:1781**

Window opening control device, slot size is 1.875 x .285 x .689



**MODEL:1766-1**

Single Action, Window opening control device, zinc, in-slot mount, 2 screw holes, fit in thin slot .323" x 1.878", used in wood window, with screw 10115 2pcs included



**MODEL:1779FM**

Window opening control device for after-market usage, face mount, handed, dual action, only one needed per window



**MODEL:1775SM**

Window opening control device for after-market usage, side mount



**MODEL:1788**

PROPRIETARY-WOCD not for sale



**MODEL:1789**

PROPRIETARY-WOCD not for sale



**MODEL:1555**

Bracket for 17XX wood



**MODEL:1787**

Window opening control device, with holder for left and right jamb pockets



**MODEL:1794**

Dual action window opening control device(WOCD) version of 1766 with same slot size as 1766 (1.89 x .323 x .650)



**MODEL:1795**

Window opening control device, single action

**MODEL:1793**

Window opening control device, single-action WOCD with balance cover

**MODEL:1458**

Limit control device housing, match with 1789-L/R

# We Have Thousands of SKUs and Unlimited Ways to Improve Your Products

With over 8000 SKU's and patented award-winning products covering more than 40 designs, VISION's massive selection of window and door parts improve products at all price points from high end to the most affordable and everything in-between.



(800) 220-4756 • [www.visionhardware.com](http://www.visionhardware.com)

