

# 2025 Product Catalog

BALANCE HARDWARE | CASEMENT HARDWARE | END RAIL CAPS | HOPPER HARDWARE | JAMB ADJUSTERS | KEEPERS | LOCK HARDWARE

VOLUME 1



**VISION**  
HARDWARE  
*Consistently Reliable*

**Hundreds of Parts  
and Unlimited Ways to Improve Your Products**

(800) 220-4756 • [www.visionhardware.com](http://www.visionhardware.com)

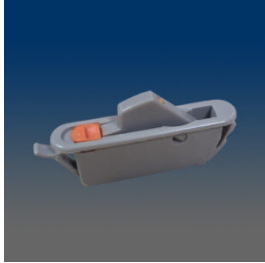
COPYRIGHT © 2025 VISION HARDWARE. ALL RIGHTS RESERVED.  
THESE PRODUCTS MAY BE PROTECTED BY ONE OR MORE VISION PATENTS. PATENT  
INFORMATION CAN BE OBTAINED AT [WWW.VISIONHARDWARE.COM/PATENTS](http://WWW.VISIONHARDWARE.COM/PATENTS)

# WOCD



**1800-LR**

casement WOCD, handed, pat. pending



**1799**

dual action WOCD



**17982**

dual action WOCD



**17981**

dual action WOCD



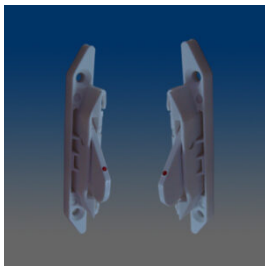
**1798**

dual action WOCD



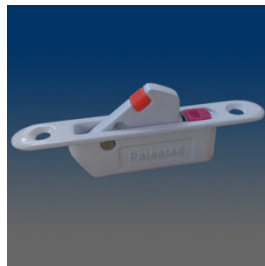
**1796**

single action WOCD



**1795-LR**

single action balance pocket WOCD, handed



**1794**

dual action WOCD, screw mount, zinc



**1793-LR**

single action balance pocket WOCD, handed, fits with balance cover



**1791**

single action WOCD, shallow body



**1789A-L/R**

dual action WOCD, handed



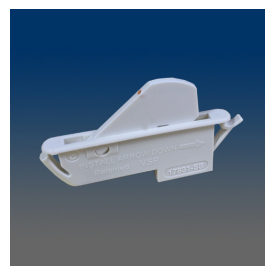
**1788A**

single action WOCD



**1787-LR**

single action balance pocket WOCD, handed



**17831-SB**

single action WOCD, soda blast



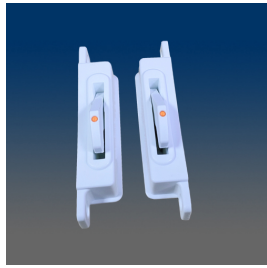
**1783**

single action WOCD



**1782FM-LR**

single action WOCD, handed, sold as paired kit



**1781A\*1433A-SB-LR**

1781A assembled with 1433A WOCD housing, handed, soda blast finish



**1781A**

single action WOCD



**1780FM-LR**

dual action WOCD, zinc, handed, sold as kit L or R



**1779SM-LR**

dual action WOCD, handed, sold as kit L or R



**1779FM-LR**

dual action WOCD, handed, sold as kit L or R



**1775SM-LR**

single action WOCD, handed, sold as paired kit



**1775FM-LR**

single action WOCD, handed, sold as paired kit



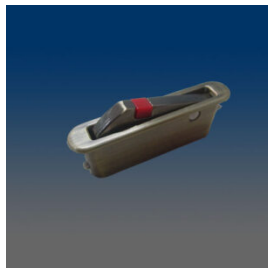
**1773**

single action WOCD, extended tongue



**1766A**

single action WOCD, screw mount, zinc



**1764**

single action WOCD for wood, zinc



**1761B**

single action WOCD, notched barb



**1761A**

single action WOCD



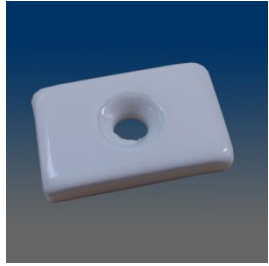
**1740FM-LR**

dual action WOCD, handed, sold as kit L or R



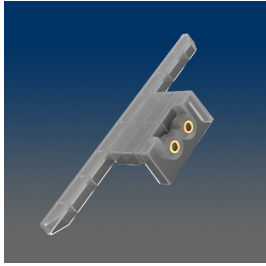
**1555**

balance pocket holder for 0.285" x 1.875" WOCD



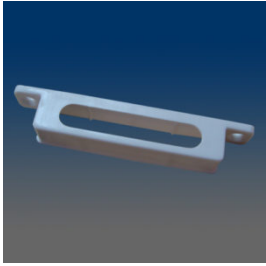
**1553-1**

WOCD strike plate, 1 pc #4 x 0.375" flat head screw included



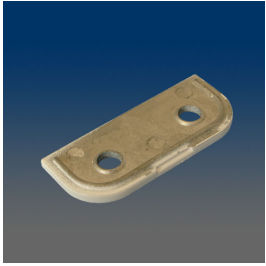
**1508**

drill jig for 1775/79FM installation



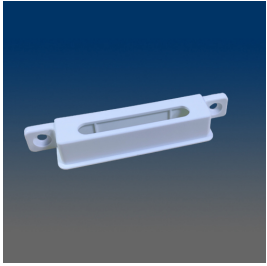
**1458**

WOCD holder, fitting 1788A & 1789A-L/R



**1439**

spacer for 1780FM, zinc



**1433A**

WOCD holder for 1.875" x 0.285" devices



**1433**

WOCD holder for 1.875" x 0.285" devices



**14305**

strike plate, clear plastic



**1428**

spacer, used for 1775FM/ 1775SM/ 1779FM/ 1779SM