

2025 Product Catalog

BALANCE HARDWARE | CASEMENT HARDWARE | END RAIL CAPS | HOPPER HARDWARE | JAMB ADJUSTERS | KEEPERS | LOCK HARDWARE

VOLUME 1



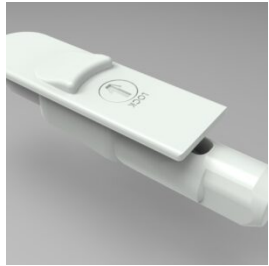
VISION
HARDWARE
Consistently Reliable

**Hundreds of Parts
and Unlimited Ways to Improve Your Products**

(800) 220-4756 • www.visionhardware.com

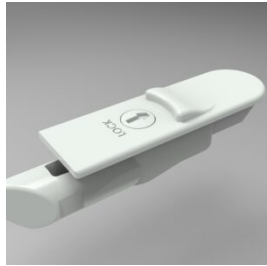
COPYRIGHT © 2025 VISION HARDWARE. ALL RIGHTS RESERVED.
THESE PRODUCTS MAY BE PROTECTED BY ONE OR MORE VISION PATENTS. PATENT
INFORMATION CAN BE OBTAINED AT WWW.VISIONHARDWARE.COM/PATENTS

TILT LATCHES



CONCEPT 3722B

Impact submarine tilt latch with locking feature.



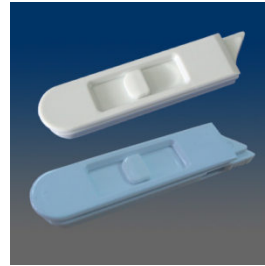
CONCEPT 3722

Submarine tilt latch with locking feature.



CONCEPT 3716

Impact tilt latch concept.



7397FC-LR

Tilt latch, flush-mount, flat button, round-ended housing, left. PC housing, soft spring. Except for spring, others are same as 7390



7391SB-LR

Tilt latch, flush-mount, sharkfin button, round-ended housing, self-locking, left. PC housing; having 4 types of tongue offsets A/ B/ C/ D; the multiple flexible tabs on the bottom housing can meet different setbacks requests.



7391-LR

Tilt latch, flush mount, ask for button styles, round ended housing, lockable, has 4 tongue offsets A/ B/ C/ D; the multiple flexible tabs fit different setbacks



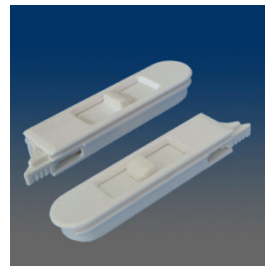
7390SXS-LR

Tilt latch, flush-mount, sharkfin button, round-ended housing, right. PC housing; having 4 types of tongue offsets AS/ BS/ CS/ DS; scalloped shape tongue, the multiple flexible tabs on the bottom housing can meet different setbacks requests.



7390S-LR

Tilt latch, flush-mount, sharkfin button, round-ended housing, left. PC housing; having 4 types of tongue offsets A/ B/ C/ D; the multiple flexible tabs on the bottom housing can meet different setbacks requests.



7390RBS-LR

Tilt latch, flush-mount, raised button, round-ended housing, left. PC housing; having 4 types of tongue offsets AS/ BS/ CS/ DS; scalloped shape tongue, the multiple flexible tabs on the bottom housing can meet different setbacks requests.



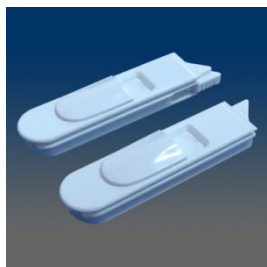
7390R-LR

Tilt latch, flush-mount, raised button, round-ended housing, left PC housing; having 4 types of tongue offsets A/ B/ C/ D; the multiple flexible tabs on the bottom housing can meet different setbacks request.



7390FXS-LR

Tilt latch, flush-mount, flat button, round-ended housing, left. PC housing; having 4 types of tongue offsets AS/ BS/ CS/ DS; scalloped shape tongue, the multiple flexible tabs on the bottom housing can meet different setbacks requests.



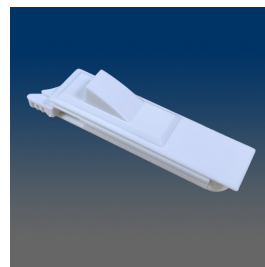
7390EC-LR

Tilt latch, flush-mount, elliptical button, round-ended housing, left PC housing; having 4 types of tongue offsets A/ B/ C/ D; the multiple flexible tabs on the bottom housing can meet different setbacks request.



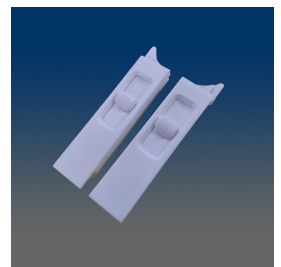
7390-LR

Tilt latch, flush mount, ask for button styles, has 4 tongue offsets A/ B/ C/ D; rounded end and the multiple flexible tabs for different setbacks



7383S-SB-L/R

tilt latch -L/R



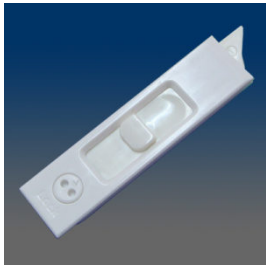
7383R-SB-LR

tilt latch



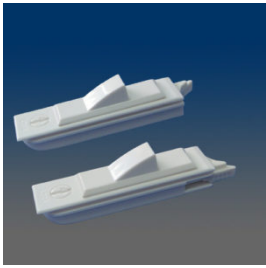
7382XX

Tilt latch, flush mount, flat, raised, elliptical or sharkfin button types, has 4 types of tongue offsets A/ B/ C/ D, the multiple flexible tabs on the bottom housing can meet different setbacks



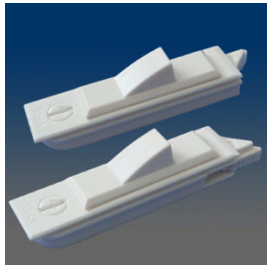
7382-LR

Tilt latch, flush mount, ask for button styles, square ended housing, lockable, has 4 tongue offsets A/ B/ C/ D; the multiple flexible tabs on the bottom housing can meet different setbacks.



7381SBS-LR

Tilt latch, flush-mount, sharkfin button, square-ended housing, self-locking, left. PC housing; having 4 types of tongue offsets AS/ BS/ CS/ DS; scalloped shape tongue, the multiple flexible tabs on the bottom housing can meet different setbacks requests.



7381SB-LR

Tilt latch, flush-mount, sharkfin button, square-ended housing, self-locking, left. PC housing; having 4 types of tongue offsets A/ B/ C/ D; the multiple flexible tabs on the bottom housing can meet different setbacks requests.



7381RBS-LR

Tilt latch, flush-mount, raised button, square-ended housing, self-locking, left. PC housing; having 4 types of tongue offsets AS/ BS/ CS/ DS; scalloped shape tongue, the multiple flexible tabs on the bottom housing can meet different setbacks requests.



7381RB-LR

Tilt latch, flush-mount, raised button, square-ended housing, self-locking, left PC housing; having 4 types of tongue offsets A/ B/ C/ D; the multiple flexible tabs on the bottom housing can meet different setbacks request.



7381FBS-LR

Tilt latch, flush-mount, flat button, square-ended housing, self-locking, left. PC housing; having 4 types of tongue offsets AS/ BS/ CS/ DS; scalloped shape tongue, the multiple flexible tabs on the bottom housing can meet different setbacks requests.



7381EBS-LR

Tilt latch, flush mount, elliptical button, square ended housing, self locking, left. PC housing; having 4 types of tongue offsets AS/ BS/ CS/ DS; scalloped shape tongue, the multiple flexible tabs on the bottom housing can meet different setbacks request.



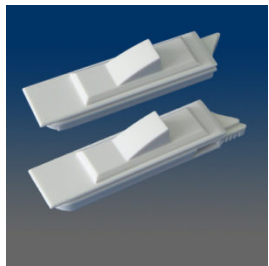
7381EB-LR

Tilt latch, flush-mount, elliptical button, square-ended housing, self-locking, left PC housing; having 4 types of tongue offsets A/ B/ C/ D); the multiple flexible tabs on the bottom housing can meet different setbacks request.



7381-LR

Tilt latch, flush mount, ask for button styles, square ended housing, self locking, has 4 types of tongue offsets A/ B/ C/ D; the multiple flexible tabs on the bottom housing can meet different setbacks request.



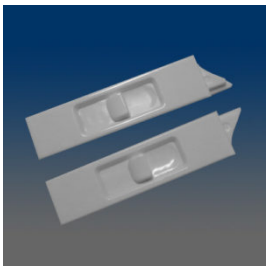
7380S-LR

Tilt latch, flush mount, shark fin button, square ended housing, left. PC housing; having 4 types of tongue offsets A/ B/ C/ D; the multiple flexible tabs on the bottom housing can meet different setbacks request.



7380RXS-LR

Tilt latch, flush-mount, raised button, square-ended housing, left PC housing; having 4 types of tongue offsets A/ B/ C/ D; the multiple flexible tabs on the bottom housing can meet different setbacks request.



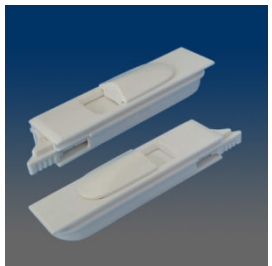
7380RB-LR

Tilt latch, flush-mount, raised button, square-ended housing, left PC housing; having 4 types of tongue offsets A/ B/ C/ D; the multiple flexible tabs on the bottom housing can meet different setbacks request.



7380FXS-LR

Tilt latch, flush-mount, raised button, square-ended housing, left PC housing; having 4 types of tongue offsets A/ B/ C/ D; the multiple flexible tabs on the bottom housing can meet different setbacks request.



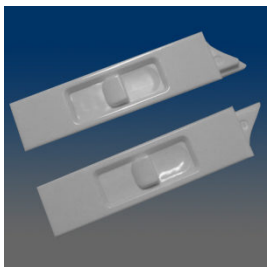
7380EBS-LR

Tilt latch, flush-mount, elliptical button, square-ended housing, right. PC housing; having 4 types of tongue offsets AS/ BS/ CS/ DS; scalloped shape tongue, the multiple flexible tabs on the bottom housing can meet different setbacks requests.



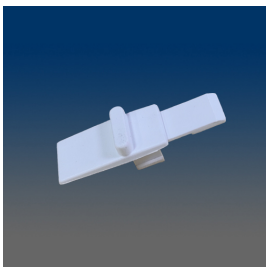
7380E-LR

Tilt latch, flush-mount, elliptical button, square-ended housing, left PC housing; having 4 types of tongue offsets A/ B/ C/ D; the multiple flexible tabs on the bottom housing can meet different setbacks request.



7380-LR

Tilt latch, flush mount, ask for button styles, has 4 tongue offsets A/ B/ C/ D; square end and the multiple flexible tabs for different setbacks



7304-03A

tilt latch button



7302

Tilt latch, flush mount, non-handed



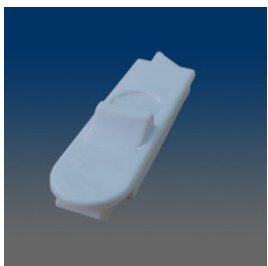
7301

Tilt latch, flush mount, non-handed, round housing



7220-LR

Tilt latch, raised button, flush mount, round tongue



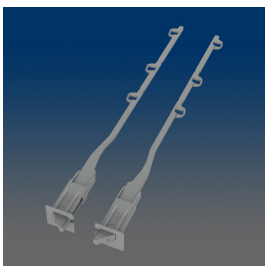
7203-LR

Tilt latch, high button, flush mount



7200-LR

Tilt latch with raised button, flush-mount, left & right, with a square corner, with high design pressure ratings



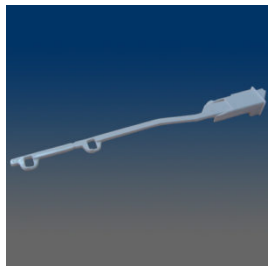
7122-LR

integrated tilt latch, handed



7120A-LR

integrated tilt latch, handed



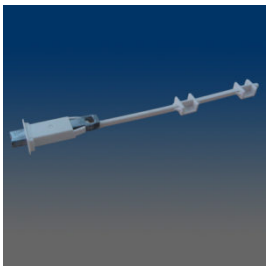
7120-LR

Tilt Latch for Lock/Tilt Combo, works with 3263A for vinyl window



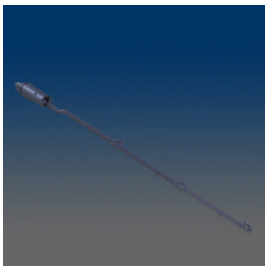
7111

Tilt Latch for Lock/Latch Combo, works with 3272 for foam window



7110

Tilt Latch for Lock/Latch Combo, works with 3250L/R and 3252L/R for a wood window



7108-LR

integrated tilt latch



7107-LR

integrated tilt latch, handed



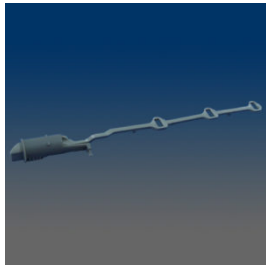
7106-LR

Integrated tilt latch for Lock Tilt, handed



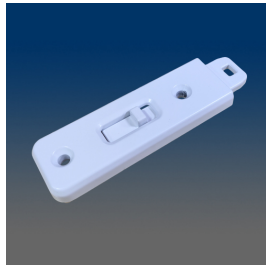
7104-LR

Tilt Latch for Lock/Latch Combo, works with 327L/R for vinyl window



7100-LR

Tilt Latch for Lock/Latch Combo for vinyl window



2893

impact tilt latch, zinc, works with 2511



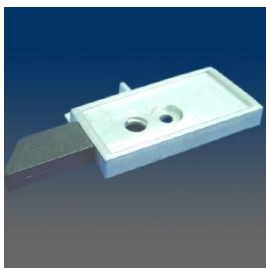
2886-LR

Tilt latch, flush mount, zinc housing, handed, similar to 2861 but with elliptical button



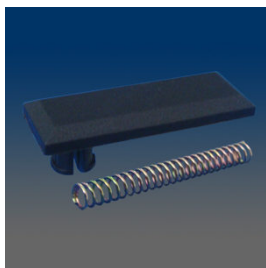
2876-LR

tilt latch, zinc, screw mount, handed



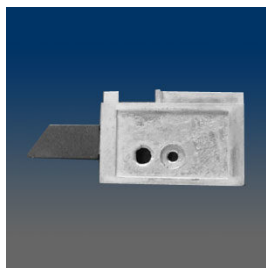
2868

Tilt latch, surface mount, left or right, match with 2866L and 2867



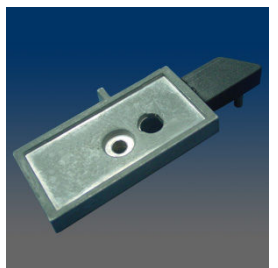
2867

Tilt latch cover, plastic, spring attached



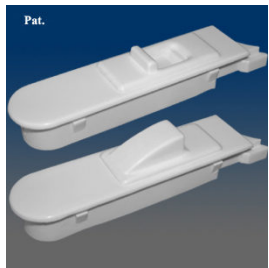
2865

Tilt latch, surface mount, zinc, left or right, match with 2866L and 2867



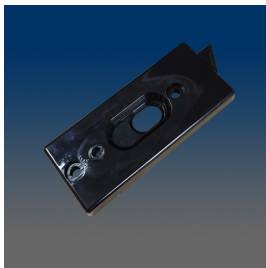
2864

Tilt latch, surface mount, with a plastic tongue cover, zinc, left or right, attached plastic cover 2867



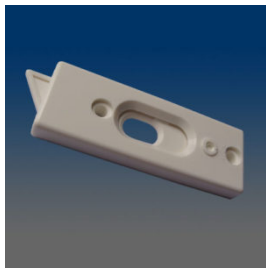
2860-LR

Tilt latch, flush mount, snap in, ask about button styles, round ended housing



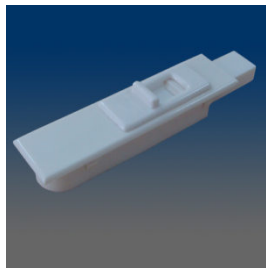
2831A-LR

Tilt Latch, Surface Mount, handed, lockable w/ tri-wing



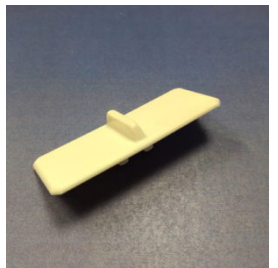
2831-LR

Tilt Latch, Surface Mount, handed, lockable w/ tri-wing



2829

Tilt latch, flush mount



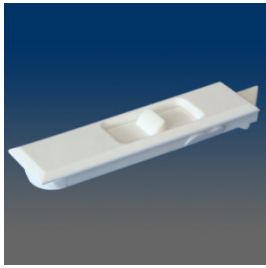
2827

button for 2826



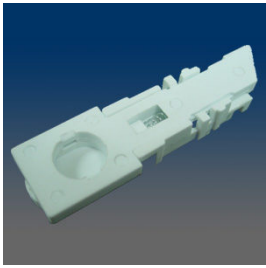
2826-LR

Tilt latch, internal, 2820 housing and new tongue, handed



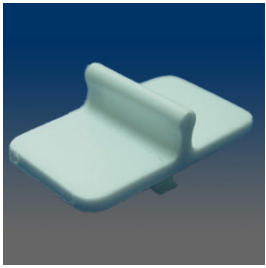
2823-LR

Tilt latch, thin, flush mount, handed



2822-LR

Tilt latch, internal, handed



2821

Pull button, nylon, for 2822



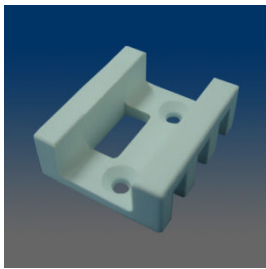
2819

Tilt latch for impact, surface mount, 2.508" hole space, zinc die cast, lockable



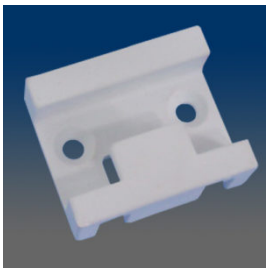
2818

Tilt latch for impact, surface mount, 2.437" hole space, zinc die cast, lockable



28171

Keeper with no tab



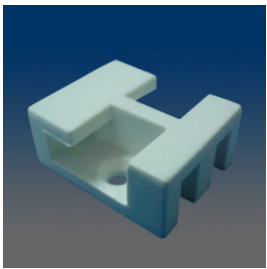
2817

Keeper match for 2816



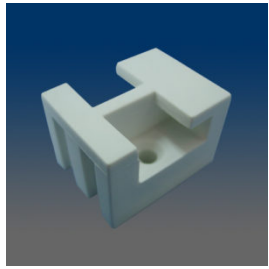
2816-LR

Tilt latch for impact, surface mount, 2.504" hole space, zinc die cast, handed



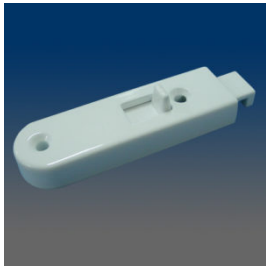
28153

Keeper match for 28151, small



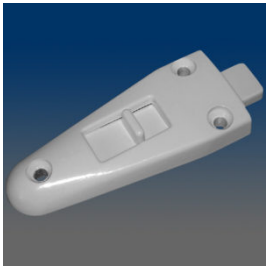
28152

Keeper match for 28151, large



28151-LR

Tilt latch for impact, surface mount, 2.244" hole space, zinc die cast, handed



2812

Tilt latch, surface mount, 2" hole space, zinc housing, square end tongue



2811-LR

TILT LATCH, SURFACE MOUNT, SQUARE HOUSING, HANDED



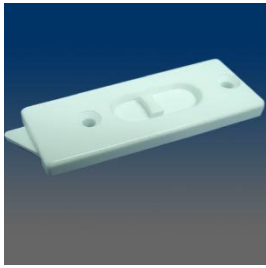
2808-LR

Tilt latch, surface mount, 1.375" hole space, #6 screw, handed



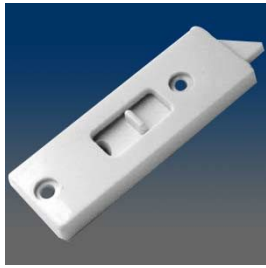
2807-LR

Tilt latch, surface mount, 1.811" hole space, handed



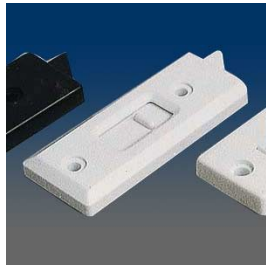
2806-LR

Tilt latch, surface mount, 2.02" hole space, handed



2804-LR

Tilt latch, surface mount, 2.01" hole space, handed



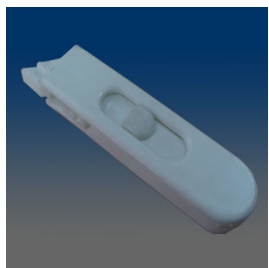
2801-LR

Tilt latch, surface mount, 2.06" hole space, handed



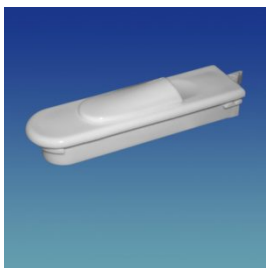
2800-LR

Tilt latch, surface mount, 2.33" hole space, handed



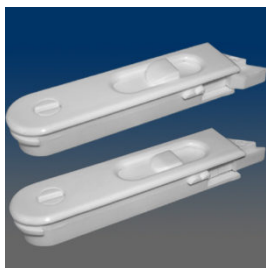
2797-LR

Tilt latch, flush mount, round ended housing, soft spring



2794E-LR

Tilt Latch, Round Housing, elliptical button



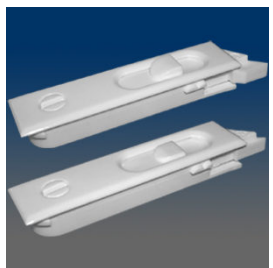
2791-LR

Tilt latch, flush mount, ask about button styles, round ended housing, lockable



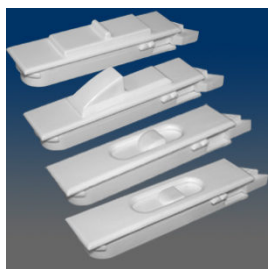
2790-LR

Tilt latch, flush mount, button styles shown, round ended housing



2781-LR

Tilt latch, flush mount, ask about button styles, square ended housing, lockable



2780-LR

Tilt latch, flush mount, square ended housing, Inquire about various buttons and offsets.



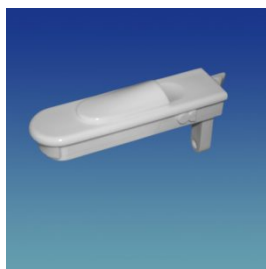
2698-LR

Tilt latch, flush mount, square ended housing, left or right handed



2694-LR

Tilt latch, flush mount, elliptical button, tongue offset "C", special round ended housing, available in left or right handed



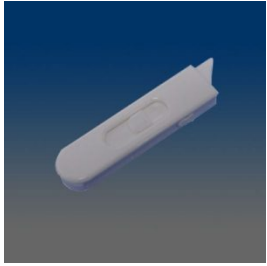
2693EB-LR

Tilt latch, flush mount, elliptical button, tongue offset "B", special round ended housing with screw locator, matte finish, available in left and right handed



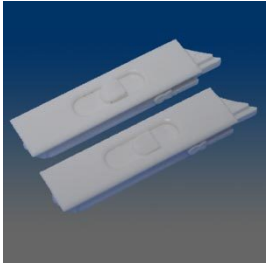
26931-LR

Tilt latch, flush mount, elliptical button, special round ended housing with screw locator, matte finish, available in left or right handed



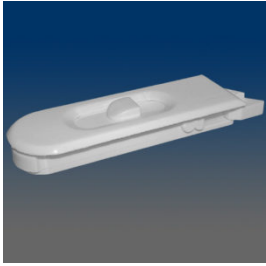
2690-LR

TILT LATCH



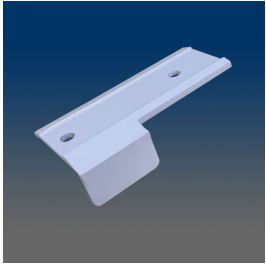
2680-LR

Tilt latch, flush mount, square ended housing, inquire about various buttons and offsets, available in left or right handed



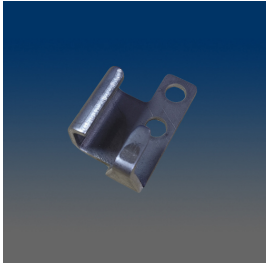
2640-LR

Tilt latch, flush mount, raised button, Inquire about offsets, bottom setback 1", available in left or right handed



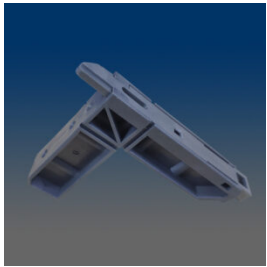
2512-LR

tilt latch cleat



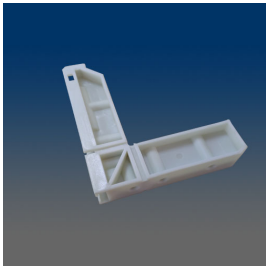
2511-LR

keeper for 2893 tilt latch



11101A-LR

corner with integrated tilt latch, handed



11101

corner, passive version of 11101A