

# 2025 Product Catalog

BALANCE HARDWARE | CASEMENT HARDWARE | END RAIL CAPS | HOPPER HARDWARE | JAMB ADJUSTERS | KEEPERS | LOCK HARDWARE

VOLUME 1



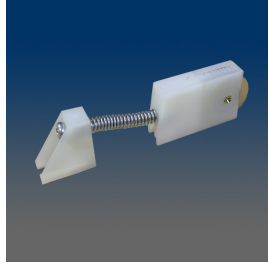
**VISION**  
HARDWARE  
*Consistently Reliable*

**Hundreds of Parts  
and Unlimited Ways to Improve Your Products**

(800) 220-4756 • [www.visionhardware.com](http://www.visionhardware.com)

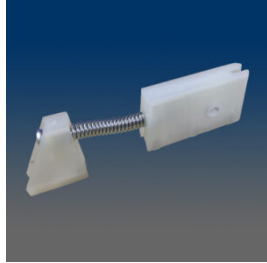
COPYRIGHT © 2025 VISION HARDWARE. ALL RIGHTS RESERVED.  
THESE PRODUCTS MAY BE PROTECTED BY ONE OR MORE VISION PATENTS. PATENT  
INFORMATION CAN BE OBTAINED AT [WWW.VISIONHARDWARE.COM/PATENTS](http://WWW.VISIONHARDWARE.COM/PATENTS)

# SCREEN HARDWARE



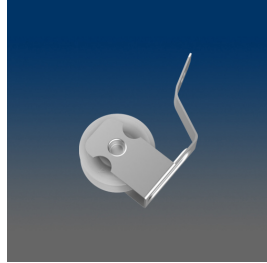
**SR111**

screen roller



**SR110**

Screen Roller



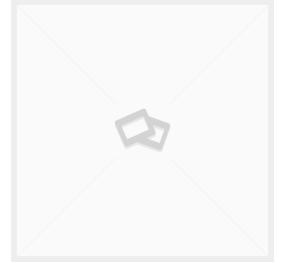
**SR109**

screen door roller, screw mount



**SR107**

screen door corner & roller assembly



**SR1062SS**

Screen Corner with SS wheel



**SR106**

screen door corner & roller assembly, also available w/ SS wheel



**SR105**

screen door roller, screw mount, SS also available



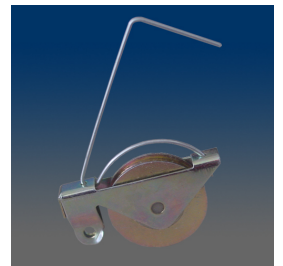
**SR104**

screen door roller, screw mount, plastic wheel



**SR103**

screen door roller, screw mount, SS also available



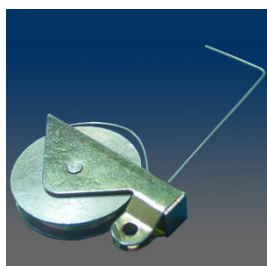
**SR101C**

screen door roller, steel, works with 1059 & 1068, SS also available



**SR100C**

screen door roller, steel, works with 1059 & 1068, SS also available



**SR100**

screen door roller, steel, works with 1059 & 1068, SS also available



**S512**

screen door latch assembly



**S511**

screen door latch assembly



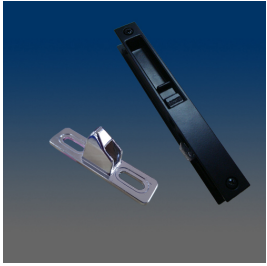
**S508LH-1470A**

screen door latch assembly w/ keeper



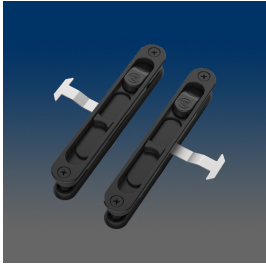
**S507-LR**

screen door latch assembly, handed



**S506LH-1470**

screen door latch assembly w/ keeper



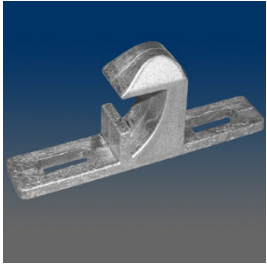
**S505A-LR**

screen door latch assembly, handed



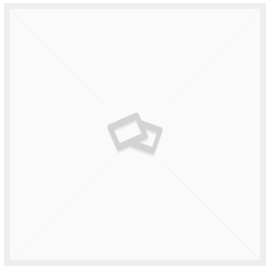
**S504A-LR**

screen door latch assembly, handed



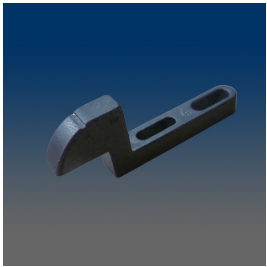
**PM200**

screen door keeper, zinc



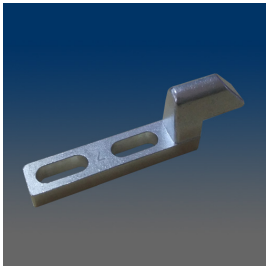
**CONCEPT 2976**

Available with Steel, Stainless Steel and plastic wheel.



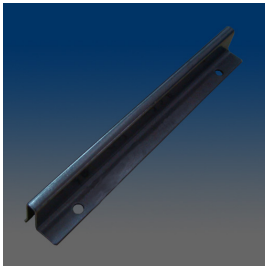
**5242**

screen door keeper, zinc



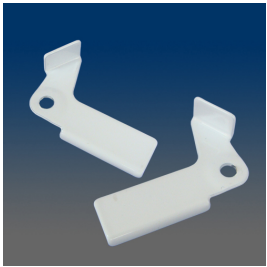
**5241**

screen door keeper, zinc



**5227**

screen clip, stainless steel



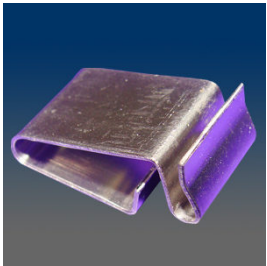
**5224-LR**

screen clip, handed, stainless steel



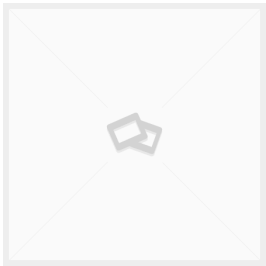
**5224**

Screen Clip in Left and Right



**5218**

crossbar clip, stainless steel



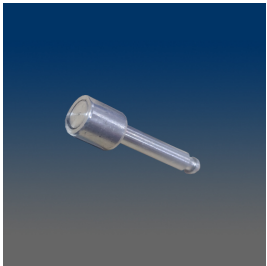
**5217SS**

tension spring, stainless steel version of 5217



**5217**

tension spring, steel

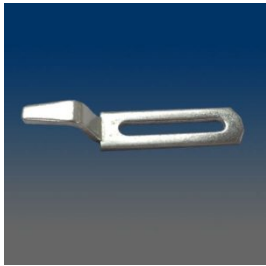


**2242**

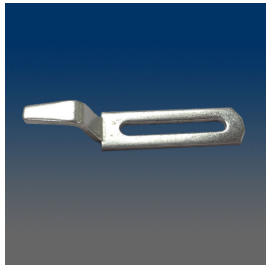
screen pin, aluminum



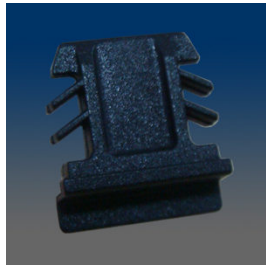
**1980**  
screen door keeper, steel



**1973**  
screen door keeper, steel



**1973**  
screen door keeper, steel



**1963**  
Screen crossbar clip, plastic



**1472**  
screen door pull handle



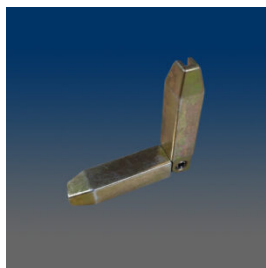
**1471**  
screen door pull handle



**1449.604**  
Screen lock components



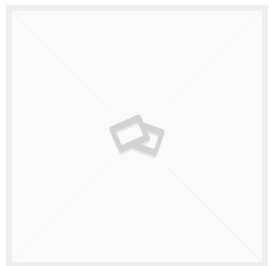
**1449-04**  
screen lock plate



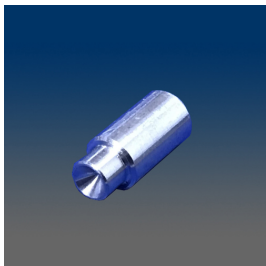
**14109**  
Screen Hinged Connector



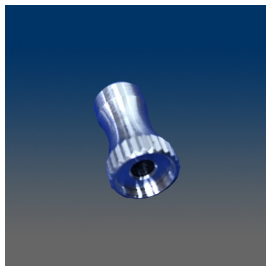
**1091A-LR**  
slide bolt corner assembly



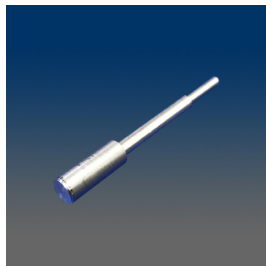
**10918**  
Screen Plunger



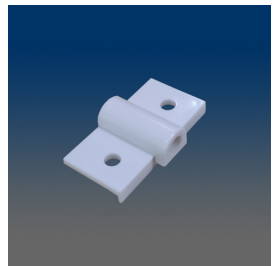
**109171**  
Screen Pin



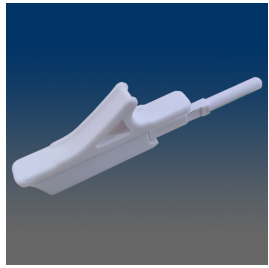
**109162**  
Screen Pin cap, works with 109161



**109161**  
Screen Pin, works with 109162

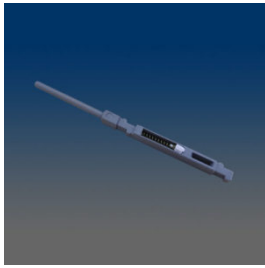


**10915**  
screen plunger housing



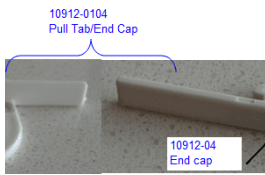
**10914**

screen latch



**10913**

Screen latch, plastic plunger+spring+blocking dot assembly



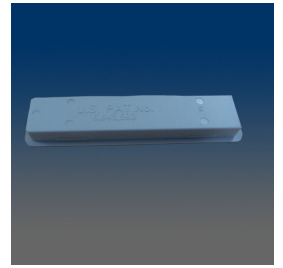
**10912-0104**

Pull tab/End cap, packed in same box w/ separate bags, matched with 10912



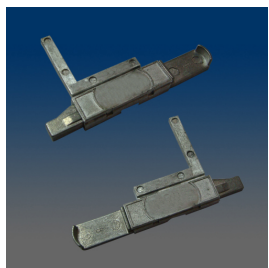
**10912**

screen latch



**10911**

screen grip



**1090A-LR**

slide bolt corner assembly



**1089**

J strike kit



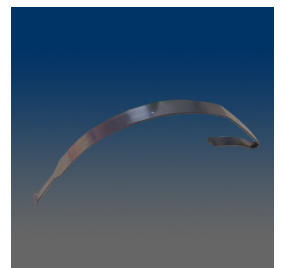
**1088**

Screen plunger, aluminum shaft assembled with spring



**10792**

Tension Spring



**10791**

screen spring



**1078**

CASEMENT SCREEN PLUNGER



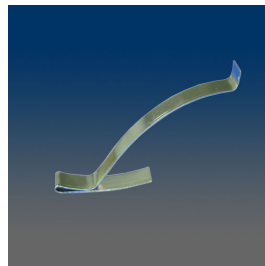
**1075**

DOG & SPRING SCREEN TRIGGERS



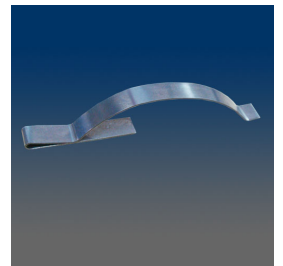
**1074**

screen spring



**1071**

screen spring



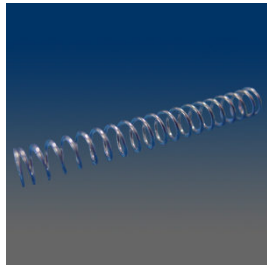
**1069**

screen spring



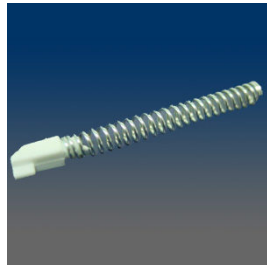
**1068**

Screen corner, zinc, with adjustable screw, mill finish



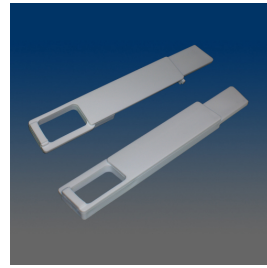
**1067**

Coil spring, white zinc-plated



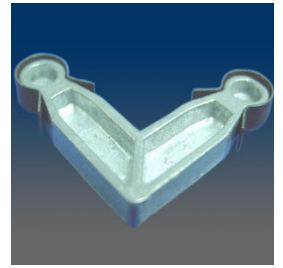
**1066**

Dog & Spring for screen trigger, plastic dog



**1065-LR**

slide bolt, plastic, handed



**1060**

Screen corner, zinc, internal, with spring attached on the head, mill finish



**1059SS**

Screen corner, plastic, adjustable Stainless Steel screw, similar to 1068



**1059**

Screen corner, plastic, adjustable screw, similar to 1068



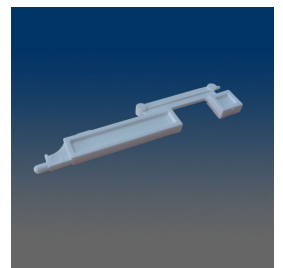
**1056**

Screen corner, zinc, internal, with dimples, mill finish



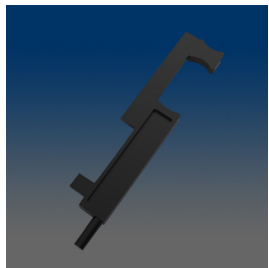
**1054**

Screen corner, zinc, internal, with dimples, mill finish



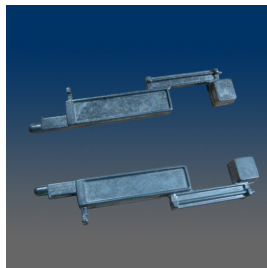
**10533**

slide bolt, plastic



**10532**

slide bolt, plastic



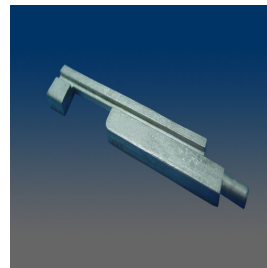
**1053-LR**

slide bolt, zinc, handed



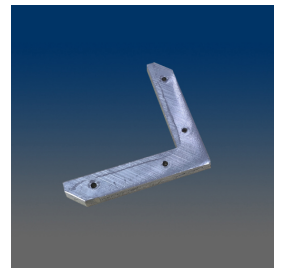
**1052-LR**

slide bolt, plastic, handed



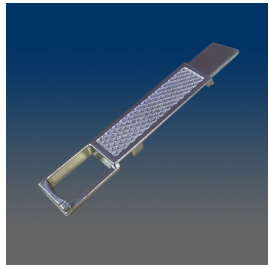
**1051SS**

slide bolt, stainless steel



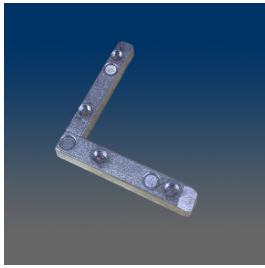
**10513**

screen corner, mitered, aluminum



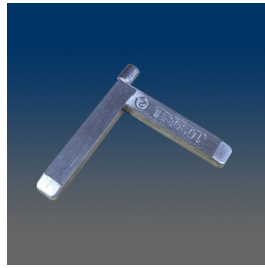
**10510-L/R**

Trigger Bolt for storm window glass panel, left/right



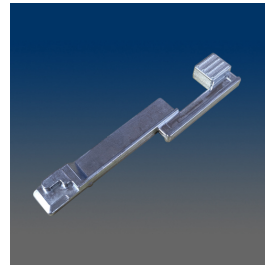
**10509**

Bottom corner for aluminum screen panel, left/right



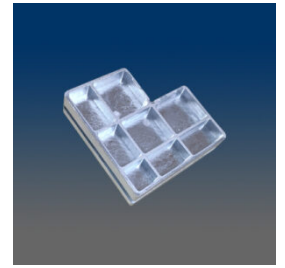
**10508-L/R**

Top Corner for aluminum screen panel, Left/Right



**10507-L/R**

Trigger bolt for aluminum screen, Left/Right



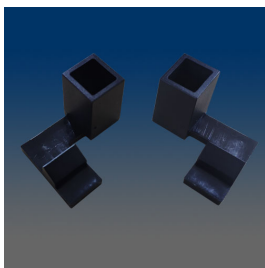
**10504**

Screen Corner



**10503**

screen corner, mitered



**10502-LR**

screen clip, bottom, handed



**10501**

screen clip, top



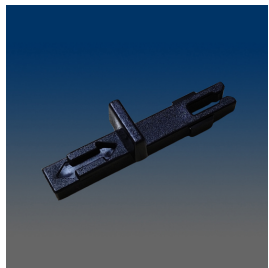
**1047**

screen corner w/ pull tab, plastic



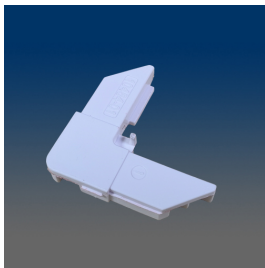
**1046**

screen corner, plastic



**10454-02**

slide bolt



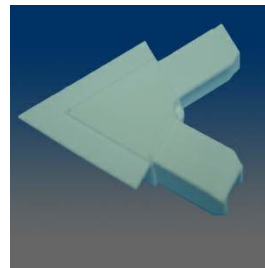
**10454-01**

screen corner



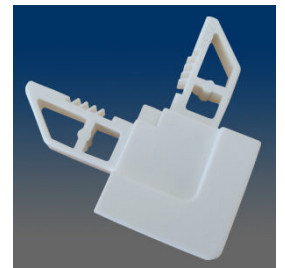
**1043**

Screen corner, plastic, external, flanged, 120 degree



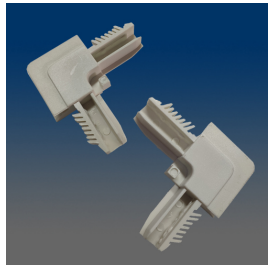
**1042**

Screen corner, plastic, external, flanged, 60 degree



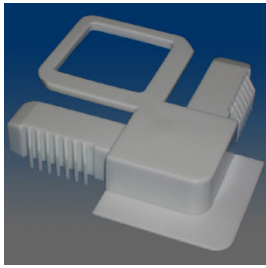
**10398**

Screen corner, plastic, external, flanged



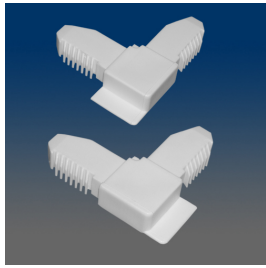
**10392-LR**

screen corner, handed, w/ stop



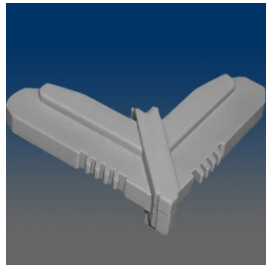
**10391**

Screen corner, plastic, external, flanged, with pulling ring, match 10392L/R



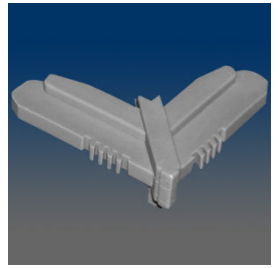
**1039-LR**

screen corner, handed



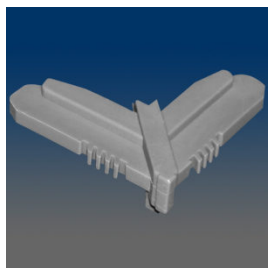
**10386**

Screen corner, plastic, external, miter, stop, .28 x .46" leg, match with 10376



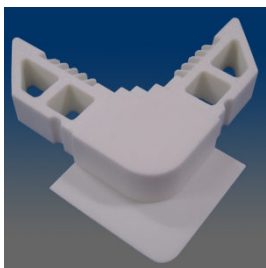
**10385-30GF**

Screen corner, plastic, external, miter, stop, .22 x .46" leg, match with 10375, 30% glass filled nylon



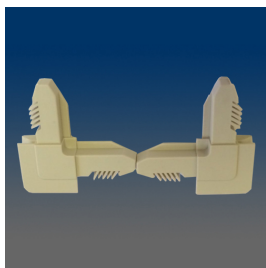
**10385**

Screen corner, plastic, external, miter, stop, .22 x .46" leg, match with 10375



**10384**

Screen corner, plastic, external flanged



**10383-LR**

screen corner, handed, w/ stop



**10382**

screen corner, plastic, external, w/ stop, works w/ 10371 & 10381



**10381**

screen corner, plastic, external, w/ stop, works with 10371 & 10382



**1038-LR**

screen corner, handed, w/ stop



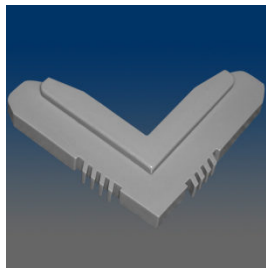
**10379**

screen corner, plastic, internal



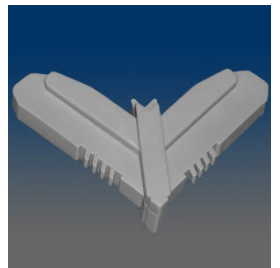
**10378**

screen corner, mitered



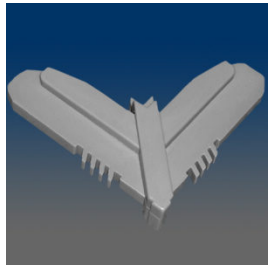
**10377**

Screen corner, plastic, internal, .22 x .32" leg



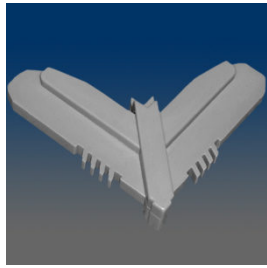
**10376**

Screen corner, plastic, external, miter, .28 x .32" leg, match with 10386



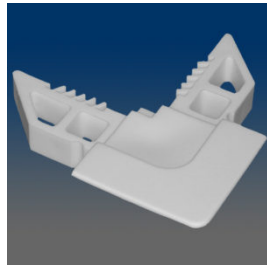
**10375-30GF**

Screen corner, plastic, external, miter, .22 x .32" leg, match with 10385, having two material: PA6, PA6+30%GF



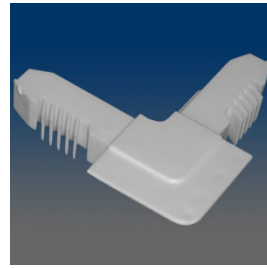
**10375**

Screen corner, plastic, external, miter, .22 x .32" leg



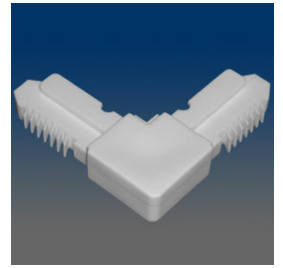
**10374**

screen corner, plastic, flanged, external



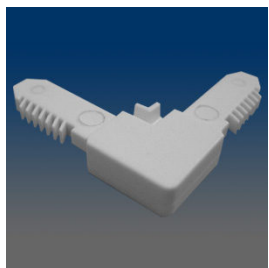
**10373**

screen corner, plastic, flanged, external



**10372**

screen corner, plastic, external



**10371**

screen corner, plastic, external, works with 10381 & 10382



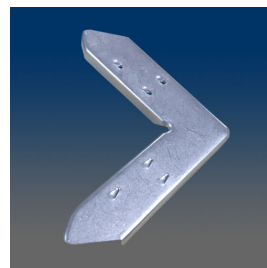
**1037**

screen corner, flanged, match with 1038L/R



**10367**

screen corner, internal



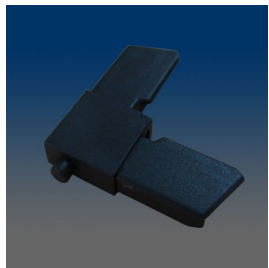
**10366**

screen corner, internal, steel



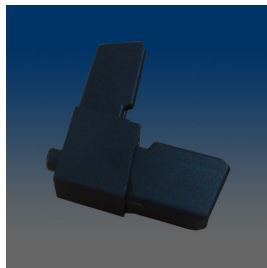
**10365**

screen corner, internal



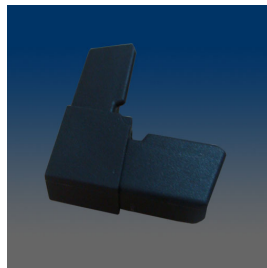
**10364**

screen corner w/ bottom peg



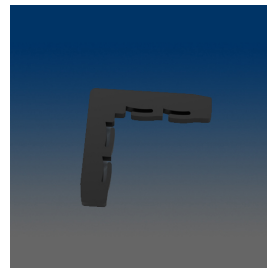
**10363**

screen corner w/ top peg



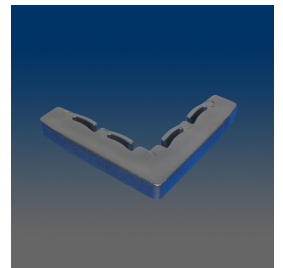
**10362**

screen corner w/ stop



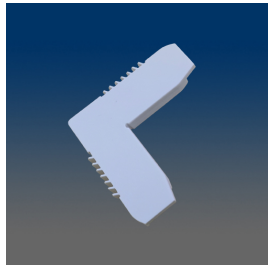
**10361**

screen corner, thinner version of 1036



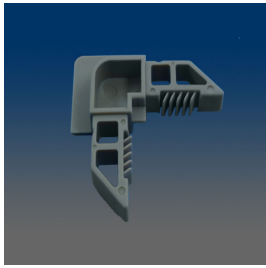
**1036**

screen corner, internal



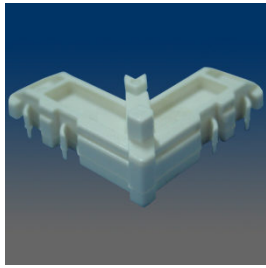
**10356**

Screen Corner Key



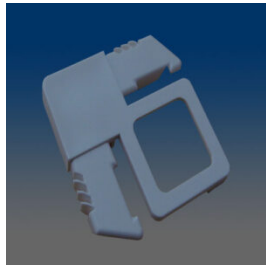
**10355**

screen corner, flanged



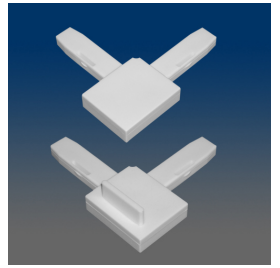
**10354**

screen corner, mitered



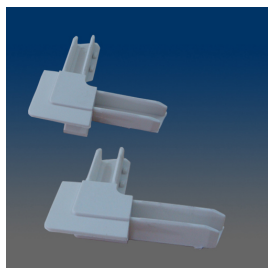
**10353**

screen corner w/ pull tab



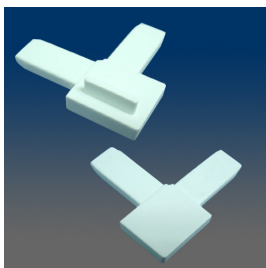
**10352-LR**

screen corner w/ stop, handed



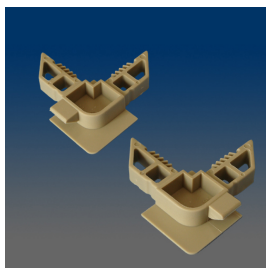
**10351-LR**

screen corner w/ stop, handed



**1035-LR**

screen corner w/ stop, handed



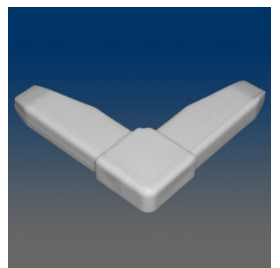
**10345-LR**

screen corner w/ stop, handed



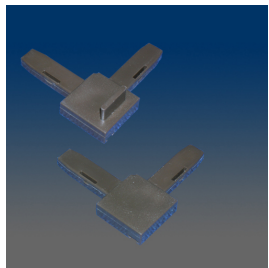
**10344**

screen corner, mitered



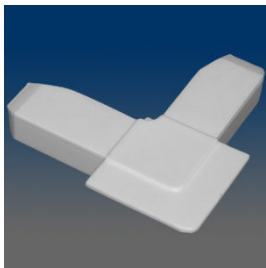
**10343**

screen corner



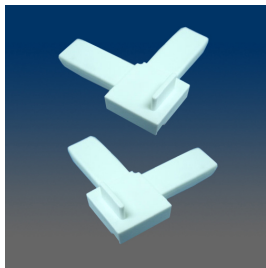
**10342-LR**

screen corner w/ stop, handed



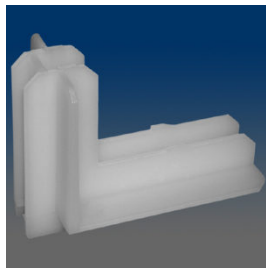
**10341**

screen corner, flanged



**1034-LR**

screen corner, handed, w/ stop



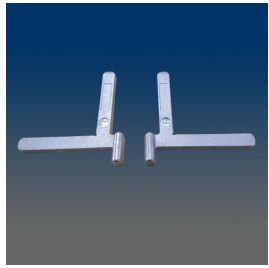
**1032**

screen corner, internal



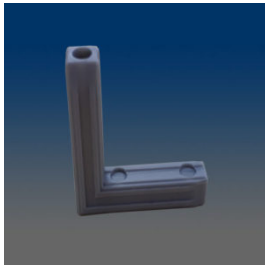
**10314**

screen corner, zinc



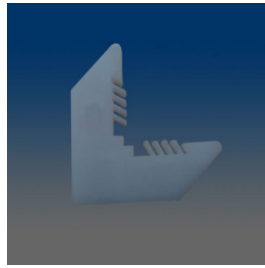
**10313-LR**

screen corner w/ tab, zinc



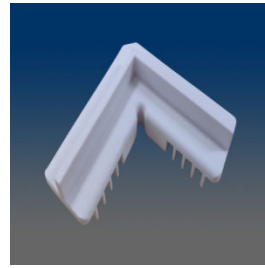
**10312**

screen corner, internal



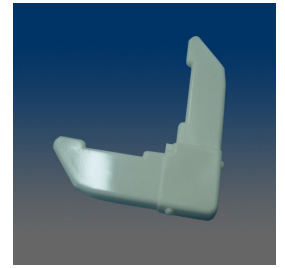
**10311**

screen corner, internal



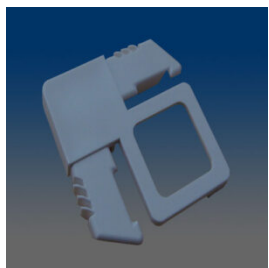
**10310**

screen corner, internal



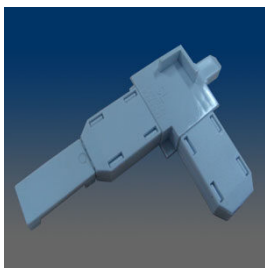
**1031**

screen corner



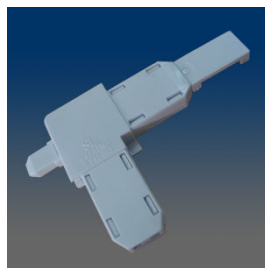
**10308**

screen corner with stop and pull tab



**10307**

screen corner with latch and stop



**10306**

screen corner with latch



**10305**

screen corner with stop



**10304**

screen corner



**1029**

knife latch, plastic



**1028**

screen tab



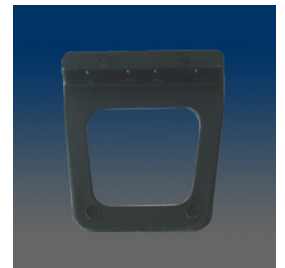
**10273**

screen plunger assembly



**1027**

screen plunger assembly



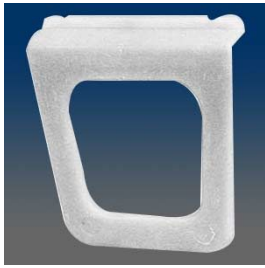
**1026**

screen pull tab



**1025**

knife latch, plastic



**1023**

screen pull tab



**1022**

knife latch, plastic



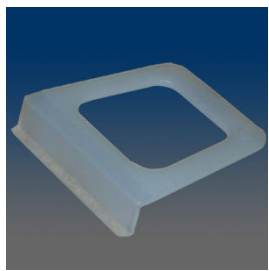
**1021A**

knife latch, polycarbonate  
version of 1021



**1021**

knife latch, plastic



**1020**

screen pull, plastic



**1019**

knife latch, plastic



**1012C**

mark "X" pin, 1.535"



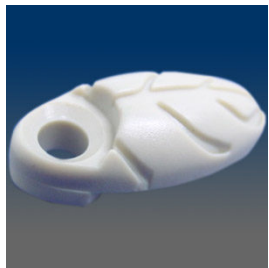
**1012A**

mark "X" pin, 1.303"



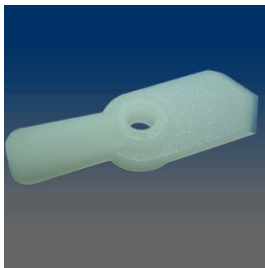
**1012**

mark "X" pin, 1.15"



**1011**

screen tab, nylon



**1010**

screen tab, nylon