

2023 Product Catalog



VISION[®]
HARDWARE
Consistently Reliable

**We Have Thousands of SKUs
and Unlimited Ways to Improve Your Products**

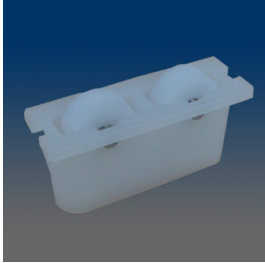
(800) 220-4756 • www.visionhardware.com

These products may be protected by one or more Vision patents.
Patent information can be obtained at www.visionhardware.com/patents

ROLLERS



CONCEPT 3732



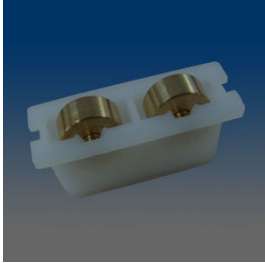
1183

Roller, tandem, 11381 SS axle, 11381 POM wheel, 1178 plastic housing



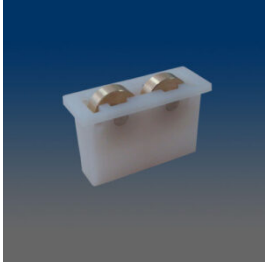
1182

Roller, tandem, brass wheel, plastic housing (PA6)



1178

Roller, tandem, plastic housing, brass wheel, brass axle



1176

Tandem Roller, SS axle, Brass wheel.



1167

Roller, tandem, plastic wheel 11381-02, stainless steel axle 11381-03, housing 1167-01, similar to 1165



1166

Roller, tandem, plastic wheel 11381-02, stainless steel axle 11381-03, new housing having pegs to fit into 3/16" drilled holes



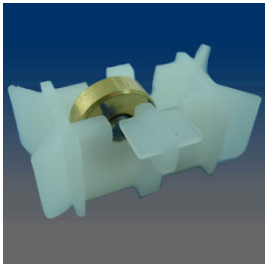
1165

Roller, tandem, plastic wheel 11381-02, stainless steel axle 11381-03, housing 1165-01 which is taller than 1132 (same as 1132C except of the housing)



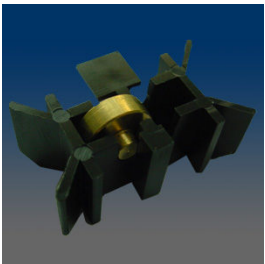
1164

ROLLER, TANDEM, SS AXES, BRASS WHEELS



1161

SINGLE ROLLER/HOUSING ASSEMBLY



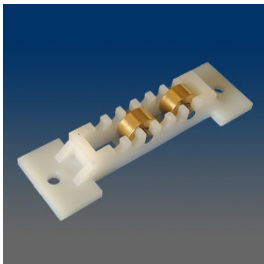
1160

Roller, single, brass wheel, brass axle



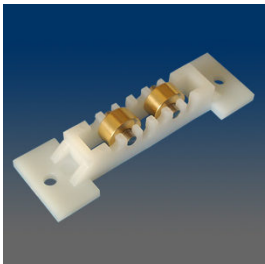
1159

Roller housing, plastic



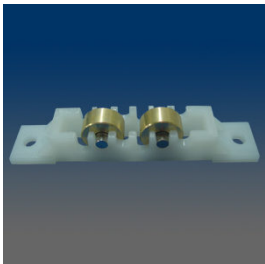
11582

ROLLER TANDEM BRASS WHEELS WITH AXEL



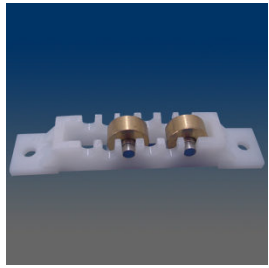
1158

ROLLER, TANDEM, BRASS WHEELS, SS AXEL



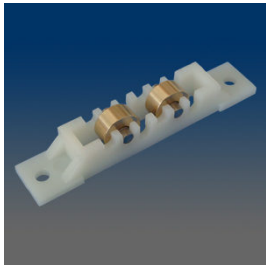
1155

Roller, tandem, brass wheel, stainless steel axle, middle notch, 1138-01 housing



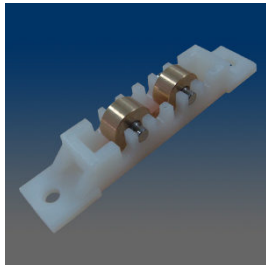
11542

Roller, tandem, brass wheel, stainless steel axle, deepest notch



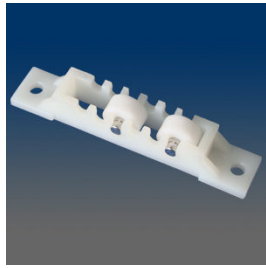
11541

Roller, tandem, brass wheel, stainless steel axle, shallowest notch, 1138-01 housing



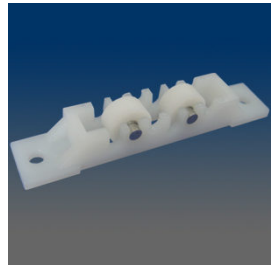
1154

ROLLER, TANDEM, BRASS WHEEL, STAINLESS STEEL AXLE, MIDDLE NOTCH, 1138-01 HOUSING



11522

Roller, tandem, plastic wheel, stainless steel axle, deepest notch, 1138-01 housing



1152

Roller, tandem, plastic wheel, stainless steel axle, middle notch, 1138-01 housing



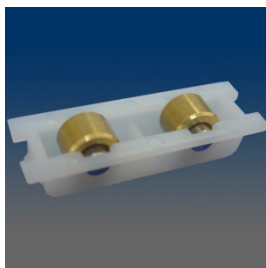
1147

Roller, tandem, solid brass wheel



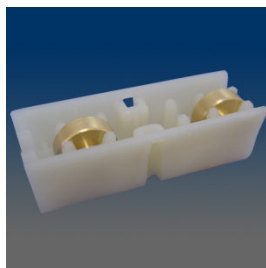
1146

Roller, tandem, brass wheel, stainless steel axle



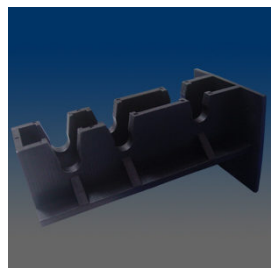
1145

Roller, tandem, brass wheel, stainless steel axle



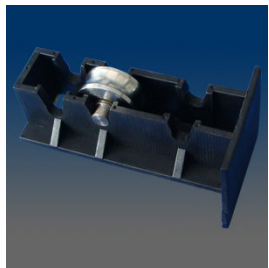
1144

Roller, tandem, solid brass wheel



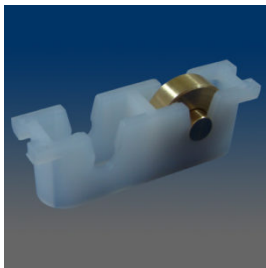
11411

Roller housing of 1141, plastic



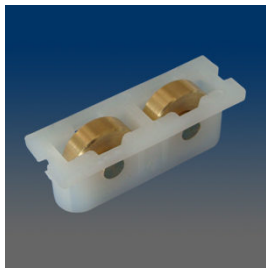
1141

Large roller, single, plastic housing, stainless steel bearing, radiused wheel, located at middle notch



11387

Sash Roller with a brass wheel



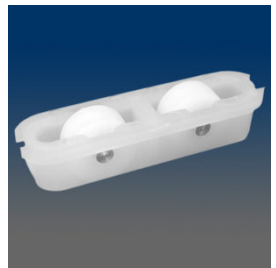
11386

Roller, tandem, brass wheel, brass axle



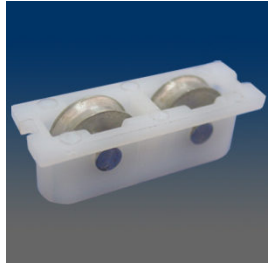
11385

Sash Roller with a brass wheel



11384

Roller, tandem, plastic wheel, stainless steel axle



11382

Roller, tandem, stainless steel radiused wheel, stainless steel axle



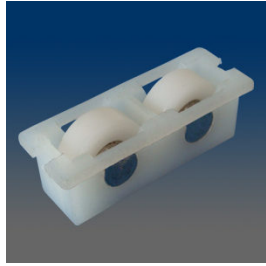
11381

Roller, tandem, plastic wheel, stainless steel axle



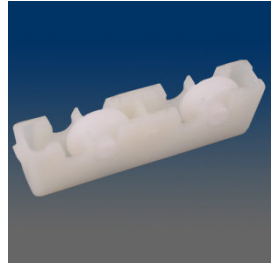
1138

Roller, tandem, plastic radiused wheel, stainless steel axle



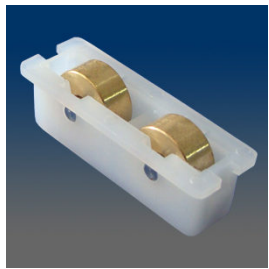
1136C

Roller, tandem, plastic wheel, stainless steel axle



1134

Roller, tandem, solid plastic wheel



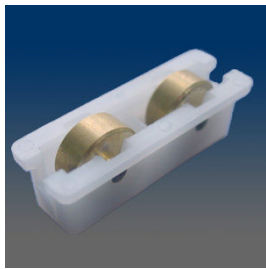
1132D

Roller, tandem, brass wheel, stainless steel axle



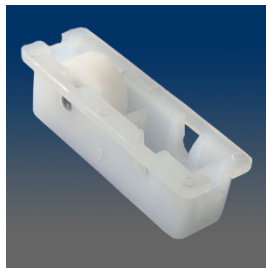
1132C

Roller, tandem, plastic wheel, stainless steel axle, housing is the same as 1132



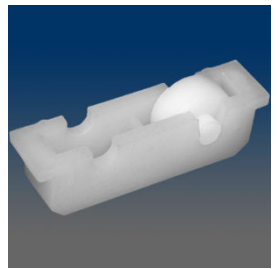
1132

Roller, tandem, solid brass wheel



1131C

Roller, single, plastic wheel, stainless steel axle, single roller version of 1132C



1130C

Roller, single, solid plastic wheel



1130

Roller, single, brass wheel, brass axle, located at deep notch