

2023 Product Catalog



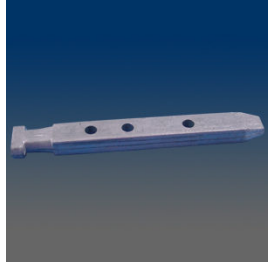
VISION[®]
HARDWARE
Consistently Reliable

**We Have Thousands of SKUs
and Unlimited Ways to Improve Your Products**

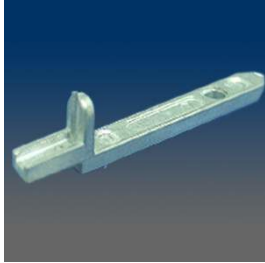
(800) 220-4756 • www.visionhardware.com

These products may be protected by one or more Vision patents.
Patent information can be obtained at www.visionhardware.com/patents

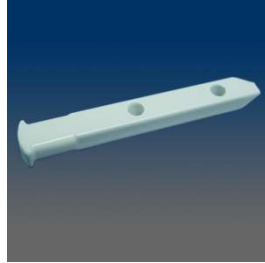
PIVOT BAR



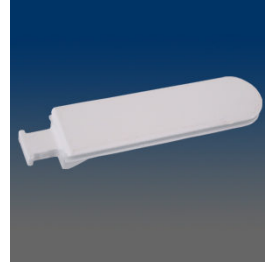
6998
Pivot bar, zinc die-cast



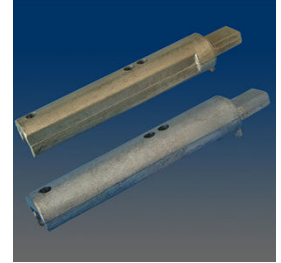
6997
Pivot bar, zinc die-cast



6991
Pivot bar, zinc die-cast, locking



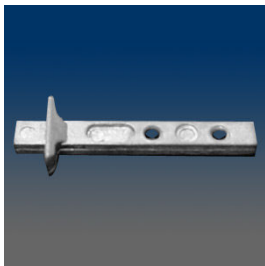
6988
Pivot bar, zinc die-cast, slide-in



6987-L&R
Pivot bar, zinc die-cast, locking



6986
Pivot bar, zinc die-cast



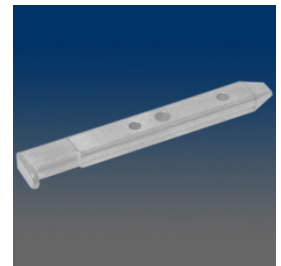
6985
Pivot bar, zinc die-cast, slide-in



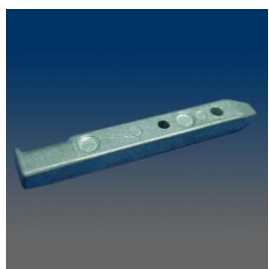
69843
Pivot bar, zinc die-cast, locking,
only different hole location from
6984



69842
Pivot Bar



69841
Pivot bar, zinc die-cast, locking



6984
Pivot bar, zinc die-cast, locking



69832



6983
Pivot bar, zinc die-cast, slide-in



6982
Pivot bar, zinc die-cast, locking

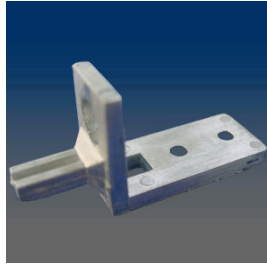


6981
Pivot bar, zinc die-cast, locking



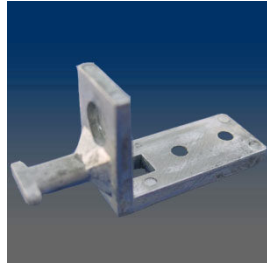
6980

Pivot bar, zinc die-cast, slide-in



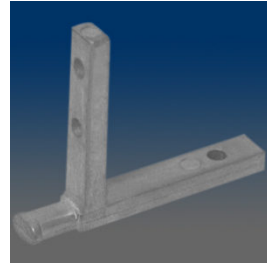
6979

Pivot bar, straight head, milled zinc



6978

Pivot bar, "T"-shaped head, milled zinc

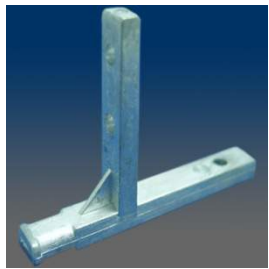


6976

Pivot bar, "T"-shaped head, zinc die-cast



6975



6974

Pivot bar, "T"-shaped head, zinc die-cast



6972

Pivot bar, zinc die-cast



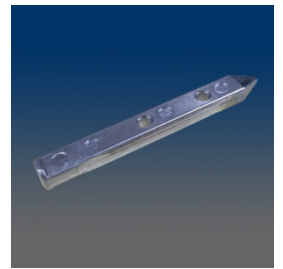
6970

Pivot bar, zinc die-cast



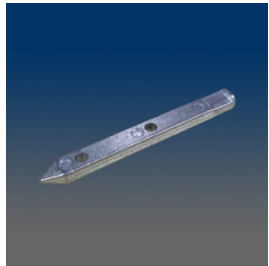
6965BL & BR

Pivot Bar-Eclipse Sash Pac L/R



6949

Pivot Bar, CF balance compatible, 0.685" center to center distance, 0.156" diameter holes



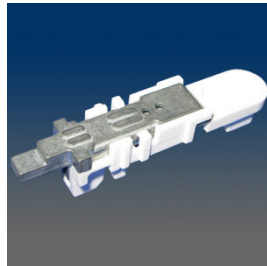
6946

Pivot Bar, 1" center to center, VIG constant force compatible



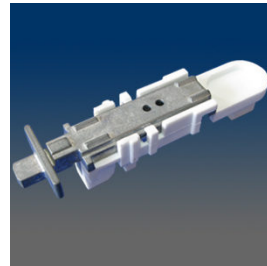
6943

Pivot bar assembly, zinc die-cast, with 2820 housing as a top



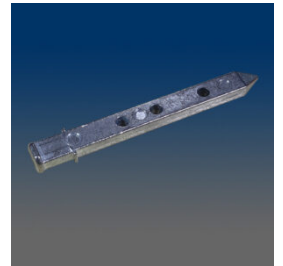
6942

Pivot bar assembly, zinc die-cast, with 2820 housing as a top



6941

Pivot bar assembly, zinc die-cast, with 2820 housing as a bottom

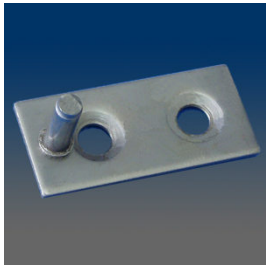


69382

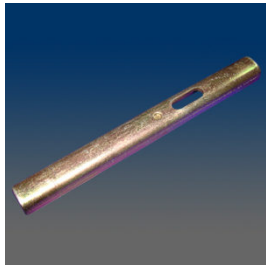
Constant Force Pivot Bar



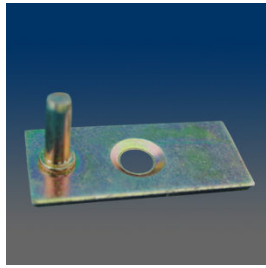
6938
Pivot Bar
Constant Force Balance
Standard Recommended



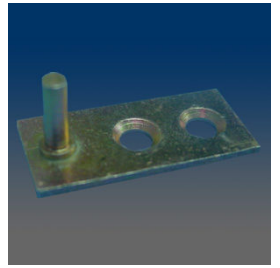
6936
Sash pivot plate, steel, yellow chromated, similar to 6932



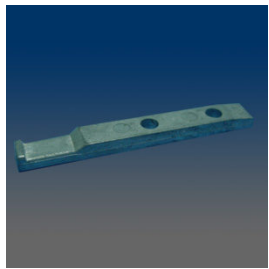
6935
Pivot bar, steel, zinc plated, slotted hole version



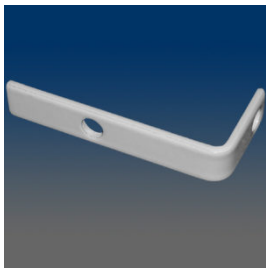
6933
Sash pivot plate, steel, yellow chromated



6932
Sash pivot plate, steel, yellow chromated



6930
Pivot bar, zinc die-cast



6928
"L" shape bracket, steel, powder coating



6927
Pivot bar, steel, zinc plated



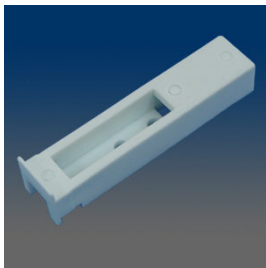
6925
Pivot bar, steel, zinc plated



6924
Pivot bar, steel, zinc plated



6920
Plain aluminum sash angle



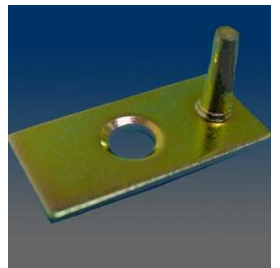
6913
Pivot bar housing, plastic



466048
Bracket-sash pivot



466032
Sash pivot plate

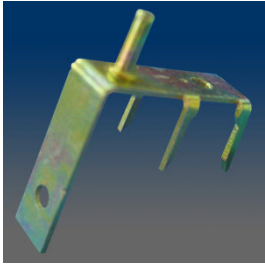


466031A
Sash pivot plate



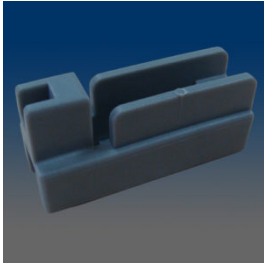
466016

Galvanized drive pivot



466015

Sash pivot plate



2825

Pivot bar bracket