

2023 Product Catalog



**VISION**<sup>®</sup>  
HARDWARE  
*Consistently Reliable*

**We Have Thousands of SKUs  
and Unlimited Ways to Improve Your Products**

(800) 220-4756 • [www.visionhardware.com](http://www.visionhardware.com)

These products may be protected by one or more Vision patents.  
Patent information can be obtained at [www.visionhardware.com/patents](http://www.visionhardware.com/patents)

# MISCELLANEOUS



**7707**

Spring clip, 65MN for galvanized, big, 0.162"x2.166"



**7706**

Spring clip, 65MN for galvanized, small, 0.162"x0.976"



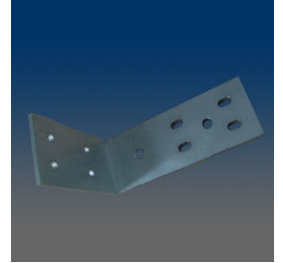
**7705**

Awning clip, with screw installed



**5224**

Screen Clip in Left and Right



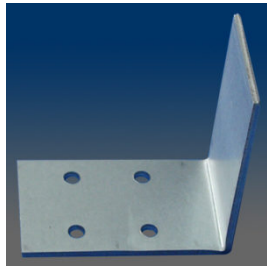
**5223**

Aluminum L Shape Bracket



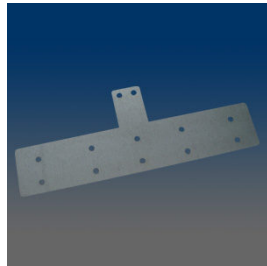
**5222**

Stainless Steel Bracket



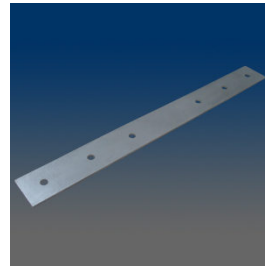
**5216**

(3015005216) PATIO DOOR SHIPPING CLIP



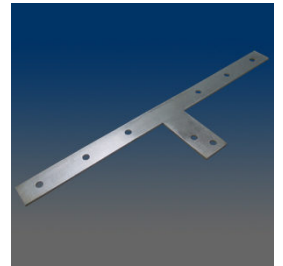
**5215**

Steel plate, .032" thick galvanized steel



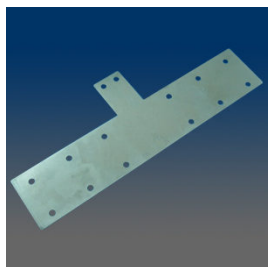
**5214**

OUTSIDE SILL GUSSET PLATE (07-1271A)



**5213**

INSIDE SILL GUSSET PLATE (07-1270A)



**5211**

GUSSETT PLATE FOR COBALT



**5209**

END CAP, GALVANIZED (44PUR117)



**5208**

Steel plate, yellow chromated, .118" thick



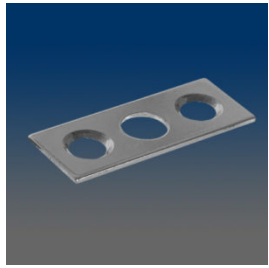
**5205**

Strike plate, stainless steel

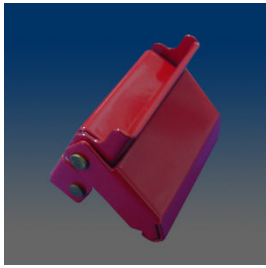


**5204**

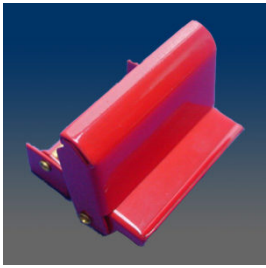
Strike plate, stainless steel



**5203**  
Revised S/F interior corner,  
plastic, black



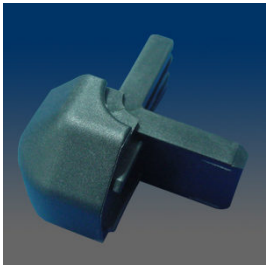
**5201**  
RED CLIP



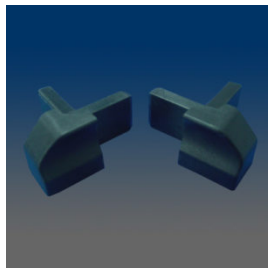
**5200**  
RED CLIP



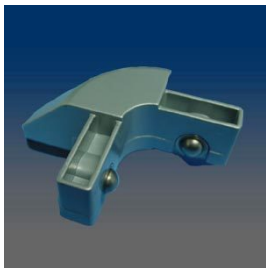
**5123**  
EXTERIOR CORNER FOR  
HARDCOVER, 2", 15%  
GLASS(604-BLACK)



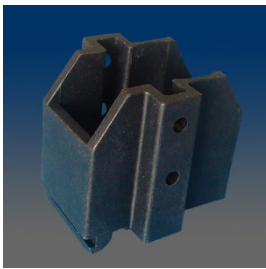
**5122**  
EXTERIOR CORNER FOR  
HARDCOVER



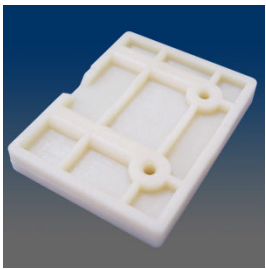
**5121-LR**  
Revised S/F interior corner,  
plastic, black



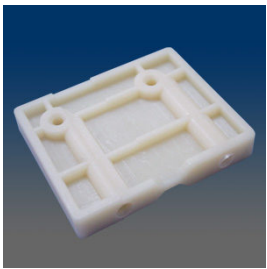
**5120**  
POWDER COATED CORNER



**5108**  
sheer block(604-BLACK)



**5105**  
SCREW BLOCKS, 2.6"



**5104**  
SCREW BLOCKS, 2.4"



**5100**  
ZINC DIE CAST PIN HOUSING



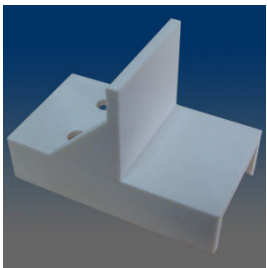
**2SS**  
DOUBLE SKEWERS



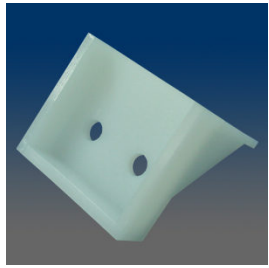
**2997**  
Screw anchor



**2992**  
TAB GUIDE

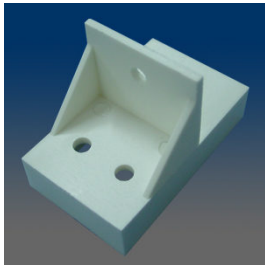


**2991E**  
Dead lite anchor, nylon, screw  
#10107 included



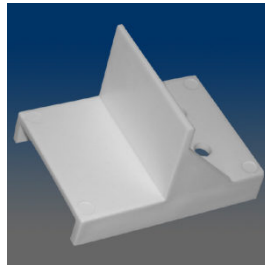
**2991C**

Dead lite anchor, nylon



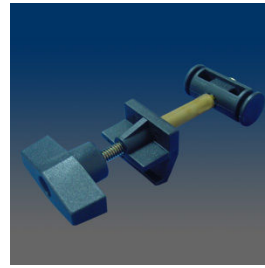
**2991B**

Dead lite anchor, nylon



**2991**

Dead lite anchor, nylon



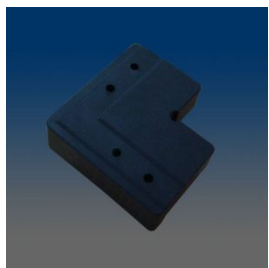
**2502**

Cab clamp assembly, plastic boby assembled with bolt parts



**2500**

Long rear spring clamp assembly, plastic boby assembled with bolt parts



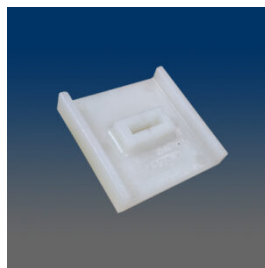
**2424**

Plastic Miter Joint, 2" Colonial corner key



**2423**

Plastic Miter Joint, 1.5" Contemporary corner key



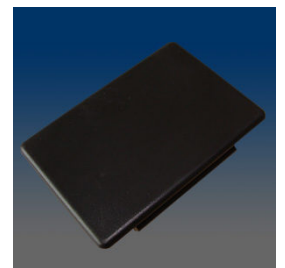
**2422A**

Spring Block



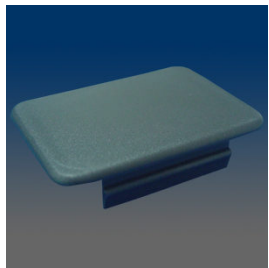
**2421**

Sash stop



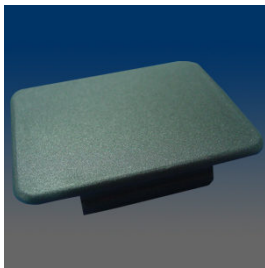
**24084**

LARGE STAKE POCKET



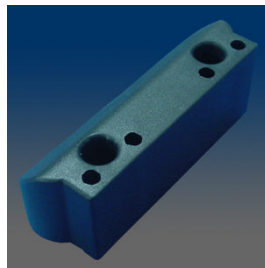
**24083**

SMALL STAKE POCKET



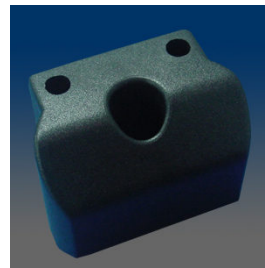
**24082**

MEDIUM STAKE POCKET



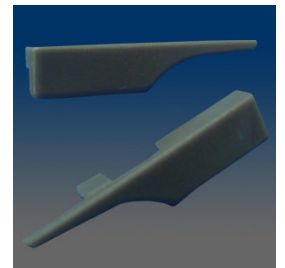
**2405**

Truck Hardware-End Cap



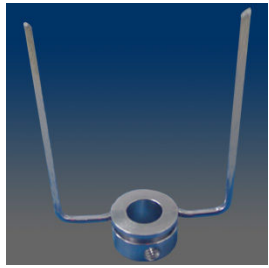
**2404**

Truck Hardware-End Cap



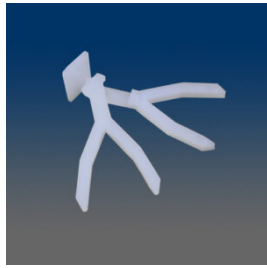
**2262-L.603**

Sill insert end cap, right, material PC



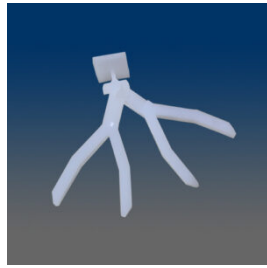
**1SS**

SINGLE SKEWERS



**19902**

Diamond Clip with 9/16" wishbone connector



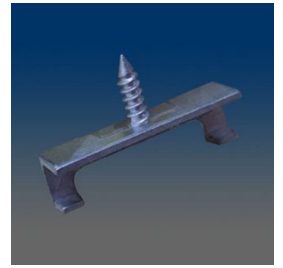
**19901**

Diamond Clip with 5/8" wishbone connector



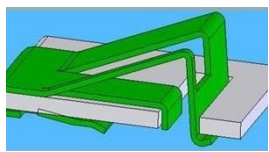
**1982**

5/8 THREAD DECRA CLIP, based on 1972, w/ threaded pole, natural color



**1981**

3/8 THREAD DECRA CLIP, based on 1971, w/ threaded pole, natural color



**1974**

Window installation clip, 65MN with yellow dichromate finish



**1972**

Based on 1962 revised the opening: from 6.7mm to 5.1mm



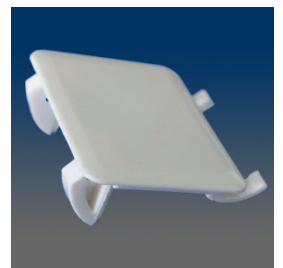
**1971**

Clip



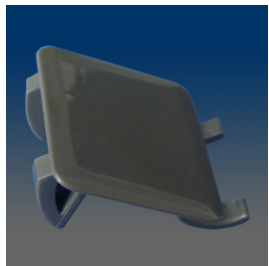
**1970**

Stamped Clip



**1967**

Hole plug, for vinyl thickness from 0.04" to 0.14", anti-UV, similar to 1966



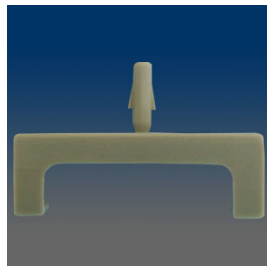
**1966**

Hole plug, for vinyl thickness from 0.04" to 0.14", anti-UV



**1964**

DECRA-LITE GRID CLIP 1"



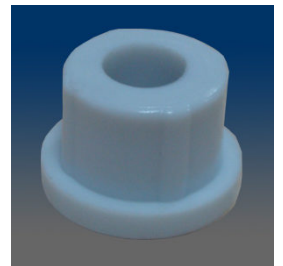
**1962**

DECRA-LITE GRID CLIP 5/8



**1961**

DECRA-LITE GRID CLIP 3/8



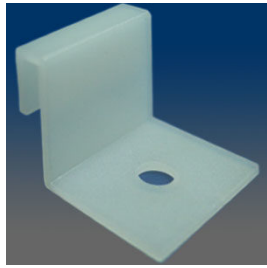
**1960**

BUSHING WITH 0.250" THRU HOLE



**19591**

Meeting rail clip, zinc, powdered, left/right



**1957**

Screw-in sash guide, nylon



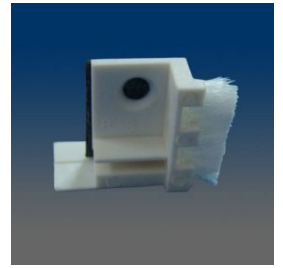
**19557**

Dust plug



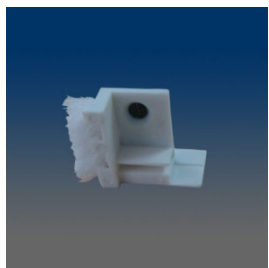
**19556**

Dust plug, #4 hole, left



**19553R**

DUST PATCH PLATE/WITH ADHESIVE RIGHT



**19553L**

DUST PATCH PLATE/WITH ADHESIVE LEFT



**19541.210**

Hole plug, plastic, with extended ribs



**19541.101**

Hole plug, plastic, with extended ribs



**19541**

Hole plug, plastic, with extended ribs



**1954.103**

HOLE PLUG



**1954**

HOLE PLUG



**1952**

Installation hole plug, plastic



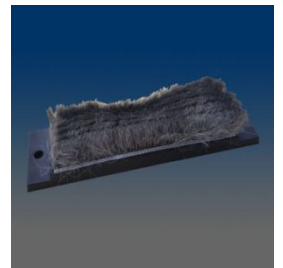
**1949**

Installation hole plug, plastic, based on 1952, the diameter of the hole changed to 3/8" and the snap ramps on both sides have been removed



**1948**

Sill pad with weatherstrip



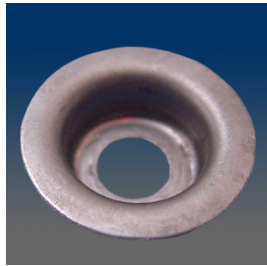
**1947**

Head pad with weatherstrip



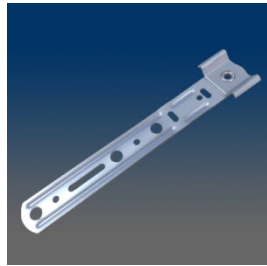
**1946**

Handle cap, left, black, used in pairs



**1615SS**

Cup washer, material is 300 series stainless steel



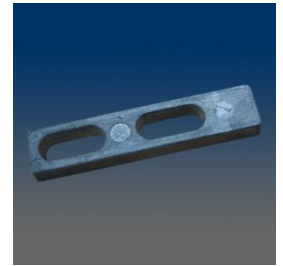
**1560**

Strap Anchor, plate



**1559SS**

CW Upper Sash Bracket



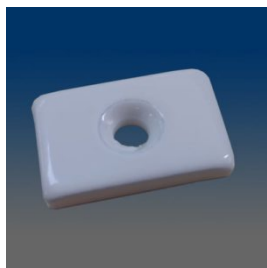
**1558**

Keeper shim



**1554**

Shipping clip for heavy weight window



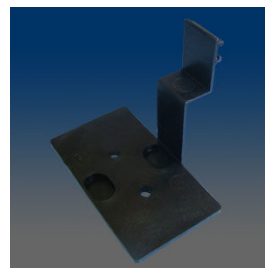
**1553**

Strike plate for 17xx WOCD, w/ 1 pc #4 x 0.375" flat head screw. for protecting the wood rail.



**1552**

Awning shim



**1541**

Fixed panel top bracket, plastic, similar to 1539



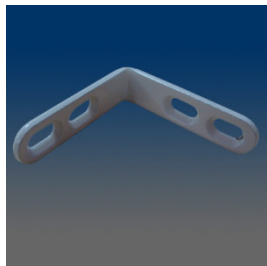
**1539**

Fixed panel top bracket, plastic



**1531A**

Security bracket, steel, white zinc plated, replacing 1531



**1530A-0**

Fixed panel bracket, steel, powder-coating, without screws, replacing 1530



**1530**

Fixed panel bracket, steel, powder-coating, with screws included



**1514**

Shipping clip for light weight window



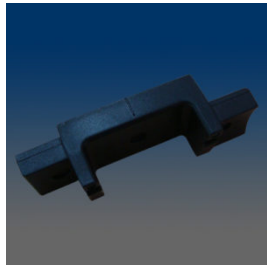
**1507**

Twinbolts Shootplug



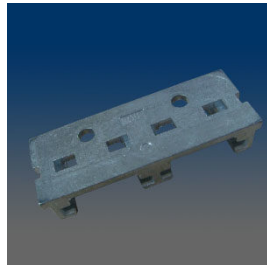
**1506**

Double Shootplug



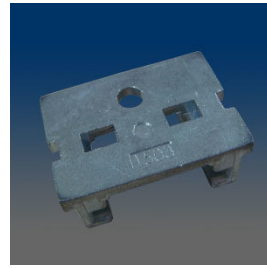
**1505**

Single Shootplug



**1504**

Zinc Double Gib



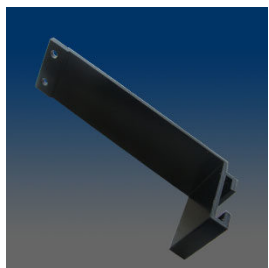
**1503**

Zinc Single Gib



**1502**

Shelf Bracket



**1501**

Shelf Bracket



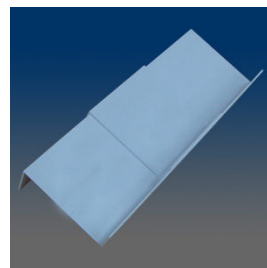
**14933**

Frame Clip



**14931**

Top Clip



**1480**

Sill Pan Connector



**14741**

GT Lock shim, 0.06" thick



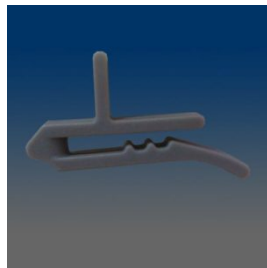
**14740**

GT lock shim, 0.03" thick



**1462**

Lift handle

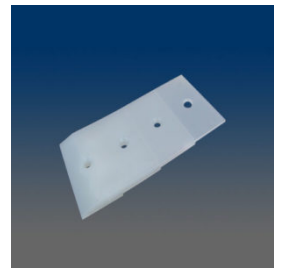


**1461**



**1455**

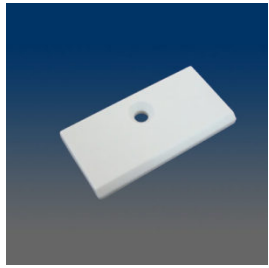
Sliding assembly



**1453**

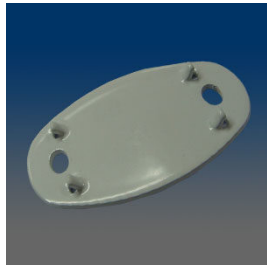
Inner post shim





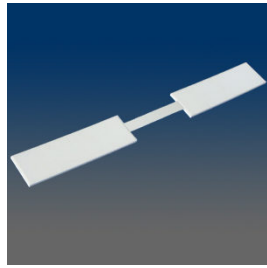
**1452**

Spacer for sash



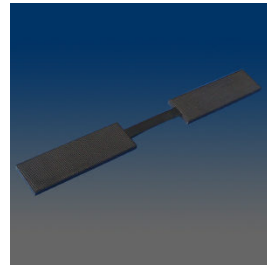
**1451**

Spacer



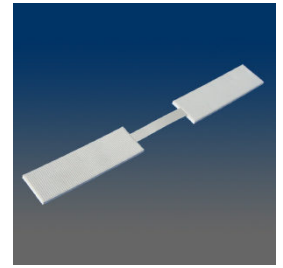
**1438**

Glazing packer corner, flat,  
width 30mm, thickness 3mm



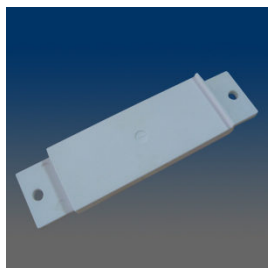
**1437**

Glazing packer corner, flat,  
width 30mm, thickness 5mm



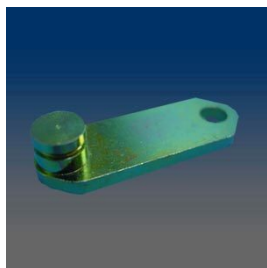
**1436**

Glazing packer corner, flat,  
width 30mm, thickness 4mm



**1424**

Air seal block, PVC



**1419**

Steel connect plate, yellow  
chromated, for RV window



**1413**

Pass through clip, zinc, mill  
finish



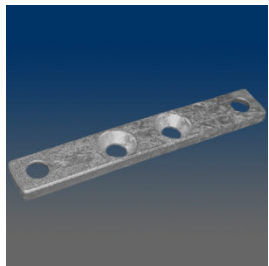
**14104**

Meeting rail block, width 0.320"



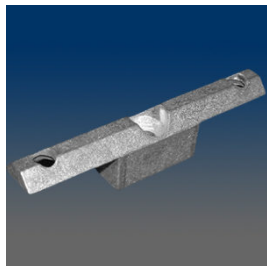
**14103**

Mullion connector, width .515",  
zinc, powder-coating, similar to  
14102



**14102**

Keeper rail adapter, zinc, mill  
finish



**14101**

Meeting rail anchor, zinc, mill  
finish



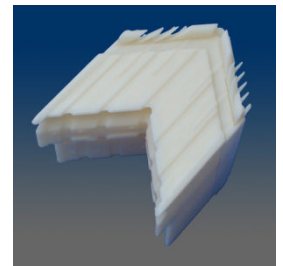
**1410**

Meeting rail anchor, zinc die-  
cast



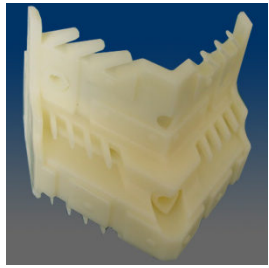
**1126**

Corner, used on sash, double  
hung/ double sliding window,  
apply on CT 606 profile



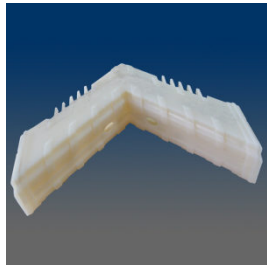
**1122**

Corner, casement/ awning  
picture window, apply on CT22  
profile



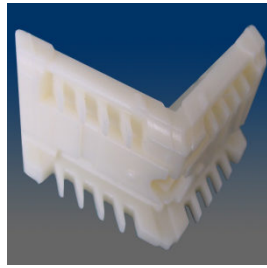
**1121**

Corner, used on sash, casement/ awning window, apply on CT21 profile



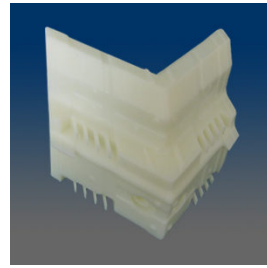
**1119**

Corner, used on sash, apply on sash SV104 of 1100 series window



**1116**

Corner, used on sash, double hung/ double sliding window, apply on CT06 profile



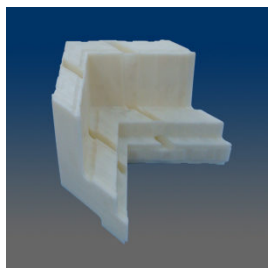
**1115**

Corner, double sliding window, apply on CT505 profiles



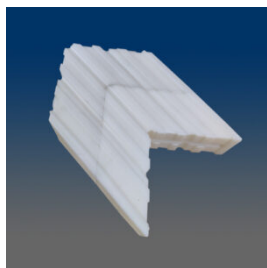
**1114**

Corner, double hung/ picture window, apply on CT504 profile



**1113**

Corner, apply on frame SV100 of 1100 series window



**11121**

Door Corner Key



**1088**

Screen plunger, aluminum shaft assembled with spring



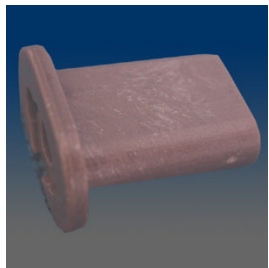
**1082**

Pin with screw, aluminum pin assembled with SS screw



**1018**

Plug, intermediate jamb, plastic



**1017**

Plug, intermediate jamb, plastic



**10040**

SCREW