

2025 Product Catalog

BALANCE HARDWARE | CASEMENT HARDWARE | END RAIL CAPS | HOPPER HARDWARE | JAMB ADJUSTERS | KEEPERS | LOCK HARDWARE

VOLUME 1



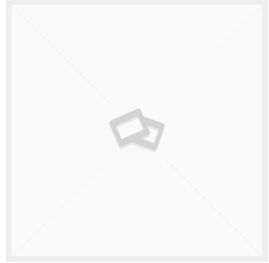
VISION
HARDWARE
Consistently Reliable

**Hundreds of Parts
and Unlimited Ways to Improve Your Products**

(800) 220-4756 • www.visionhardware.com

COPYRIGHT © 2025 VISION HARDWARE. ALL RIGHTS RESERVED.
THESE PRODUCTS MAY BE PROTECTED BY ONE OR MORE VISION PATENTS. PATENT
INFORMATION CAN BE OBTAINED AT WWW.VISIONHARDWARE.COM/PATENTS

KEEPERS



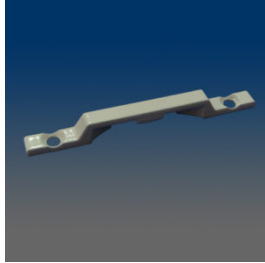
CONCEPT 3424

Composite sash keeper, surface mount, 2.25" C/L, rounded holes, match with 31811 lock



9397

Keeper used with 360/684

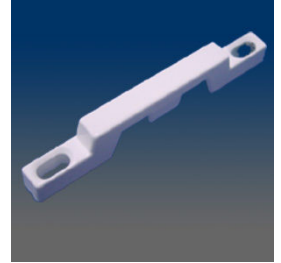


9395

Top mount keeper, 2.062" C/L, open back, match with 9706 lock

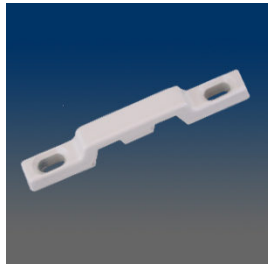


9392



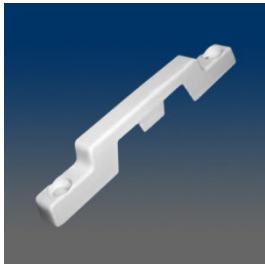
9389

Keeper, sash, surface mount, #6 screw, 2.25" C/L, open back, material: zinc alloy



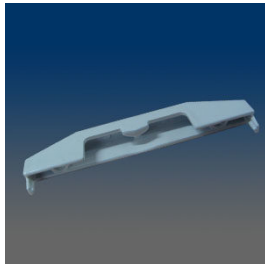
9388

Keeper, sash, surface mount, #6 screw, 2.062" C/L, closed back, material: zinc alloy



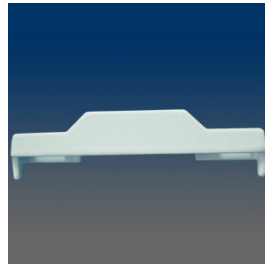
9387

Top mount keeper, 2.25" C/L, open back



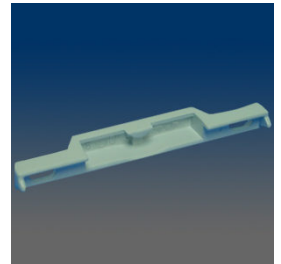
9386B

Top Mount Keeper, 2.062" C/L



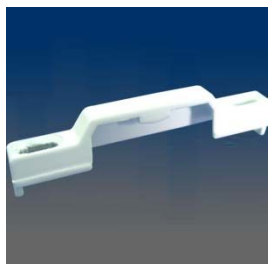
9385

Keeper, sash, surface mount, #5 screw, 2.126" C/L, closed back, material: zinc alloy, pronged



9384

Keeper, sash, surface mount, #6 screw, 2.25" C/L, closed back, material: zinc alloy, pronged, match with 690 series



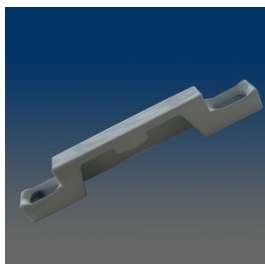
9383

Keeper, sash, surface mount, #5 screw, 2.22" C/L, closed back, material: zinc alloy, pronged



9382

Keeper, sash, surface mount, #6 screw, 2.25" C/L, closed back, material: zinc alloy, match with 9280 lock



9381

Top Mount Keeper, 2.25" C/L



9373

Recessed mounted keeper, 1.622 C/L, match with 9825 lock



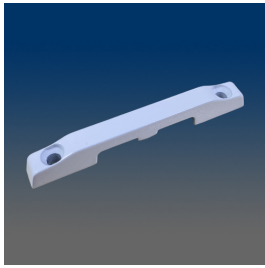
9371

"Keeper, sash, surface mount, #6 screw, 2.062" C/L, closed back, material: zinc alloy match with locks 9420 and 3420"



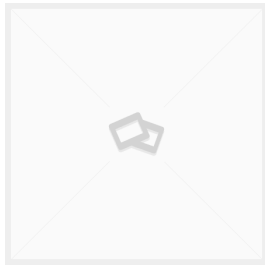
9370

Keeper, sash, recessed surface mount, #6 screw, 1.625" C/L, material: zinc alloy



9367

keeper



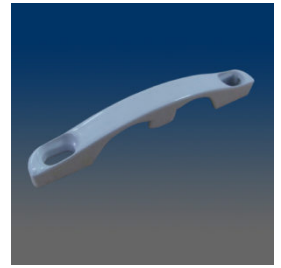
9364A

Face Mount Keeper, 1.418" C/L Slotter



9364

Face Mount Keeper, 1.418" C/L



9362

Top mount keeper, 2.126" C/L, closed back, elongated hole, match with 600 series lock



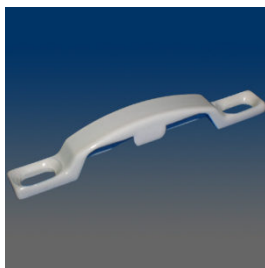
9360

Keeper, sash, surface mount, based on 9353, but with closed back and round holes, 2.062" C/L, material: zinc alloy



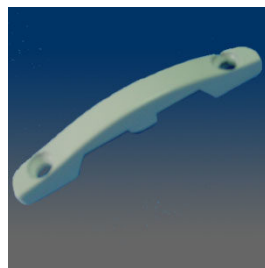
9359

Keeper, sash, surface mount, #6 screw, 2.126" C/L, open back, material: zinc alloy, match with both 611SL (non-hooded)



9358

Keeper, sash, surface mount, for 600 series hooded lock, #6 screw, 2.029" C/L, closed back, material: zinc alloy



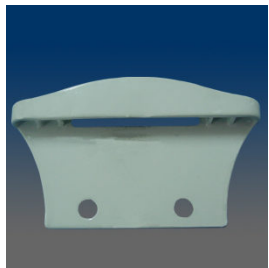
9357

Keeper, sash, surface mount, for 600 series hooded lock, #6 screw, 2.062" C/L, closed back, material: zinc alloy



9356A

Keeper, sash, surface mount, for non-hooded 600 series hooded lock, #6 screw, 2.062" C/L, closed back, material: zinc alloy



9354

Keeper, sash, face mount, for 600 series non-hooded lock, #8 screw, 1" C/L, material: zinc alloy



9353

Keeper, sash, surface mount, for 600 series non-hooded lock, #6 screw, 2.126" C/L, open back, material: zinc alloy



9352

Keeper, sash, recessed surface mount, for 600 series hooded lock, 2.062" C/L, #6 screw-base and #4 screw-head, material: zinc alloy



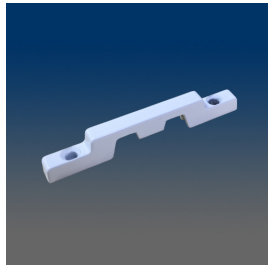
9351

Keeper, sash, surface mount, "seasure", for 600 series non-hooded lock, #8 screw, 2.062" C/L, material: zinc alloy and Mn



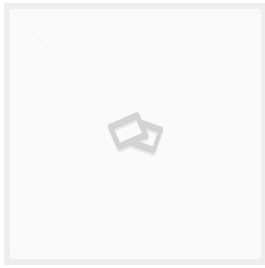
9350

Keeper, sash, recessed surface mount, for 600 series hooded lock, #8 screw, 2.079" C/L, material: zinc alloy



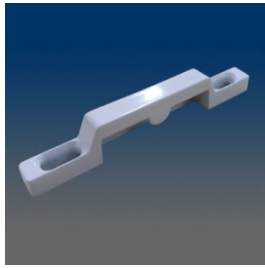
9349

Zinc keeper.



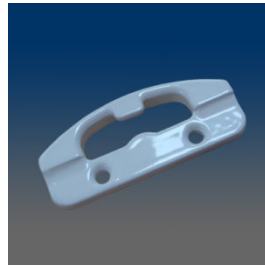
9347

Surface mounted Keeper



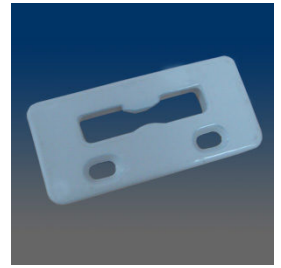
9346

Keeper, sash, surface mount, #6 screw, 2.085" C/L, closed back, material: zinc alloy



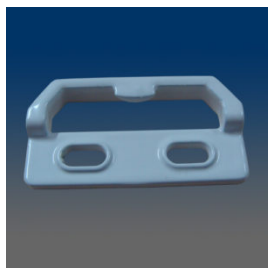
9345

Keeper, match with 619 lock



9344

Face Mount Keeper, 1.15"C/L



9342

Face mount keeper, 0.75"C/L, match with 9720 lock



9341

Face mount keeper, 1.15"C/L, match with 4430 lock



9340

Keeper, sash, surface mount, 2.000" C/L, closed back, #8 screw, similar to 9310, match with lock 4420, zinc alloy



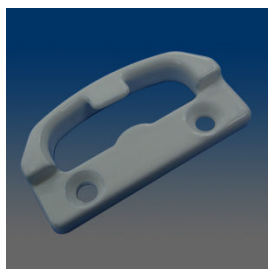
9339

Keeper, sash, face mount, 1.000" C/L, match with 3622, zinc, strength version of 9337, zinc alloy



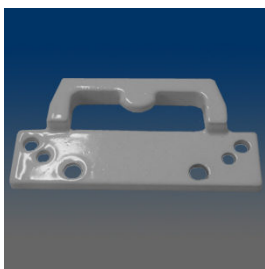
9338

Face mount keeper, 1" C/L, similar to 9321



9337

Keeper, sash, face mount, 1" C/L, similar with 9336, match with 3620, material: zinc alloy



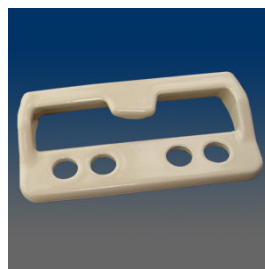
9335

Keeper, sash, face mount, match with 9227, material: zinc alloy



9334

Keeper, sash, face mount, two sets of screw holes, match with 9730, material: zinc alloy



9333

Keeper, sash, face mount, two sets of screw holes, match with 9227, material: zinc alloy



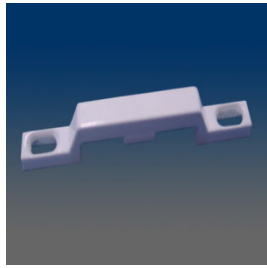
9331A

Face mounted keeper



9331

Keeper, sash, face mount, #8 screw, 1" C/L, match with 611, material: zinc alloy



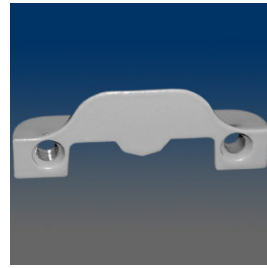
9330

Top mount keeper, 2.25" C/L, closed back, match with 9730 lock



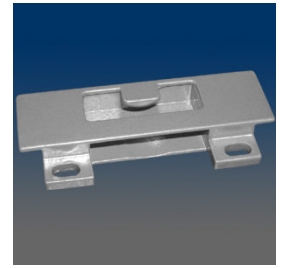
9328

Keeper, sash, face mount, #5 screw, 1.598" C/L, material: zinc alloy



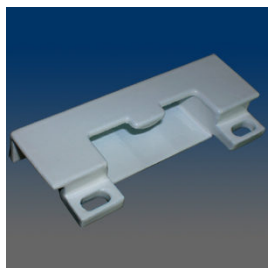
9327

Keeper, sash, recessed mount, #8 screw, 1.655" C/L, material: zinc alloy



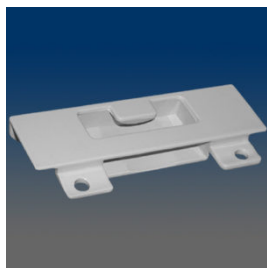
9326

Keeper, sash, face mount, #5 screw, 1.556" C/L, material: zinc alloy



9325

Keeper, sash, face mount, #5 screw, 1.681" C/L, material: zinc alloy



9324A

Face mount keeper, 1.614" C/L, match with 9820 lock



9323

Keeper, sash, face mount, #6 screw, 1.65" C/L, open back, material: zinc alloy



9322

Keeper, sash, face mount, #5 screw, 1.87" C/L, material: zinc alloy



9321

Keeper, sash, face mount, #6 screw, 1" C/L, material: zinc alloy



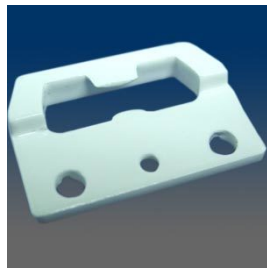
9319

Keeper, sash, surface mount, 2.062" C/L, open back, match with 9706 sash lock, material: zinc alloy



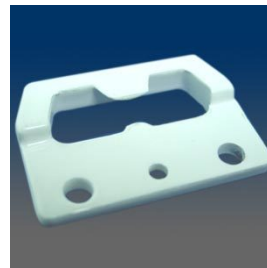
9318

Keeper, sash, face mount, #6 screw, 1" C/L, material: zinc alloy



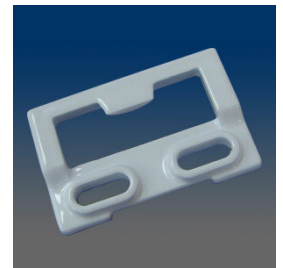
9317

Face mount keeper, 1" C/L



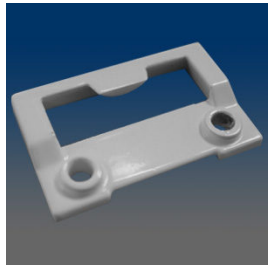
9316

Keeper, sash, face mount, #8 screw, 1" C/L, material: zinc alloy



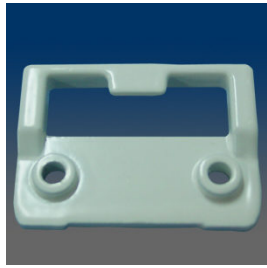
9315A

Face Mount Keeper with slotted hole, 0.749" C/L



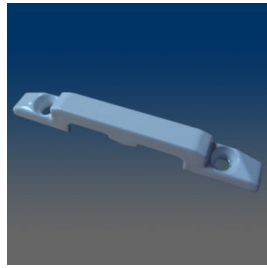
9315

Keeper, sash, face mount, #6 screw, 1" C/L, material: zinc alloy



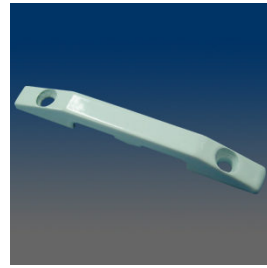
9314

Keeper, sash, face mount, #6 screw, 1" C/L, match with 9820 sash lock, material: zinc alloy



9313B

Keeper with angled screw holes



9313

Keeper, sash, surface mount, #6 screw, 2.062" C/L, closed back, match with 9721 sash lock, material: zinc alloy



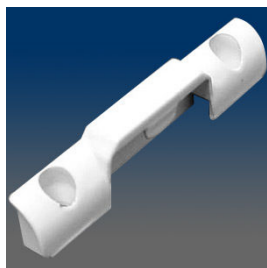
9312

Keeper, sash, face mount, #6 screw, 1" C/L, match 9710, material: zinc alloy



9311

Keeper, sash, surface mount, #6 screw, 2.062" C/L, closed back, material: zinc alloy



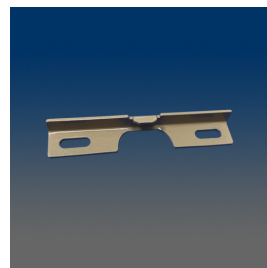
9310

Keeper, sash, surface mount, #8 screw, 2" C/L, closed back, match with 9205 sash lock, material: zinc alloy



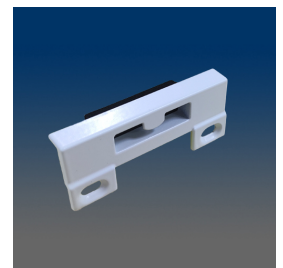
8597

top mount keeper, GT style



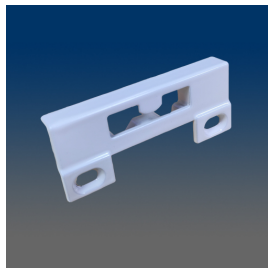
8596

face mount keeper, stainless steel



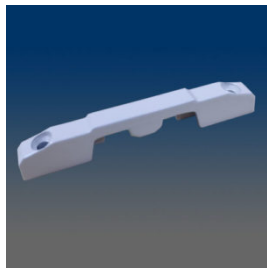
8595A

Keeper with gasket.



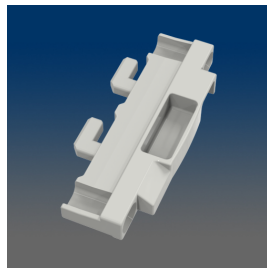
8595

keeper



8594

Keeper for LPI Locks



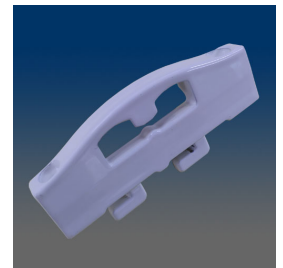
8590

keeper, zinc w/ hooks for impact, works w/ 12017 & 12040 auto locks



8589A

keeper, slotted version of 8589



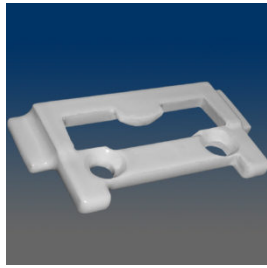
8589

keeper, zinc, GT style w/ hooks for impact



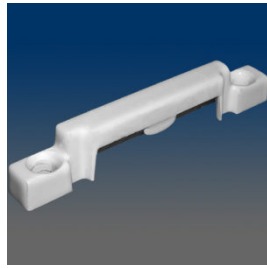
8588A

Zinc Keeper with angled mounting holes.



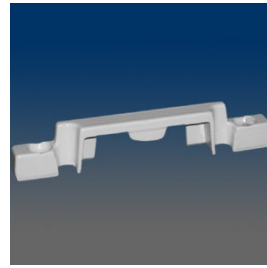
8587

Keeper, sash, face mount, .866\"/>



8565

Keeper, sash, surface mount, #8 screw, 2.062\"/>



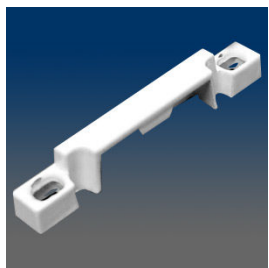
8564

Keeper, sash, surface mount, #6 screw, 2.062\"/>



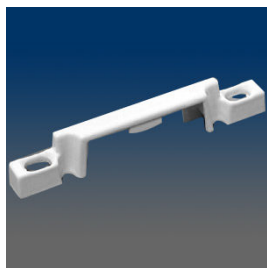
8563

Keeper, sash, surface mount, 2.062\"/>



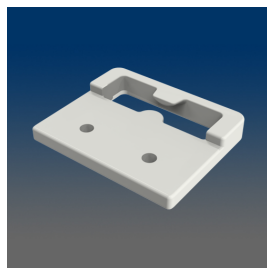
8562

Keeper, sash, surface mount, #6 screw, 2.062\"/>



8561

Keeper, sash, surface mount, 2.062\"/>



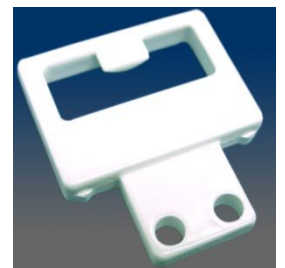
8528

keeper



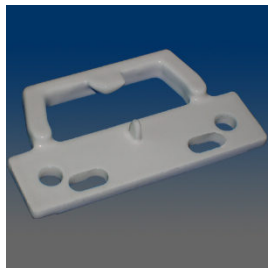
8527

Face mount keeper, 1\"/>



8526

Keeper, sash, face mount, #10 screw, .44\"/>



8525

Keeper, sash, face mount, 1\"/>



8524

Keeper, sash, face mount, #10 screw, .43\"/>



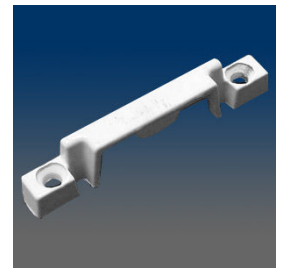
8522

Keeper, sash, face mount, #10 screw, .88\"/>



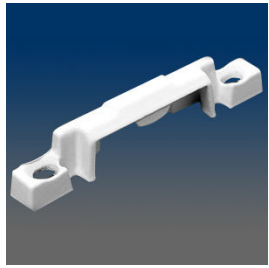
8521

Keeper, sash, face mount, #6 screw, 1\"/>



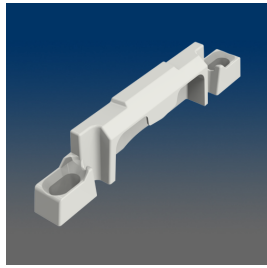
8504

Keeper, sash, surface mount, #6 screw, 2.062\"/>



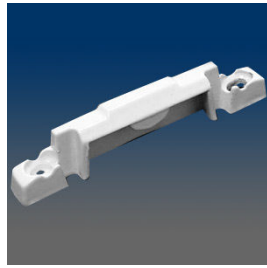
8503

Keeper, sash, surface mount, #6 screw, 2.062" C/L, open back, material: zinc alloy



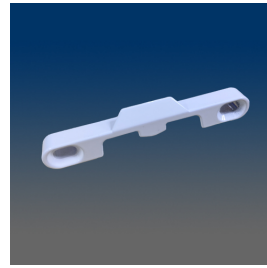
8500A

keeper



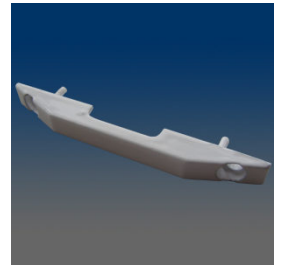
8500

Keeper, sash, surface mount, #5 screw, 2.062" C/L, closed back, material: zinc alloy



8486

keeper



8427

Keeper, sash, surface mount



8426

Keeper, sash, surface mount, #6 screw, 2.181" C/L, closed back, material: zinc alloy, match with 3424



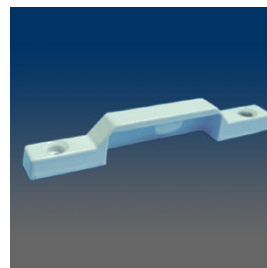
8425

Keeper, sash, surface mount, #6 screw, 2.181" C/L, closed back, material: zinc alloy



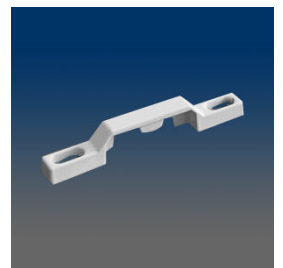
8424

Keeper, sash, face mount, #5 screw, .433" C/L, material: zinc alloy



8423

Keeper, sash, surface mount, #8 screw, 2.25" C/L, closed back, material: zinc alloy



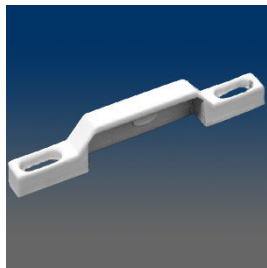
8422

Keeper, sash, surface mount, #6 screw, 2.22" C/L, open back, material: zinc alloy



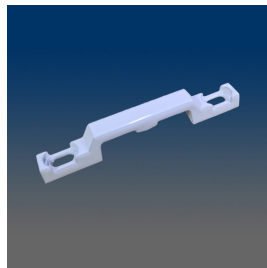
8421

Keeper, sash, face mount, #6 screw, 1" C/L, material: zinc alloy



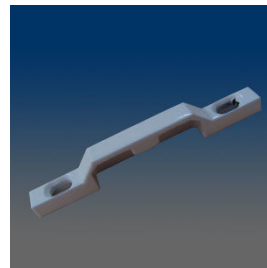
8420

Keeper, sash, surface mount and #8 screw, 2.205" C/L, closed back, material: zinc alloy



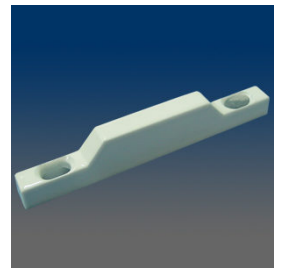
8413

Sash Lock Keeper



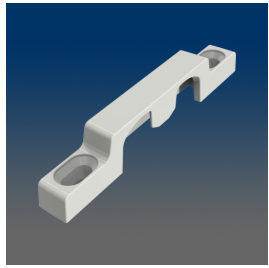
8411

Closed Back Face Mount Keeper, 2.062" C/L



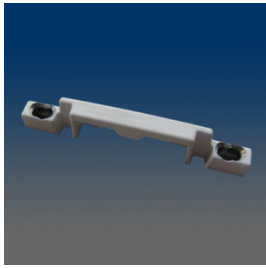
8410

Keeper, sash, surface mount, #6 screw, 2.062" C/L, closed back, material: zinc alloy



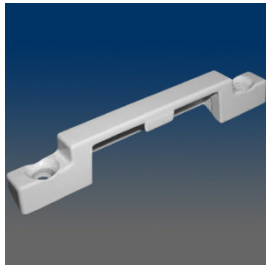
8388

keeper



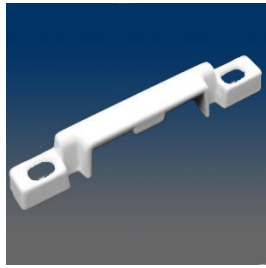
8384

Keeper, sash, surface mount, #6 screw, elongated screw hole based on 8380, open back, match with 3390GK, material: zinc alloy, C/L 2.311"



8382

Keeper, sash, surface mount, #8 screw, 2.25" C/L, closed back, beveled bottom, material: zinc alloy



8381

Keeper, sash, surface mount, #8 screw, 2.25" C/L, closed back, material: zinc alloy



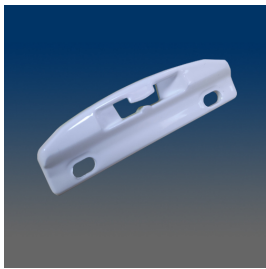
8380

Keeper, sash, surface mount, #6 screw, 2.25" C/L, open back, material: zinc alloy



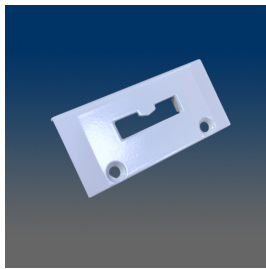
8372

Front Mounted keeper, 0.748" center to center, 0.291" tooth



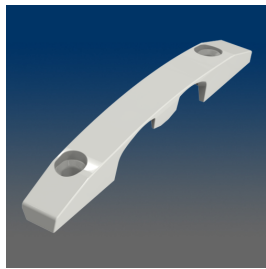
8371

keeper



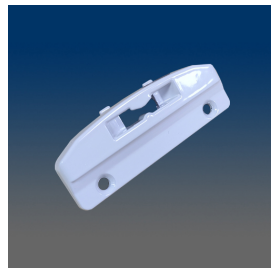
8334A

face mount keeper



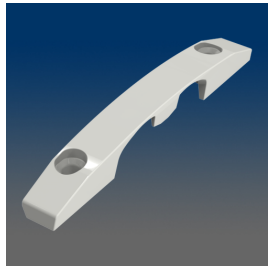
8333

keeper



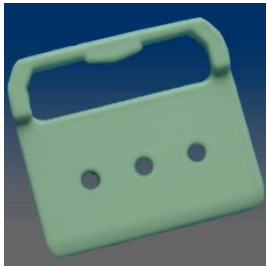
8332A

keeper



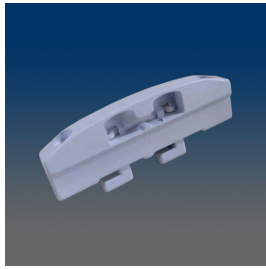
8300A

keeper



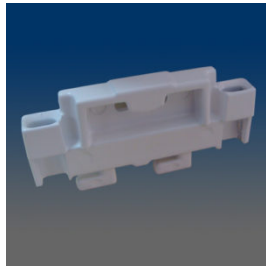
8299

Keeper, sash, face mount, #5 screw, .77" C/L, material: zinc alloy



8298

keeper, zinc, LPC style w/ hooks for impact



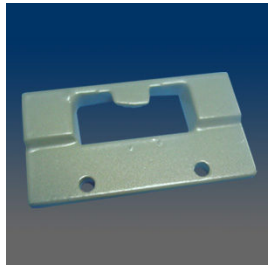
8297

Keeper with open back and with hook legs

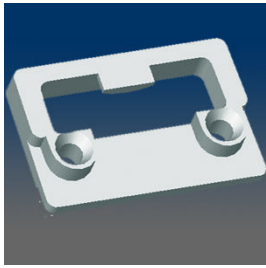


8296

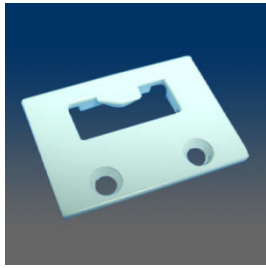
Keeper, sash, surface mount, #6 screw, 2.25" C/L, open back, material: zinc alloy



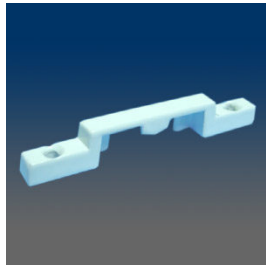
8295
Keeper, sash, face mount, #4 screw, 1" C/L, material: zinc alloy



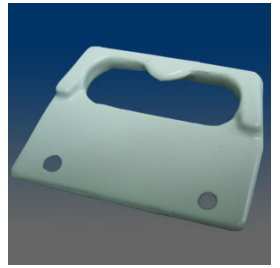
8293
SASH KEEPER,FACE MOUNT,1.00" C/L,#6 SCREW(EURO WHITE)



8292
Keeper, sash, face mount, #8 screw, .866" C/L, material: zinc alloy



8291
Keeper, sash, surface mount, #5 screw, 2.22" C/L, open back, material: zinc alloy



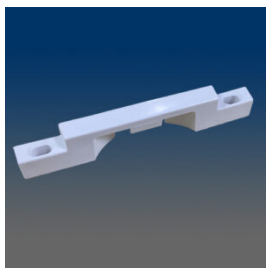
8290
SASH KEEPER,FACE MOUNT,1" C/L,#4 SCREW



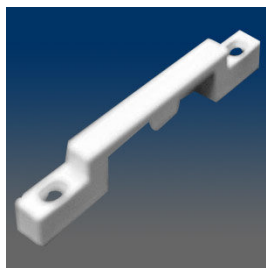
8289
Keeper, sash, face mount, #5 screw, .77" C/L, material: zinc alloy



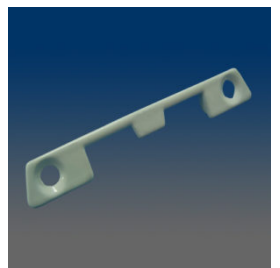
8288
Keeper, sash, surface mount, #6 screw, 2.25" C/L, with pegs at the bottom, open back, material: zinc alloy



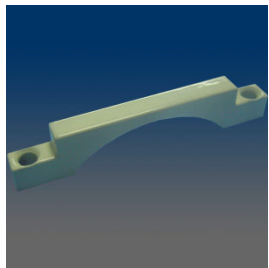
82871
Composite Keeper, compatible with Lock 32801



8287
Keeper, sash, surface mount, #6 screw, 2.25" C/L, open back, material: zinc alloy



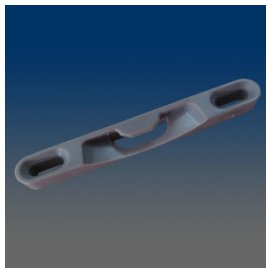
8286
Face mount keeper,2.25" C/L



8285
Keeper, sash, surface mount, #6 screw, 2.25" C/L, open back, material: zinc alloy



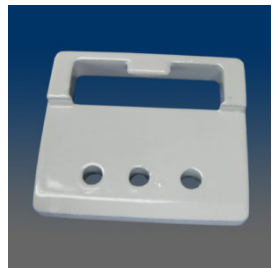
8284
Keeper, sash, surface mount, #6 screw, 2.25" C/L, closed back, material: zinc alloy



82831
Recessed Composite Keeper, 2.141" C/L



8283
Recessed keeper, 2.040" C/L

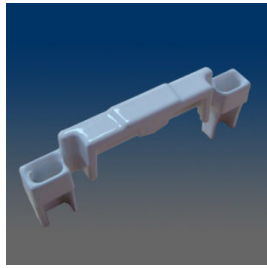


8281
Face mount keeper, #6 screw used



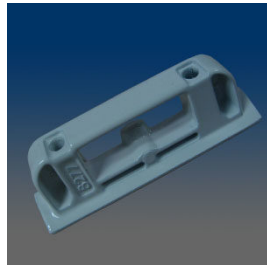
8280

Keeper, sash, surface mount, #6 screw, 2.25" C/L, open back, material: zinc alloy



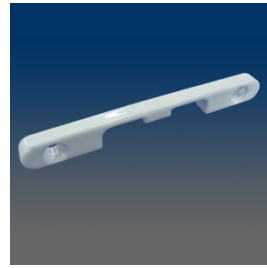
8279

keeper, zinc, w/ legs for grooved rail



8277

Face Mount Keeper, 1.378" C/L



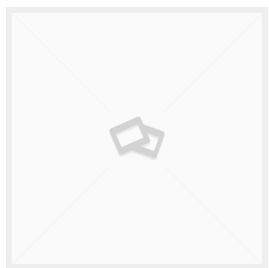
8275

Recessed Keeper, 2.205" C/L

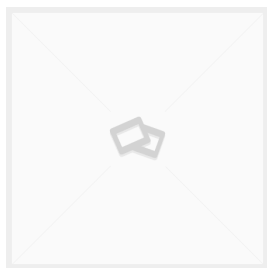


82741

Top mount keeper, 2.25" C/L, 0.375" thickness, closed back



82731A

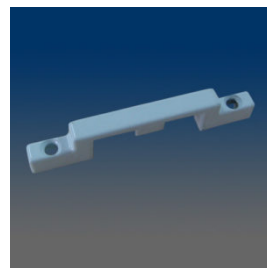


82731-SB



82731

Top mount keeper, 2.25" C/L, 0.285" thickness, closed back,



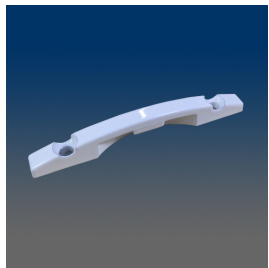
8272

Keeper with closed back



8271

Face mount keeper, 1.375" C/L



8268C

keeper



8268A

keeper, LPC, w/ pegs for grooved profile



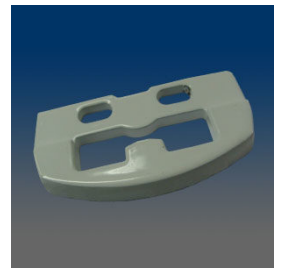
8268

top mount keeper, LPC style



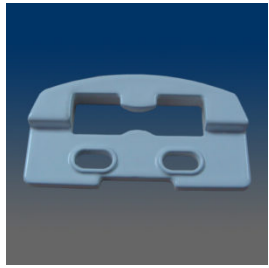
8267

Face Mount Keeper, 1.181" C/L

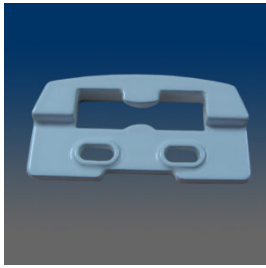


8266

Face Mount Keeper, 0.75" C/L



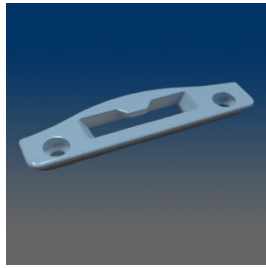
8264
Face mount keeper, 0.75" C/L,
match with 3263L&R lock



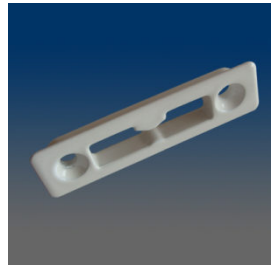
8263
Face mount keeper, 0.75" C/L,
match with 3262L&R lock



8262
Keeper, sash, surface mount,
#10 screw, 2.232" C/L,
material: zinc alloy



8261
Face mount keeper, 2.062" C/L,
match with 3261L&R, 3215
locks



8256
Recessed facemount keeper
that matches with 3271-L&R or
3273



8255
Keeper, surface mount, C/L
2.062, #6 screw used, matches
with 3253A-L&R



8254
Top mounted keeper that is a
match with 3252-L&R



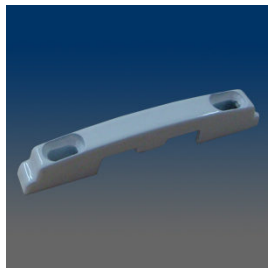
8253
Keeper, sash, face mount, zinc,
match with 3253A-L&R lock



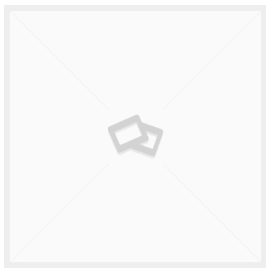
8252
Face mount keeper, .750" C/L,
zinc, match with 3253L&R lock



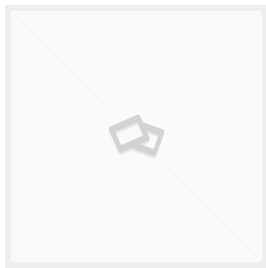
8251
Top mount keeper, 1.875" C/L,
zinc, match with 3252L&R lock



8250
Top Mount Keeper, 1.811" C/L



8247
8247



8246
8246



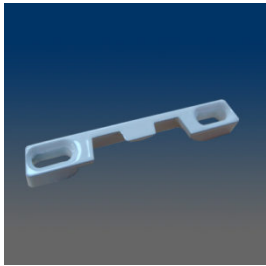
8243
Face Mount Impact Keeper,
1.575" C/L



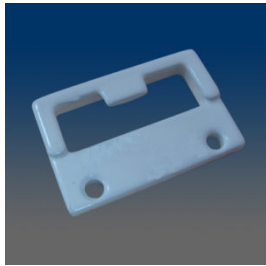
8239
Top Mount Keeper, 2.185" C/L



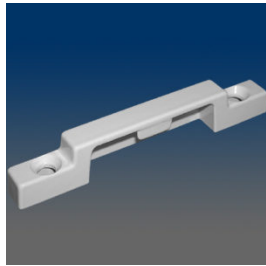
8238
Top Mount Open Back Keeper,
2.205\"/>



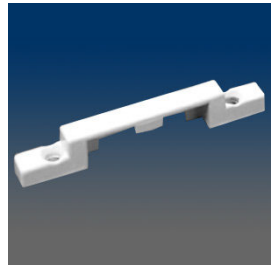
8232
Keeper with open back



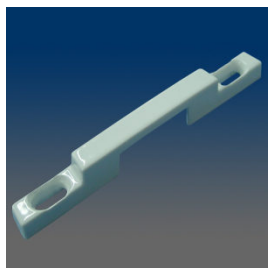
8231
Top mount keeper, 1.000\"/>



8229
Keeper, sash, surface mount,
2.11\"/>



8227
Keeper, sash, surface mount,
#6 screw, 2.062\"/>



8226SL
Keeper, sash, surface mount,
2.169\"/>



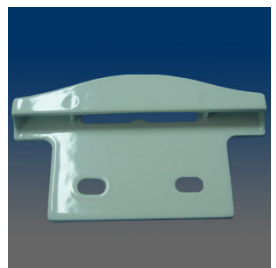
8226
Keeper, sash, surface mount,
#6 screw, 2.175\"/>



8224
Keeper, sash, surface mount,
#6 screw, 2.062\"/>



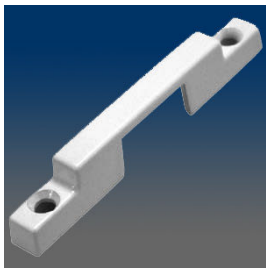
8223
Keeper, sash, face mount, #6
screw, 1\"/>



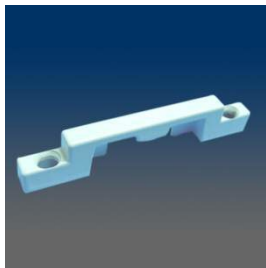
8222
Keeper, sash, face mount, #6
screw, 1\"/>



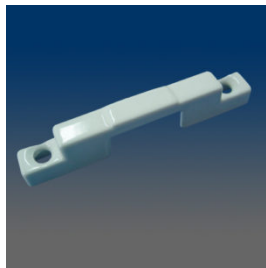
8221
Keeper, sash, face mount, #6
screw, 1\"/>



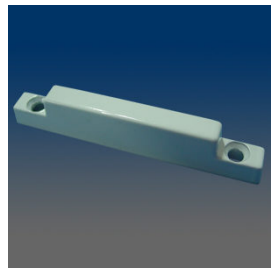
8220
Keeper, sash, surface mount,
#8 screw, 2.213\"/>



8219
Keeper, sash, surface mount,
#6 screw, 2.062\"/>



8217
Top mount keeper, 2.062\"/>

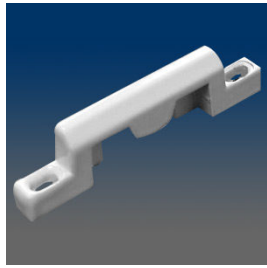


8216
Keeper, sash, surface mount,
#6 screw, 2.062\"/>



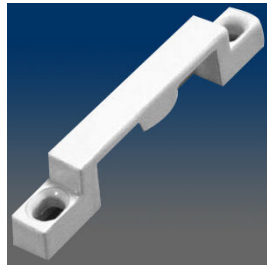
8214

Keeper, sash, face mount, #8 screw, 1" C/L, material: zinc alloy



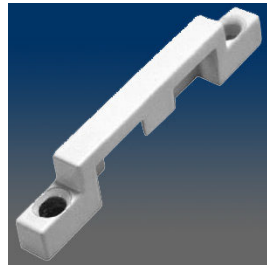
8213

Keeper, sash, surface mount, #5 screw, 2.062" C/L, open back, material: zinc alloy



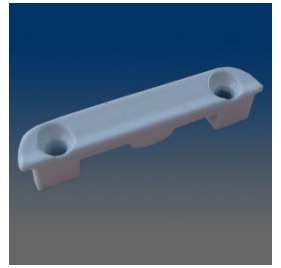
8212

Keeper, sash, surface mount, #8 screw, 2.091" C/L, open back, material: zinc alloy



8211

Keeper, sash, surface mount, #6 screw, 2.062" C/L, open back, material: zinc alloy



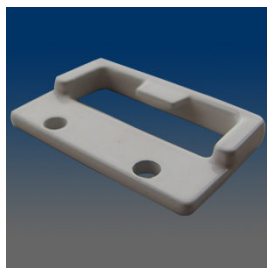
8210

Recessed Keeper 1.624" CL



8209

Keeper, sash, face mount, #6 screw, .744" C/L, increased the thickness of 8208, material: zinc alloy



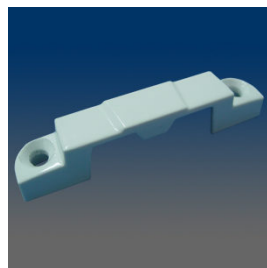
8208

Keeper, sash, face mount, #6 screw, .744" C/L, keep bottom pair of holes of 8202, material: zinc alloy



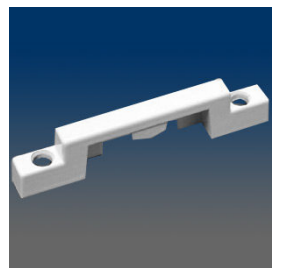
8207

Keeper, sash, face mount, #6 screw, 1" C/L, taller than 8202, and has different hole position, material: zinc alloy



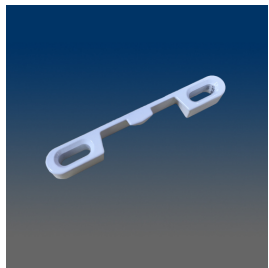
8206

Keeper, sash, surface mount, #6 screw, 2.062" C/L, closed back, similar to 8201, material: zinc alloy



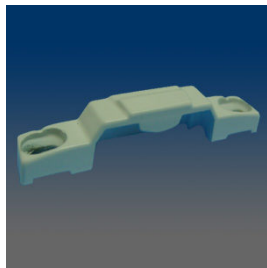
8205

Keeper, sash, surface mount, #6 screw, 2.062" C/L, open back, material: zinc alloy



8204

keeper



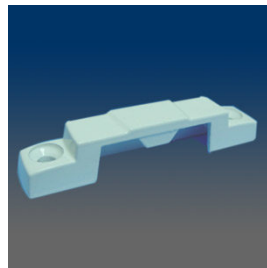
8203

Keeper, sash, surface mount, #6 screw, 2.062" C/L, closed back, material: zinc alloy



8202

Keeper, sash, face mount, #6 screw, 1" C/L, material: zinc alloy



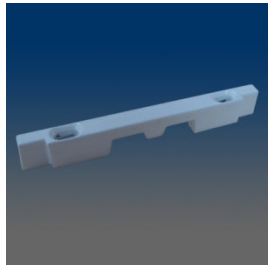
8201

Keeper, sash, surface mount, #6 screw, 2.062" C/L, match with 3212 lock, closed back, material: zinc alloy



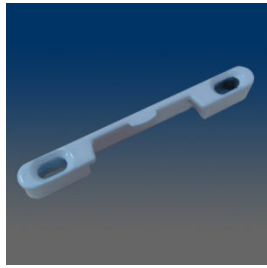
8200

Keeper, face mount, .85" C/L



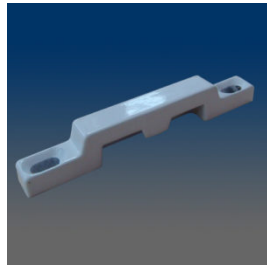
8198

Recessed mounted keeper, 2.250" C/L, match with 3207, 3208 locks



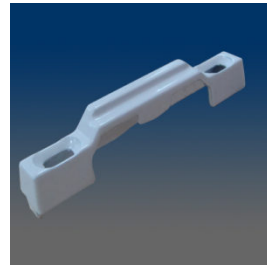
8197

Keeper, sash, recessed, 2.062" C/L, match with 3207, 3207PRM, 3207SMT, 3208, 3208PRM, 3208SMT



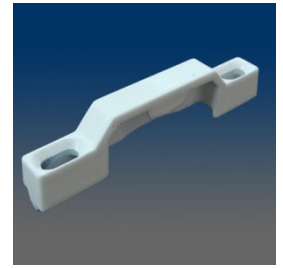
8196

Top mount keeper, 2.250" C/L, closed back, slotted holes match with 3207, 3208 locks



8195

Top mount keeper, 2.062" C/L, closed back, slotted holes & pronged, match with 617 lock



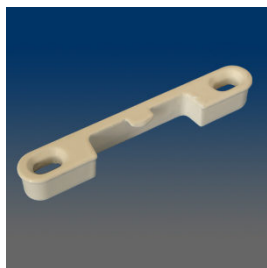
8194

Top mount keeper, 2.062" C/L, closed back & slotted holes match with 616 lock



8188

Keeper, face mount, 1.000" C/L, wall thickness of 0.06", stainless steel, powder coated, similar with 8184, match with 92205 lock



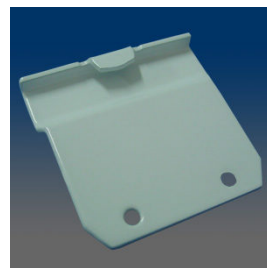
8187

Keeper, face mount, 2.244" C/L, match with 9812, material: zinc alloy



8186

Keeper, sash, face mount, #6 screw, 2.000" C/L, with same appearance as 8183 but has round holes, material: zinc alloy



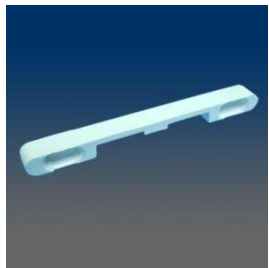
8185

Keeper, face mount, .85" C/L, rounded holes, material SS304



8184

Keeper, face mount, .846" C/L, rounded holes, material SS304



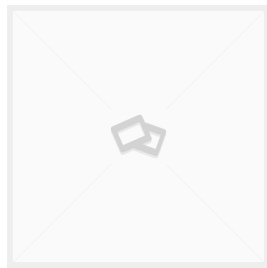
8183

Keeper, sash, face mount, #6 screw, 2.062" C/L, slotted holes, match with 3161 lock, material: zinc alloy



81811

Composite sash keeper, surface mount, 2.25" C/L, rounded holes, match with 31811 lock

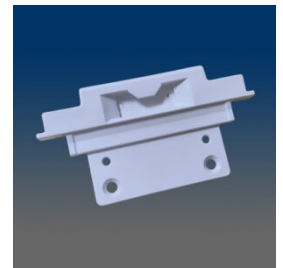


81802A



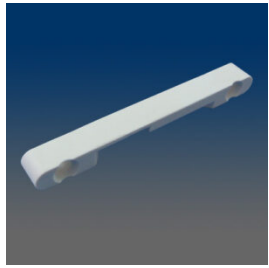
81801

Face mount keeper, 1.004 C/L, round holes, match with 92271A and 9229

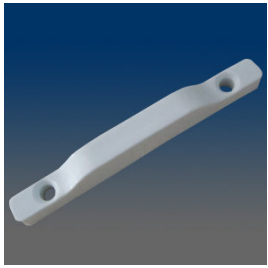


4541

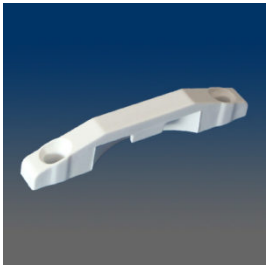
Composite keeper used with 4323 and 3422.



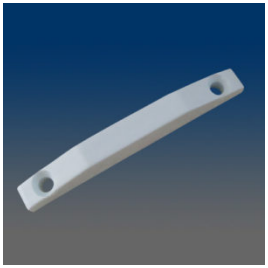
4540
keeper, composite, recessed



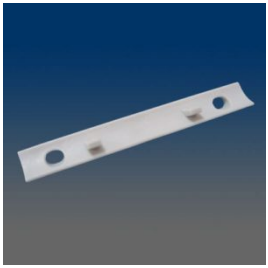
4530
Composite keeper, 2.062" C/L, rounded holes, surface mount, match with 4310, 4320 locks



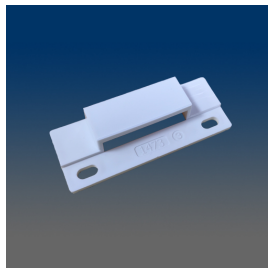
4524



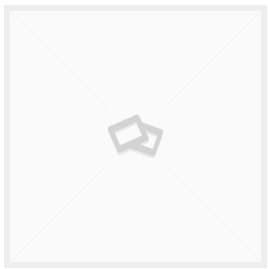
4520
Top mount keeper, 2.062" C/L, closed back



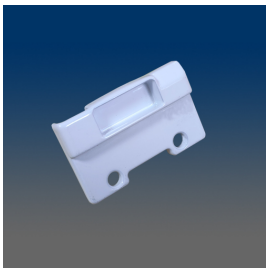
1511
keeper base adapter, plastic, works with 9313



1473-SB
keeper shim, plastic, used with 8595



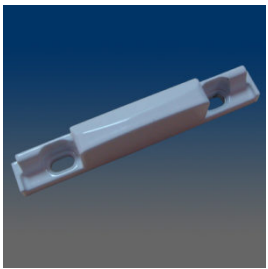
13034
Centerline 1.399



13033A
auto keeper



13033



13032
keeper for auto lock 12032



13013
keeper for auto lock 12013, 2.062" C/L