

2023 Product Catalog



VISION[®]
H A R D W A R E
Consistently Reliable

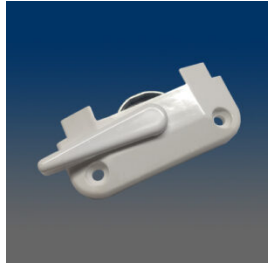
**We Have Thousands of SKUs
and Unlimited Ways to Improve Your Products**

(800) 220-4756 • www.visionhardware.com

These products may be protected by one or more Vision patents.
Patent information can be obtained at www.visionhardware.com/patents

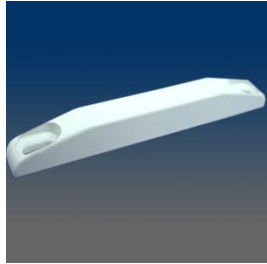
CLEARANCE

Limited quantities and special pricing on locks, keepers, screen hardware, and more!



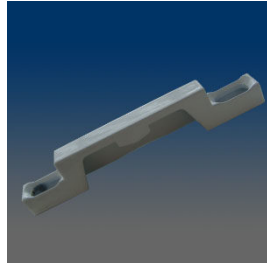
97301.005

Sash lock, surface mount, 2.062" C/L, .688" set back, #6 screw



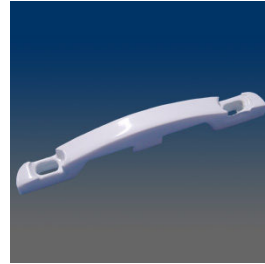
9382

Keeper, sash, surface mount, #6 screw, 2.25" C/L, closed back, material: zinc alloy, match with 9280 lock



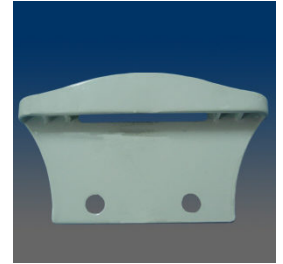
9381

Top Mount Keeper, 2.25" C/L



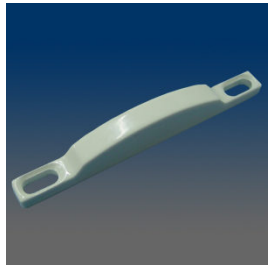
9356A

Keeper, sash, surface mount, for non-hooded 600 series hooded lock, #6 screw, 2.062" C/L, closed back, material: zinc alloy



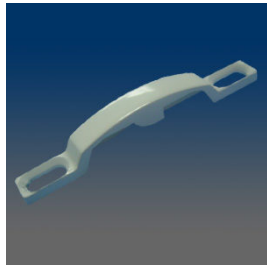
9354

Keeper, sash, face mount, for 600 series non-hooded lock, #8 screw, 1" C/L, material: zinc alloy



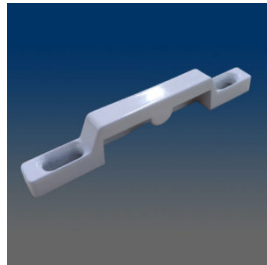
9352

Keeper, sash, recessed surface mount, for 600 series hooded lock, 2.062" C/L, # 6 screw-base and #4 screw-head, material: zinc alloy



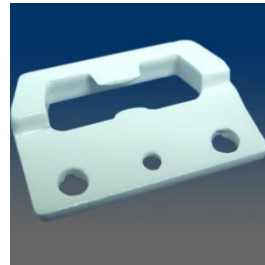
9350

Keeper, sash, recessed surface mount, for 600 series hooded lock, #8 screw, 2.079" C/L, material: zinc alloy



9346

Keeper, sash, surface mount, #6 screw, 2.085" C/L, closed back, material: zinc alloy



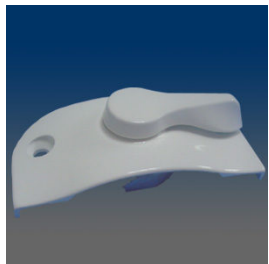
9317

Face mount keeper, 1" C/L



9206R.WH.BLUE

Keeper



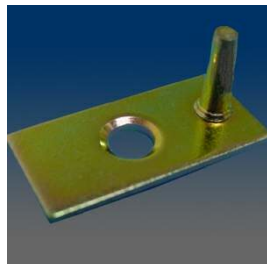
610

Sash lock, surface mount, 2.062" C/L, .438" set back, #8 screw, hooded, FER compliant, 600 series, FER= Forced Entry Resistance



50552

Die-cast moving pulley system, metal housing+plastic wheel



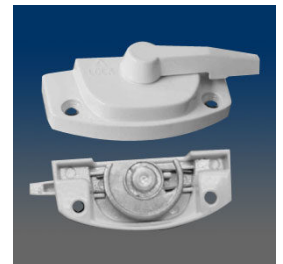
466031A

Sash pivot plate



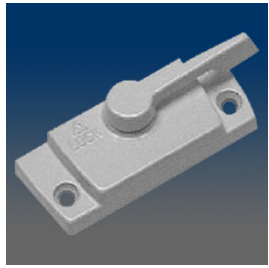
4540.003

Composite keeper, surface mount, match with 31911 lock



3225DB

Sash lock, surface mount, 1.875" C/L, .688" setback, #6 screw, snap-back lock, unique spring design eliminates exposing the cam in the partially open position



3222

Sash lock, surface mount, 2.062" C/L, .688" setback, #6 screw



3206CRD

Sash lock, surface mount, 1.875" C/L, .688" setback, #6 screw, step on housing



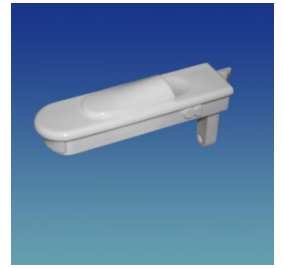
3198TR

Sweep lock, 3198 with pad marking "Traco"



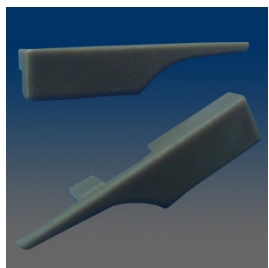
31606

Composite sweep lock, 2.25" C/L, .36" throw, .43" setback, squared housing, tongue without ribs, with glossy finish, with ribs on the lever



2693EB-LR

Tilt latch, flush mount, elliptical button, tongue offset "B", special round ended housing with screw locator, matte finish, available in left and right handed



2262-LR

sill insert end cap, handed



1972

Based on 1962 revised the opening: from 6.7mm to 5.1mm



1963

Screen crossbar clip, plastic



19541.210

Hole plug, plastic, with extended ribs



19541.101

Hole plug, plastic, with extended ribs



19541

Hole plug, plastic, with extended ribs



1954.103

HOLE PLUG



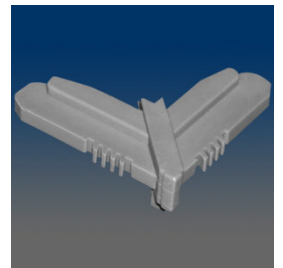
1088

Screen plunger, aluminum shaft assembled with spring



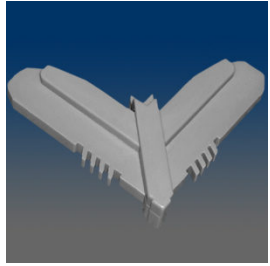
1056

Screen corner, zinc, internal, with dimples, mill finish



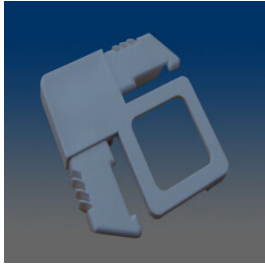
10385-30GF

Screen corner, plastic, external, miter, stop, .22 x .46" leg, match with 10375, having two material: PA6, PA6+30%GF



10375-30GF

Screen corner, plastic, external, miter, .22 x .32" leg, match with 10385, having two material: PA6, PA6+30%GF



10353

Screen corner, plastic, non-handed, external



10273

Screen plunger lever assembly, with aluminum pole width .220" and length .962", three components packed in separate bags and put in one carton