

2023 Product Catalog



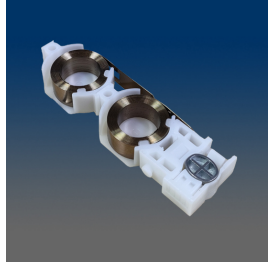
VISION[®]
HARDWARE
Consistently Reliable

**We Have Thousands of SKUs
and Unlimited Ways to Improve Your Products**

(800) 220-4756 • www.visionhardware.com

These products may be protected by one or more Vision patents.
Patent information can be obtained at www.visionhardware.com/patents

BALANCES



CFTXXDV-L & R

balance assembly



CFBB006-LR

installation clip



CF4004QC

Constant Force Balance System,
Quadruple Coil assembly

Available starting at 31 lbs to
40 lbs



CF3004TC

Constant force Balance System,
Triple coil assembly

Available starting at 21 lbs to
30 lbs



CF2004DC

Constant Force Balance System,
Double coil assembly

Available starting at 11 lbs to
20 lbs



CF1004SC

Constant Force Balance System,
Single coil assembly

Available starting at 3 lbs to 10
lbs



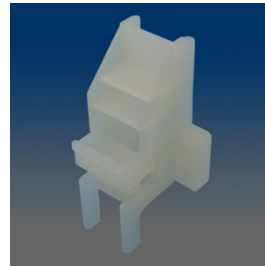
60602

Inverted balance terminal clip,
"S"-shaped, metal



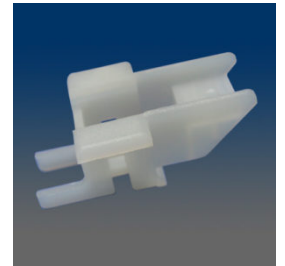
60601

Inverted balance terminal clip,
"L"-shaped, metal



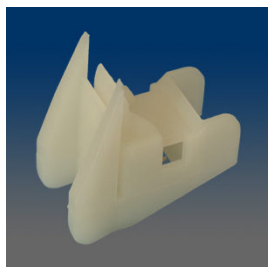
50721

TOP GUIDE



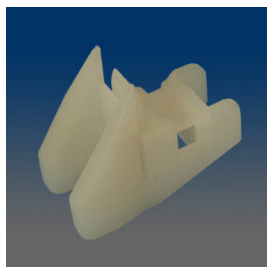
50720A

Top guide, plastic



50718

BOTTOM GUIDE



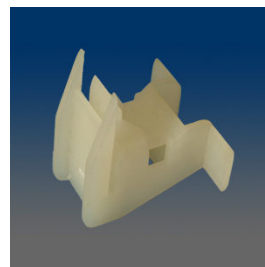
50714

BOTTOM GUIDE



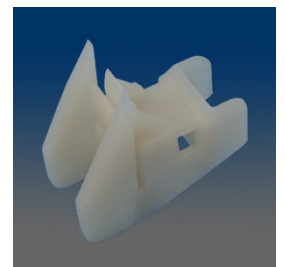
50621

Bottom guide, plastic



50620

Bottom guide, plastic



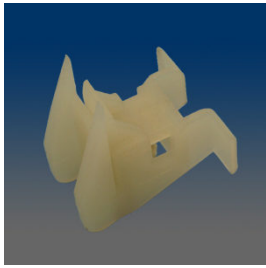
50617

BOTTOM GUIDE



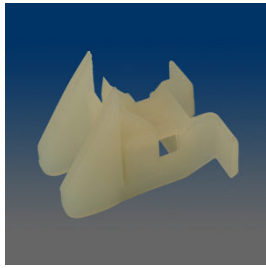
50616

BOTTOM GUIDE



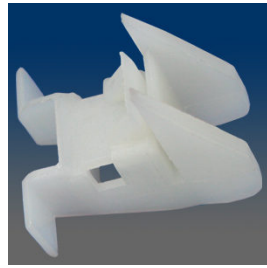
50615

BOTTOM GUIDE



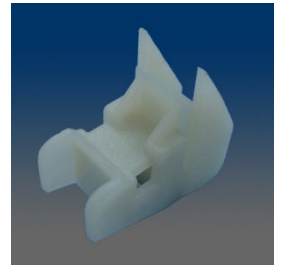
50613

Bottom guide, plastic



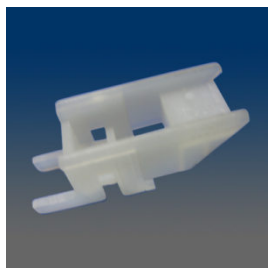
50611

Bottom guide, plastic



50609

Bottom guide, plastic



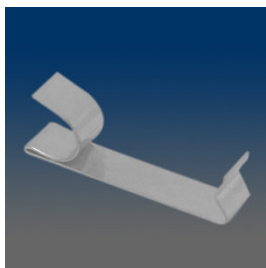
50603A

Top guide, plastic



50552

Die-cast moving pulley system, metal housing+plastic wheel



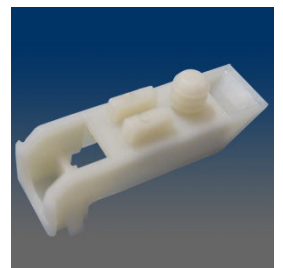
50522

Take-out clip, metal



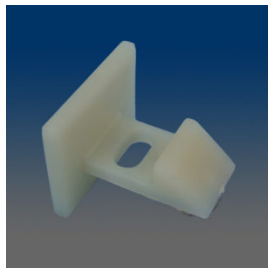
50401

Tilt balance spacer, TB component, plastic



50210

Sash cam, plastic



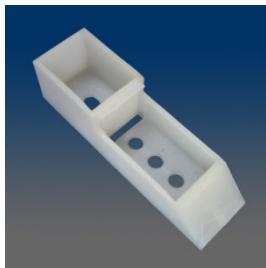
50208

Sash cam, plastic



50205

Sash cam, plastic



50204

Sash cam, plastic



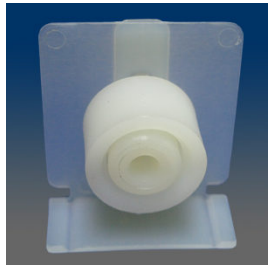
2999

Balance shoe, for 5/8" channel, short



2998

Balance shoe, for 5/8" channel, long



2995

Spring holder, nylon



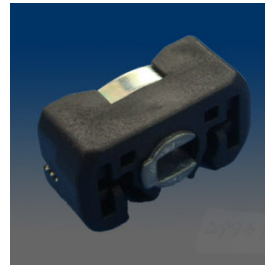
2994

Balance Shoe



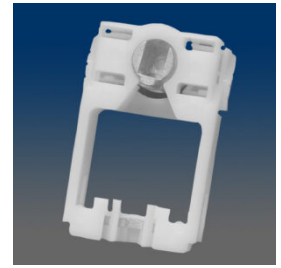
29932

Balance shoe, inverted, for 5/8" channel, plastic brake pad



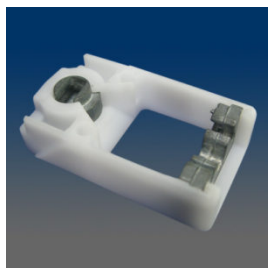
29931

Balance shoe, inverted, for 5/8" channel, metal brake pad



2989

Balance shoe, for 5/8" channel



2988

Balance shoe, for 5/8" channel, drop-in and lock



2986C

Balance shoe, for 5/8" channel, drop-in and lock, stretch block is PA6 + fiberglass



2986A

Balance shoe, for 5/8" channel, drop-in and lock, stretch block is POM



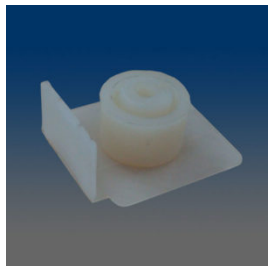
2985

Balance shoe, for 5/8" channel, rack-in



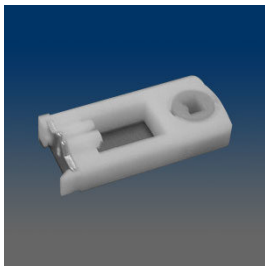
2982

Balance shoe, for 5/8" channel, steel tooth block



2980

Coil Spring Carrier



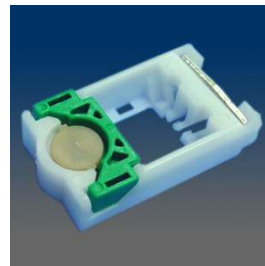
2971A

Balance shoe, for 5/8" channel



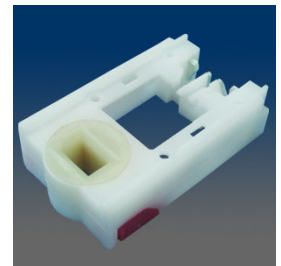
2970

Balance shoe, for 3/8" channel



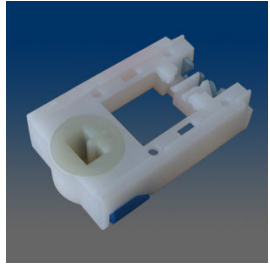
2931

Balance shoe, for 5/8" channel, green pusher

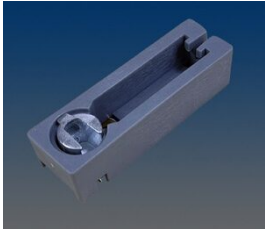


2922

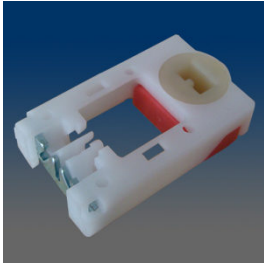
Balance shoe, for 5/8" channel, red brake pad, squared hole in cam, matched w/ SS bar 6937



2921
Balance shoe, for 5/8" channel,
blue pusher



2913
Jamb liner balance shoe



2911
Balance shoe, for 5/8" channel,
red pusher